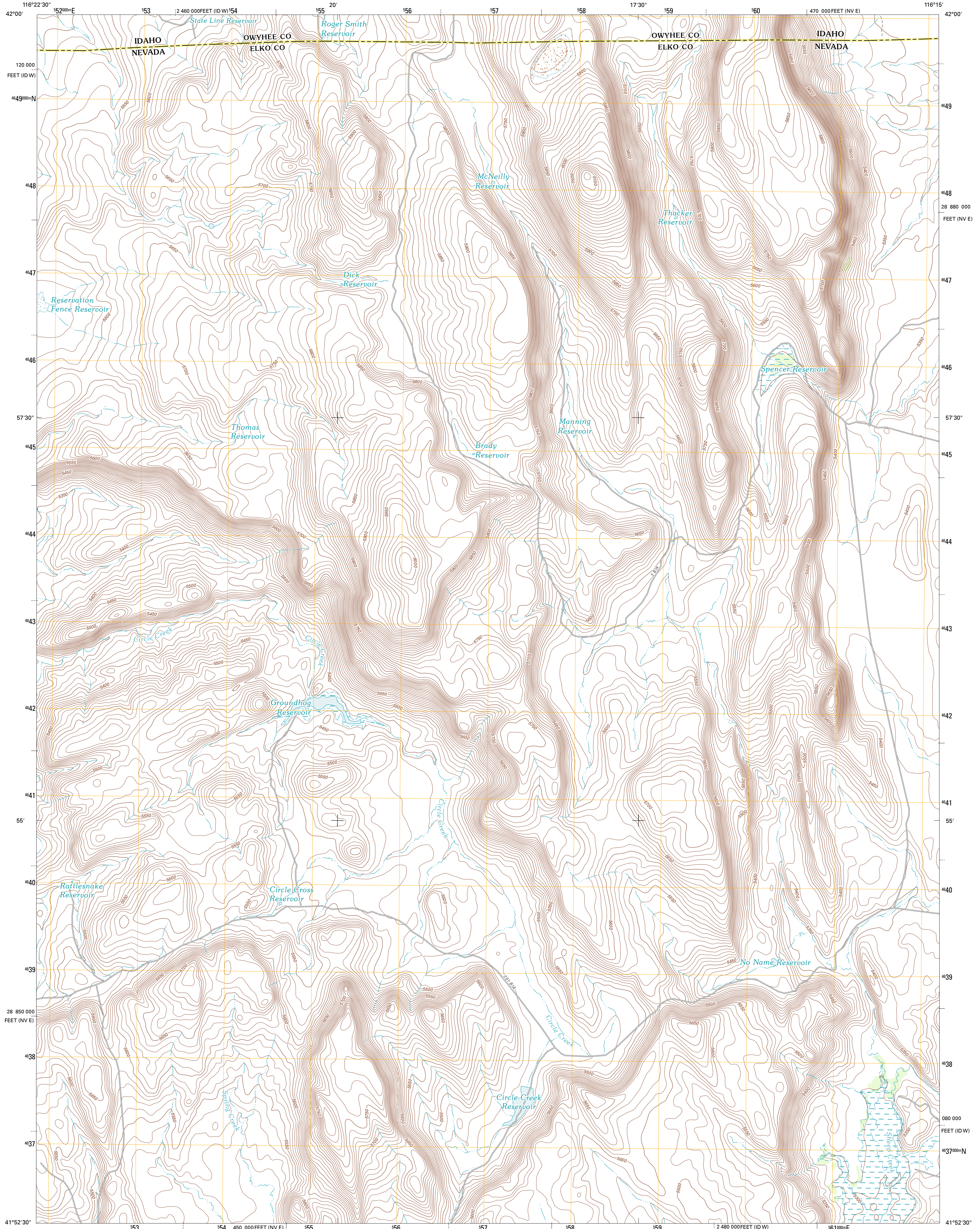




U.S. DEPARTMENT OF THE INTERIOR  
U. S. GEOLOGICAL SURVEY

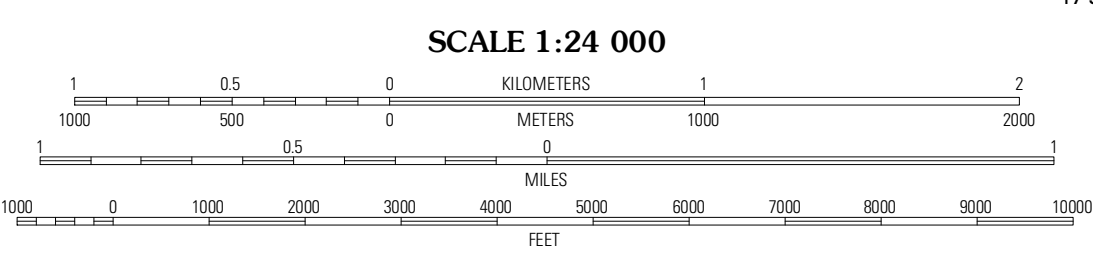
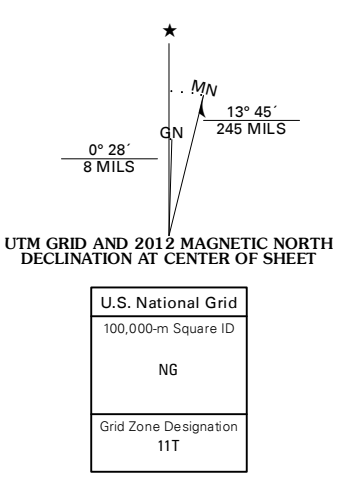


GROUNDHOG RESERVOIR QUADRANGLE  
NEVADA-IDAHO  
7.5-MINUTE SERIES



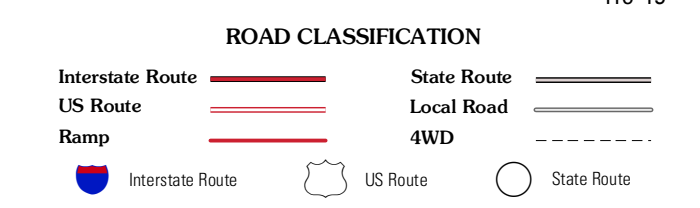
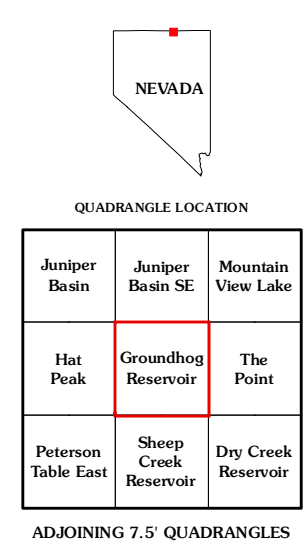
Produced by the United States Geological Survey  
North American Datum of 1983 (NAD83)  
World Geodetic System of 1984 (WGS84). Projection and  
1 000-meter grid: Universal Transverse Mercator, Zone 11T  
10 000-foot ticks: Nevada Coordinate System of 1983 (east  
zone), Idaho Coordinate System of 1983 (west zone)

Imagery.....NAP, July 2010  
Roads.....©2006-2011 TomTom  
Names.....GNS, 2011  
Hydrography.....National Hydrography Dataset, 2010  
Contours.....National Elevation Dataset, 2002  
Boundaries.....Census, IBWC, IBC, USGS, 1972 - 2010



CONTOUR INTERVAL 10 FEET  
NORTH AMERICAN VERTICAL DATUM OF 1988

This map was produced to conform with the  
National Geospatial Program US Topo Product Standard, 2011.  
A metadata file associated with this product is draft version 0.6.1



ADJOINING 7.5' QUADRANGLES

Juniper Basin	Juniper Basin SE	Mountain View Lake
Hat Peak	Groundhog Reservoir	The Point
Peterson Table East	Sheep Creek Reservoir	Dry Creek Reservoir

GROUNDHOG RESERVOIR, NV-ID  
2012