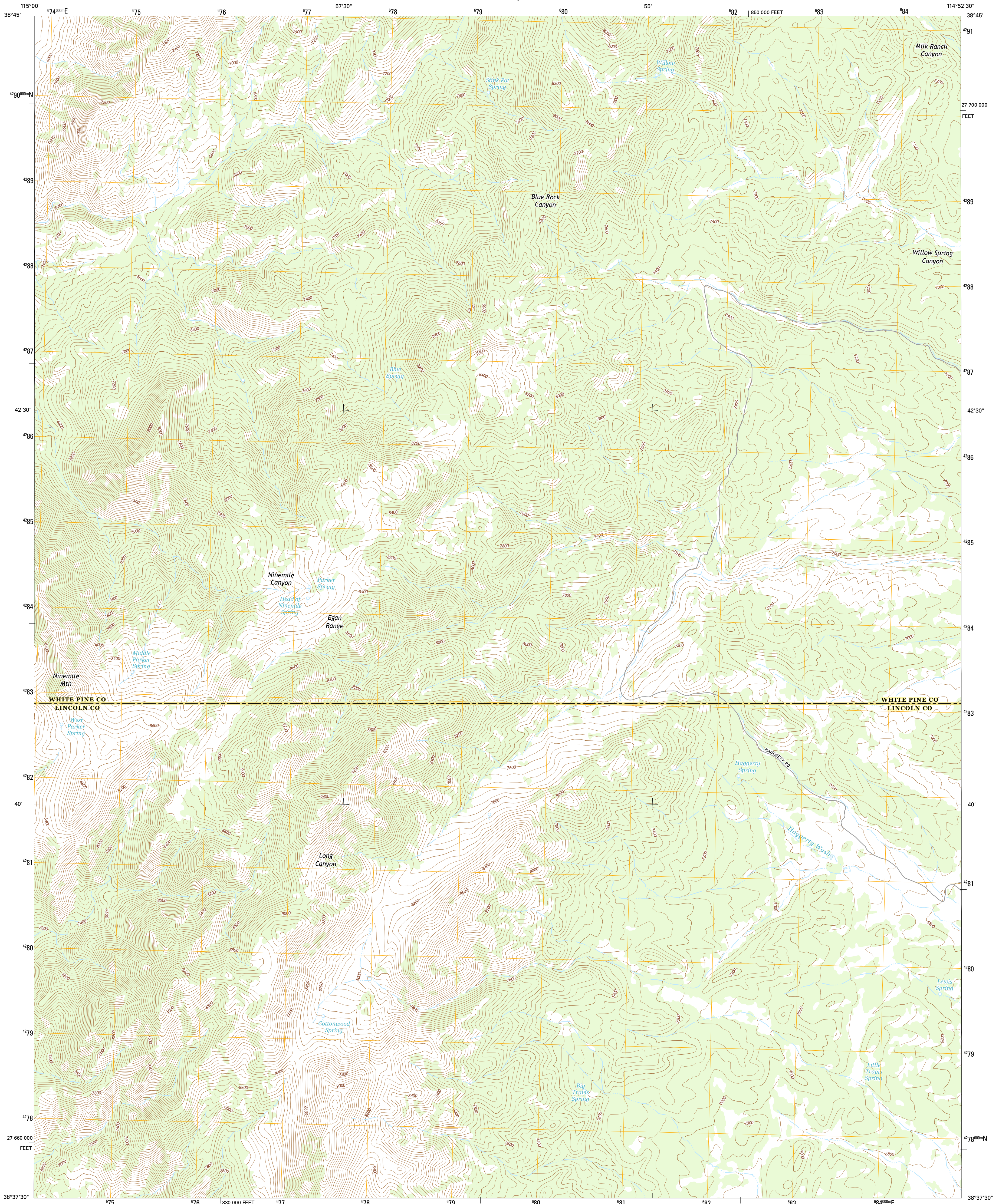




U.S. DEPARTMENT OF THE INTERIOR
U.S. GEOLOGICAL SURVEY



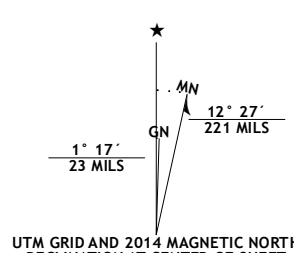
HAGGERTY SPRING QUADRANGLE
NEVADA
7.5-MINUTE SERIES



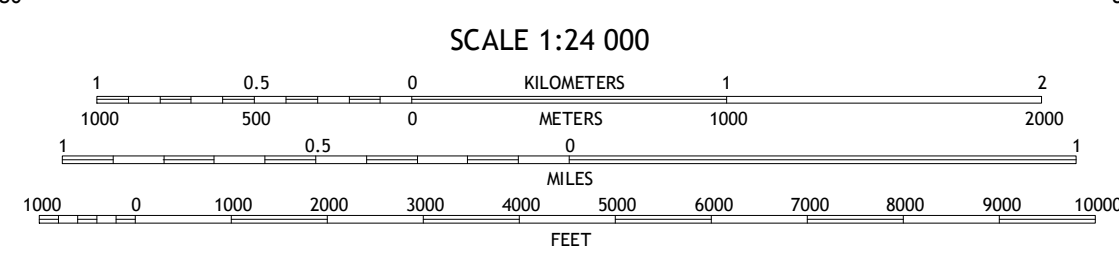
Produced by the United States Geological Survey
North American Datum of 1983 (NAD83)
World Geodetic System of 1984 (WGS84). Projection and
1 000-meter grid: Universal Transverse Mercator, Zone 11S
10 000-foot ticks: Nevada Coordinate System of 1983 (east zone)

This map is not a legal document. Boundaries may be
generalized for this map scale. Private lands within government
reservations may not be shown. Obtain permission before
entering private lands.

Imagery.....NAIP, August 2013 - September 2013
Roads.....HERE, ©2013
Names.....GNIS, 2013
Hydrography.....National Hydrography Dataset, 2013
Contours.....National Elevation Dataset, 2004
Boundaries.....Multiple sources; see metadata file 1972 - 2014
Public Land Survey System.....BLM, 2011



| |
|-----------------------|
| U.S. National Grid |
| 100,000-ft Square ID |
| PC |
| Grid Zone Designation |
| 11S |



QUADRANGLE LOCATION

| ROAD CLASSIFICATION | |
|---------------------|-----------------|
| Expressway | Local Connector |
| Secondary Hwy | Local Road |
| Ramp | 4WD |
| Interstate Route | US Route |
| | State Route |

| | | | |
|---|---|---|---------------------|
| 1 | 2 | 3 | 1 Lund |
| 4 | 5 | 6 | 2 Brown Knoll |
| 7 | 8 | 9 | 3 Buttnack Summit |
| | | | 4 Hardy Springs |
| | | | 5 Parker Station |
| | | | 6 Moorman Spring SE |
| | | | 7 Shingle Pass |
| | | | 8 Shingle Pass SE |

HAGGERTY SPRING, NV
2014



NSN REF NO. 1-50502-2418-0