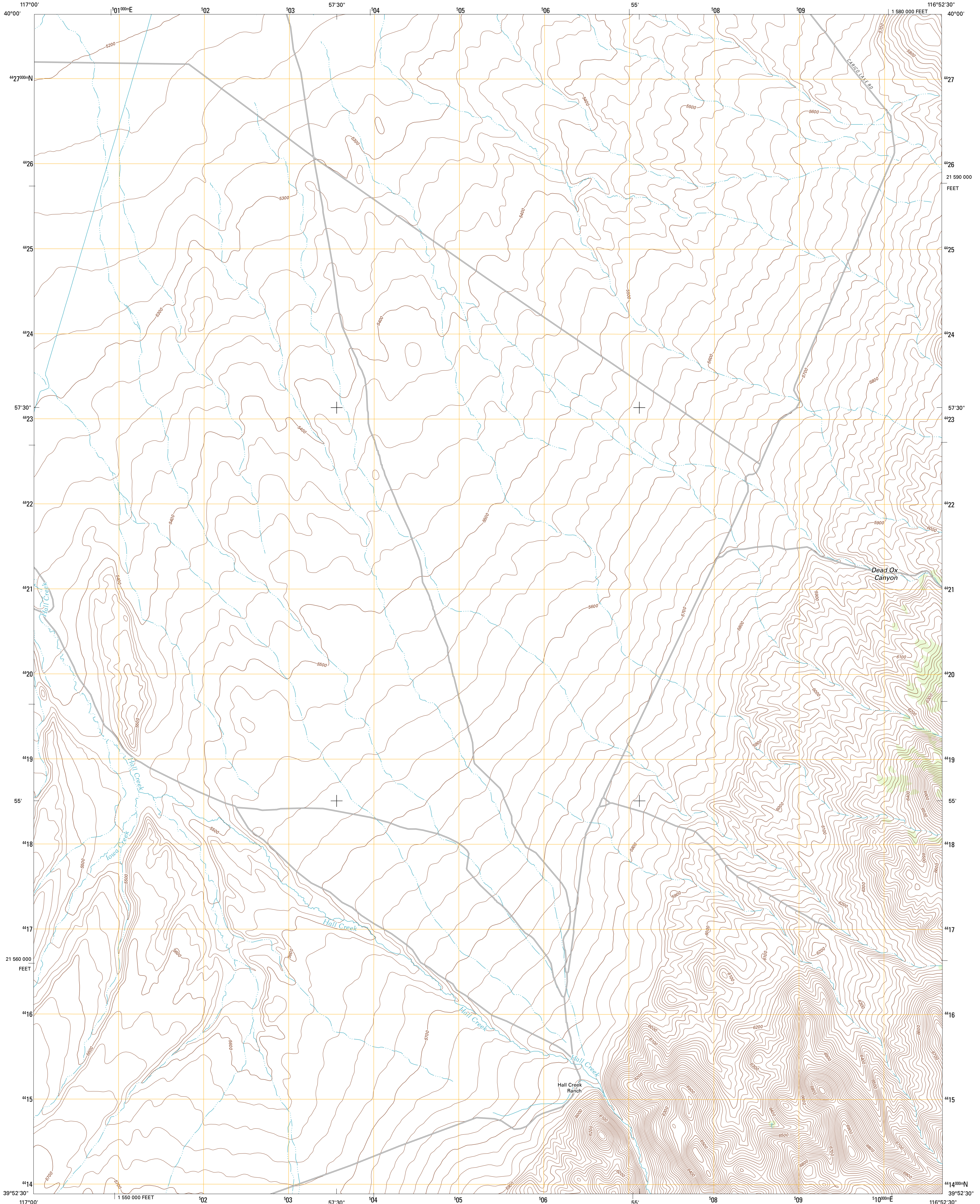




U.S. DEPARTMENT OF THE INTERIOR
U. S. GEOLOGICAL SURVEY

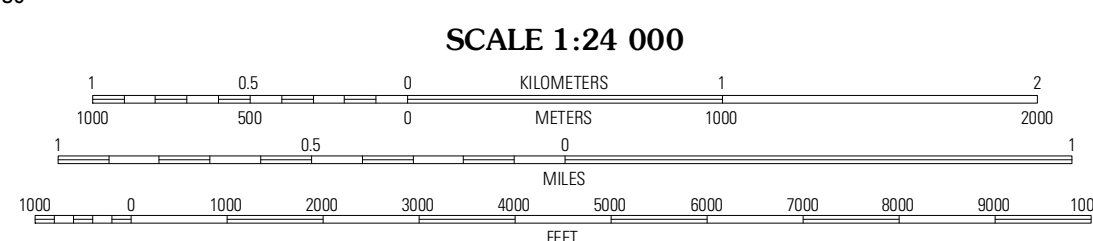
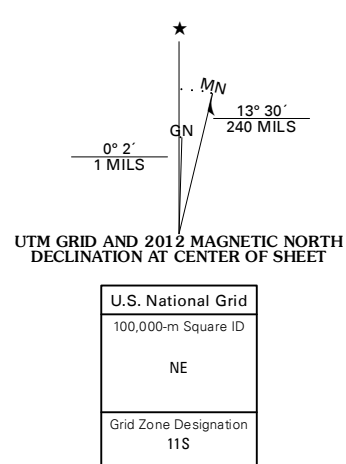


HALL CREEK NORTH QUADRANGLE
NEVADA-LANDER CO.
7.5-MINUTE SERIES



Produced by the United States Geological Survey
North American Datum of 1983 (NAD83)
World Geodetic System of 1984 (WGS84). Projection and
1 000-meter grid: Universal Transverse Mercator, Zone 11S
10 000-foot ticks: Nevada Coordinate System of 1983
(central zone)

Imagery.....N.A.I.P., June 2010
Roads.....©2006-2011 TomTom
Names.....©2011
Hydrography.....National Hydrography Dataset, 2010
Contours.....National Elevation Dataset, 1999
Boundaries.....Census, IBWC, IBC, USGS, 1972 - 2010



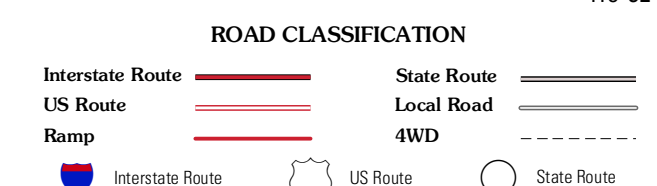
CONTOUR INTERVAL 20 FEET
NORTH AMERICAN VERTICAL DATUM OF 1988
This map was produced to conform with the
National Geospatial Program US Topo Product Standard, 2011.
A metadata file associated with this product is draft version 0.6.1



QUADRANGLE LOCATION

The Cedars	Carico Lake South	Wood Spring Canyon
Manhattan Mountain NE	Hall Creek North	Corral Canyon
Joe Eason Mountain	Hall Creek South	Cowboy Rest Creek

ADJOINING 7.5 QUADRANGLES



HALL CREEK NORTH, NV
2012