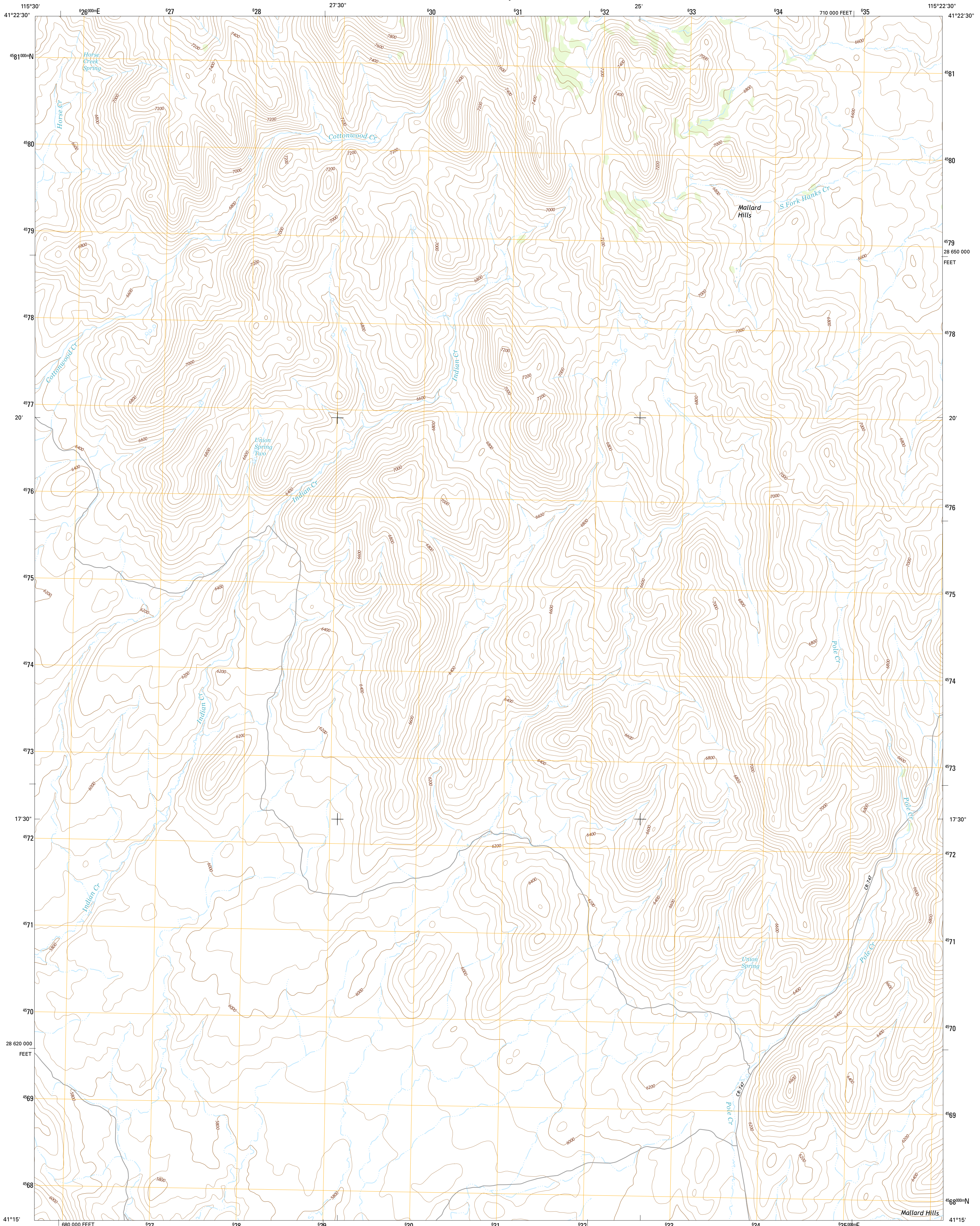




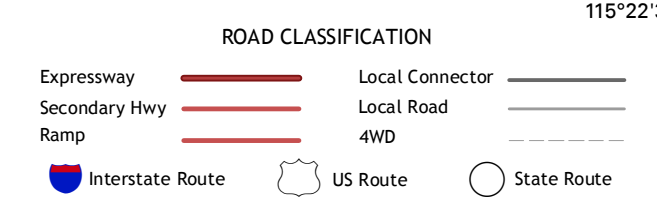
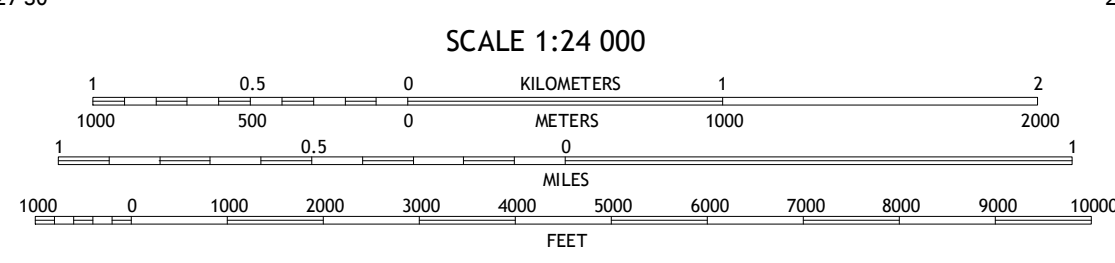
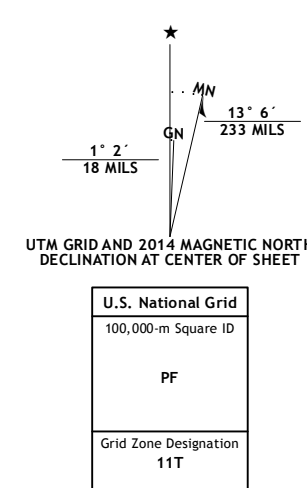
U.S. DEPARTMENT OF THE INTERIOR  
U.S. GEOLOGICAL SURVEY



HANKS CREEK SW QUADRANGLE  
NEVADA-ELKO CO.  
7.5-MINUTE SERIES



Produced by the United States Geological Survey  
North American Datum of 1983 (NAD83)  
World Geodetic System of 1984 (WGS84), Projection and  
1000-meter grid; Universal Transverse Mercator, Zone 11T  
10 000-foot ticks; Nevada Coordinate System of 1983 (east zone)  
This map is not a legal document. Boundaries may be  
generalized for this map scale. Private lands within government  
reservations may not be shown. Obtain permission before  
entering private lands.  
Imagery.....N.A.I.P., August 2013  
Roads.....HERE, ©2013  
Names.....GNIS, 2013  
Hydrography.....National Hydrography Dataset, 2013  
Contours.....National Elevation Dataset, 1999  
Boundaries.....Multiple sources; see metadata file 1972 - 2014  
Public Land Survey System.....BLM, 2011



1	2	3
4	5	6
7	8	

ADJOINING QUADRANGLES

- 1 Devils Armchair
- 2 Stag Mountain
- 3 Hanks Creek NE
- 4 Double Mountain SE
- 5 Hot Springs Creek
- 6 The Narrows
- 7 Peck Peak
- 8 Twin Buttes

HANKS CREEK SW, NV  
2014

