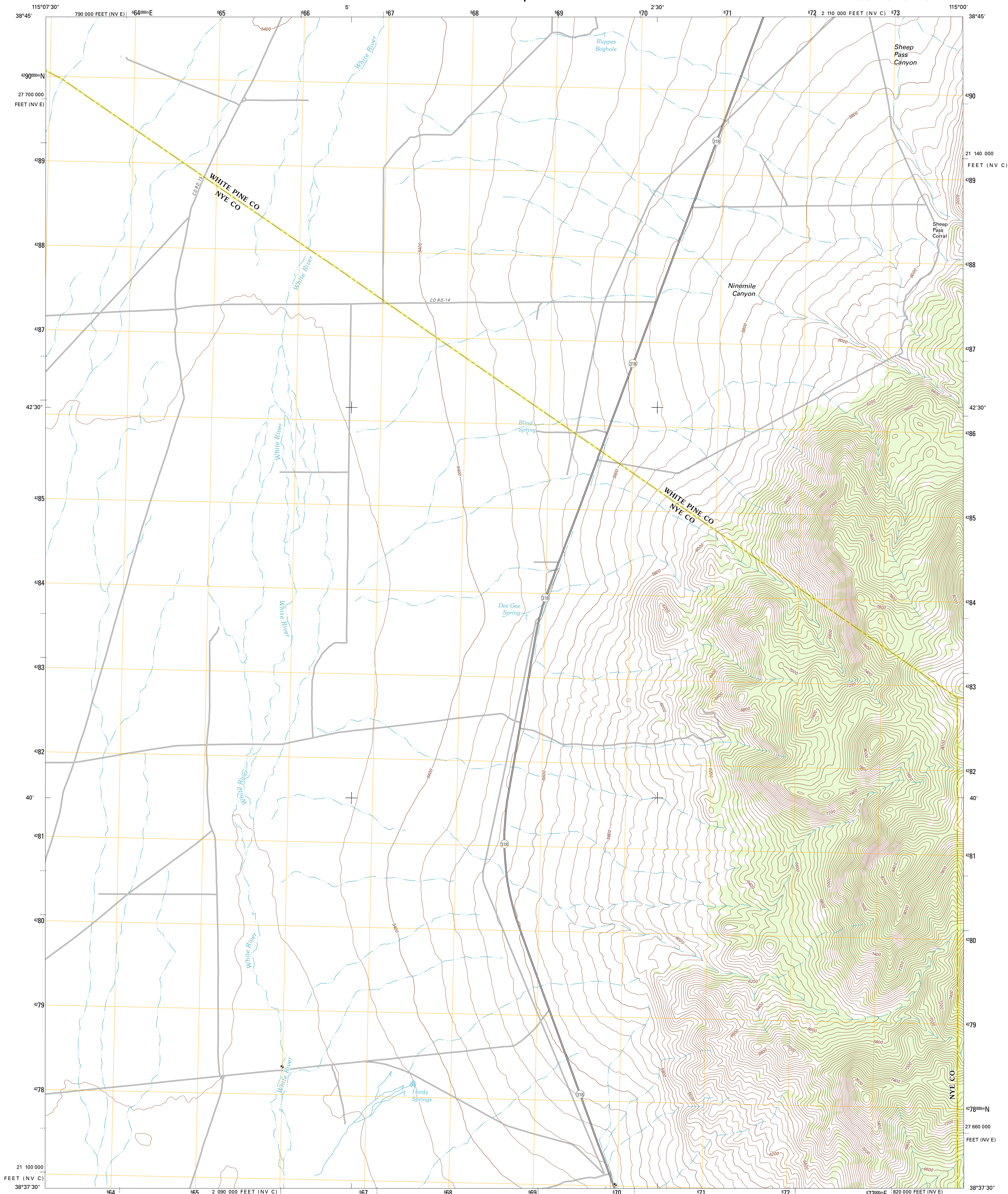




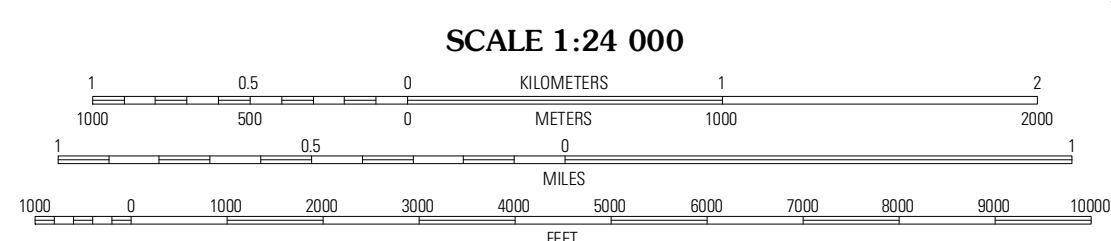
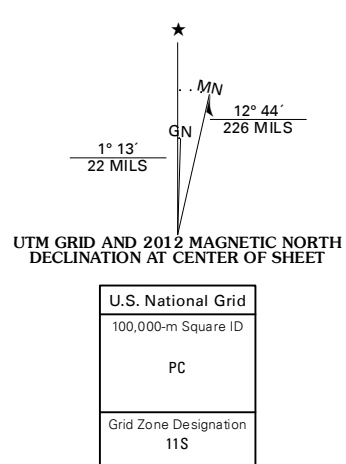
U.S. DEPARTMENT OF THE INTERIOR
U. S. GEOLOGICAL SURVEY



HARDY SPRINGS QUADRANGLE
NEVADA
7.5-MINUTE SERIES

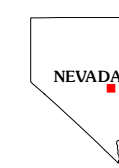


Produced by the United States Geological Survey
North American Datum of 1983 (NAD83)
World Geodetic System of 1984 (WGS84). Projection and
1 000-meter grid: Universal Transverse Mercator, Zone 11S
10 000-foot ticks: Nevada Coordinate System of 1983
(central and east zones)



CONTOUR INTERVAL 40 FEET
NORTH AMERICAN VERTICAL DATUM OF 1988

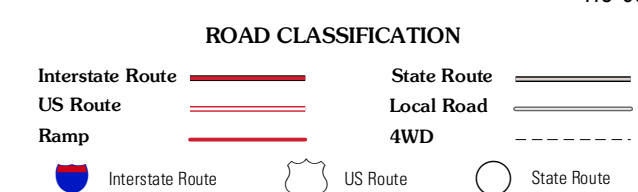
This map was produced to conform with the
National Geospatial Program US Topo Product Standard, 2011.
A metadata file associated with this product is draft version 0.6.1



QUADRANGLE LOCATION

Douglas	Lund	Brown Knoll
Moorman Spring NW	Hardy Springs	Haggerty Spring
Moorman Spring	Moorman Spring SE	Shingle Pass

ADJOINING 7.5 QUADRANGLES



HARDY SPRINGS, NV
2012