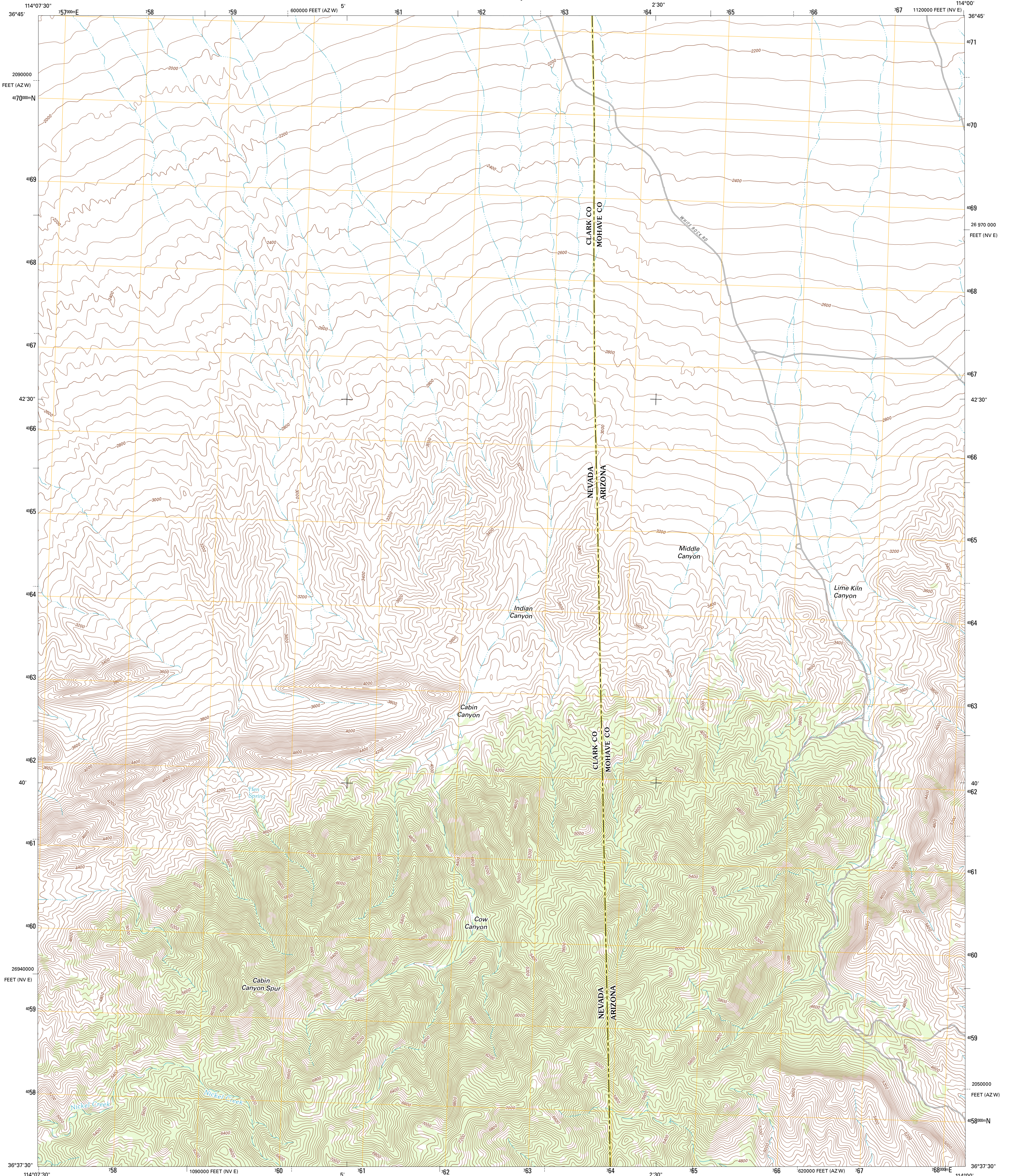




U.S. DEPARTMENT OF THE INTERIOR  
U. S. GEOLOGICAL SURVEY

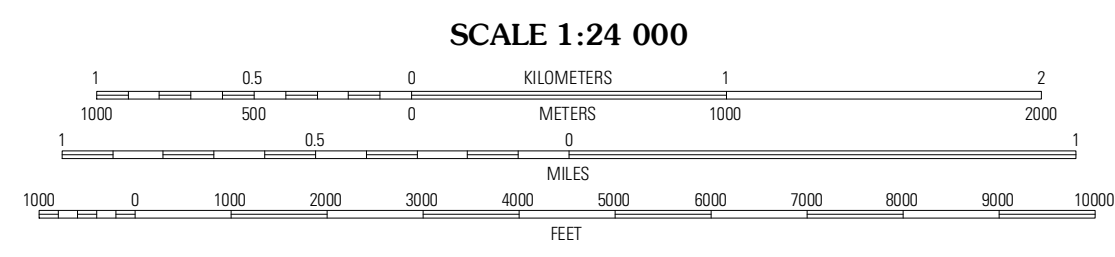
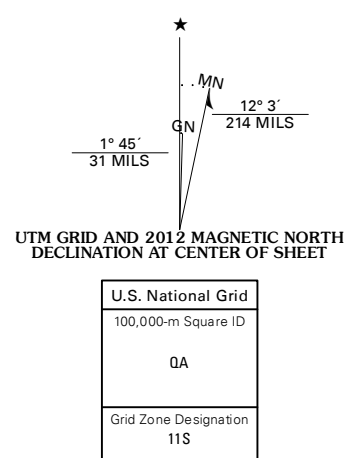


HEN SPRING QUADRANGLE  
NEVADA-ARIZONA  
7.5-MINUTE SERIES



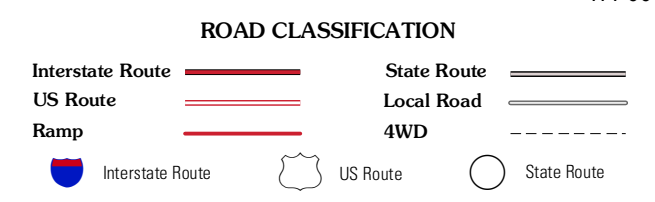
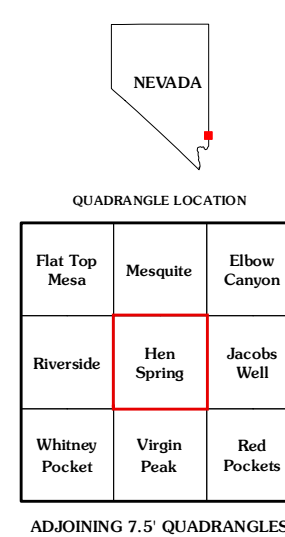
Produced by the United States Geological Survey  
North American Datum of 1983 (NAD83)  
World Geodetic System of 1984 (WGS84) Projection and  
1 000-meter grid: Universal Transverse Mercator, Zone 11S  
10 000-foot ticks: Nevada Coordinate System of 1983 (east zone), Arizona Coordinate System of 1983 (west zone)

Imagery:.....NAP, May 2010  
Roads:.....©2006-2011 TomTom  
Names:.....©2006-2011 TomTom  
Hydrography:.....National Hydrography Dataset, 2010  
Contours:.....National Elevation Dataset, 2000  
Boundaries:.....Census, IBWC, IBC, USGS, 1972 - 2010



CONTOUR INTERVAL 40 FEET  
NORTH AMERICAN VERTICAL DATUM OF 1988

This map was produced to conform with the National Geospatial Program US Topo Product Standard, 2011. A metadata file associated with this product is draft version 0.6.1



HEN SPRING, NV-AZ  
2012