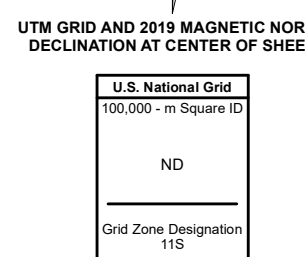
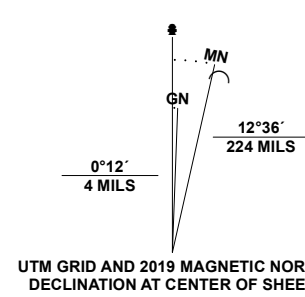


Produced by the United States Geological Survey

North American Datum of 1983 (NAD83)
World Geodetic System of 1984 (WGS84). Projection and
1 000-meter grid/Universal Transverse Mercator, Zone 11S
This map is not a legal document. Boundaries may be
generalized for this map scale. Private lands within government
reservations may not be shown. Obtain permission before
entering private lands.

Imagery.....NAIP, July 2017 - November 2017
Roads.....U.S. Census Bureau, 2018
Names.....GNIS, 1980 - 2021
Hydrography.....National Hydrography Dataset, 2006 - 2020
Contours.....National Elevation Dataset, 2004
Boundaries.....Multiple sources; see metadata file, 2019 - 2021
Public Land Survey System.....BLM, 2020
Wetlands.....FWS National Wetlands Inventory, Not Available



CONTOUR INTERVAL 40 FEET
NORTH AMERICAN VERTICAL DATUM OF 1988
This map was produced to conform with the
National Geospatial Program US Topo Product Standard.



1	2	3
4	5	6
7	8	

- 1 Bates Mountain
- 2 Ackerman Canyon
- 3 Bean Flat West
- 4 Cape Horn
- 5 Jackrabbit Spring
- 6 Spencer Hot Springs
- 7 Potts Well
- 8 Wallace Canyon

ROAD CLASSIFICATION	
	Expressway
	Secondary Hwy
	Ramp
	Interstate Route
	US Route
	State Route
	Local Connector
	Local Road
	4WD

HICKISON SUMMIT, NV

2021

