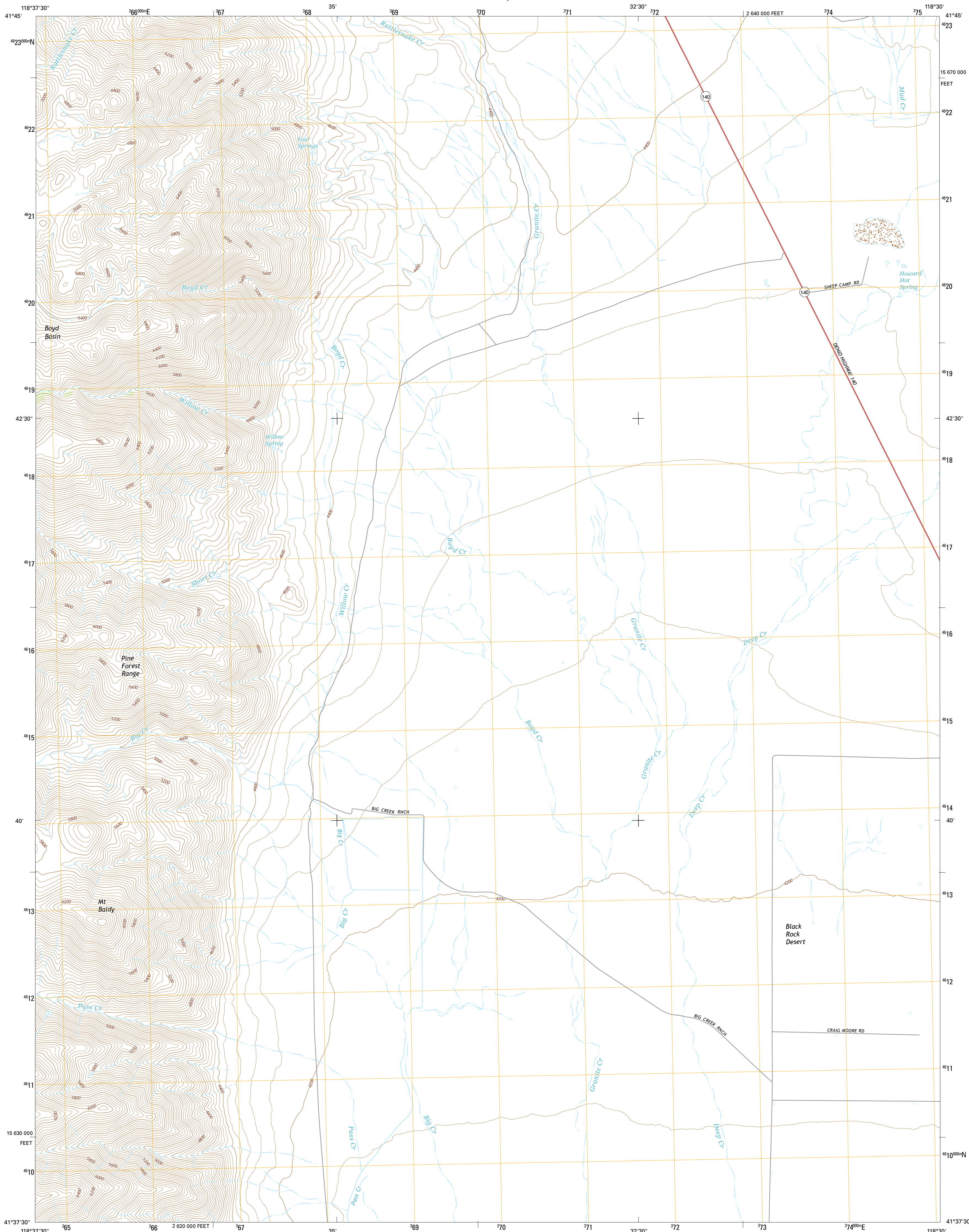




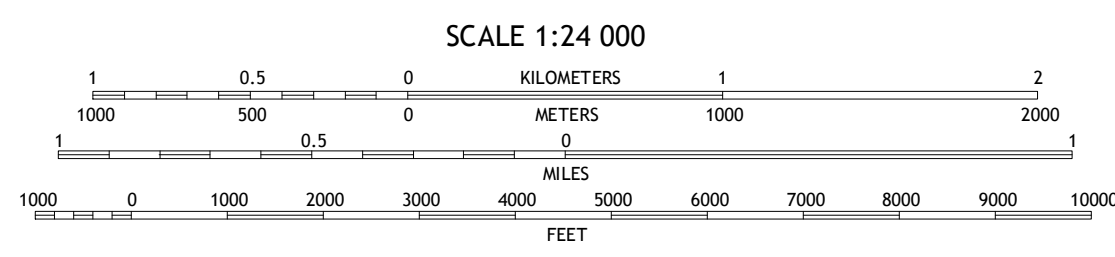
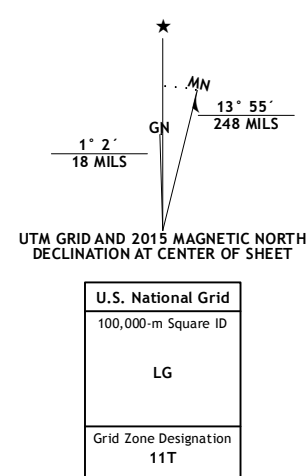
U.S. DEPARTMENT OF THE INTERIOR
U.S. GEOLOGICAL SURVEY



HOWARD HOT SPRING QUADRANGLE
NEVADA-HUMBOLDT CO.
7.5-MINUTE SERIES



Produced by the United States Geological Survey
North American Datum of 1983 (NAD83)
World Geodetic System of 1984 (WGS84), Projection and
1 000-meter grid: Universal Transverse Mercator, Zone 11T
10 000-foot ticks: Nevada Coordinate System of 1983 (west
zone)
This map is not a legal document. Boundaries may be
generalized for this map scale. Private lands within government
reservations may not be shown. Obtain permission before
entering private lands.
Imagery: NMAP, July 2013
Roads: HERE, ©2013
Names: GNIS, 2013
Hydrography: National Hydrography Dataset, 2013
Contours: National Elevation Dataset, 2001
Boundaries: Multiple sources; see metadata file 1972 - 2014
Public Land Survey System: BLM, 2011



ROAD CLASSIFICATION

Expressway	Local Connector
Secondary Hwy	Local Road
Ramp	4WD
Interstate Route	US Route
	State Route

1	2	3
4	5	6
7	8	9

1 Vicksburg Canyon
2 Denio Summit
3 Shyster Butte
4 Duffer Peak
5 Blilk Creek Reservoir
6 Bishop Peak
7 Dyer Canyon
8 Quinn River Crossing

HOWARD HOT SPRING, NV
2015

