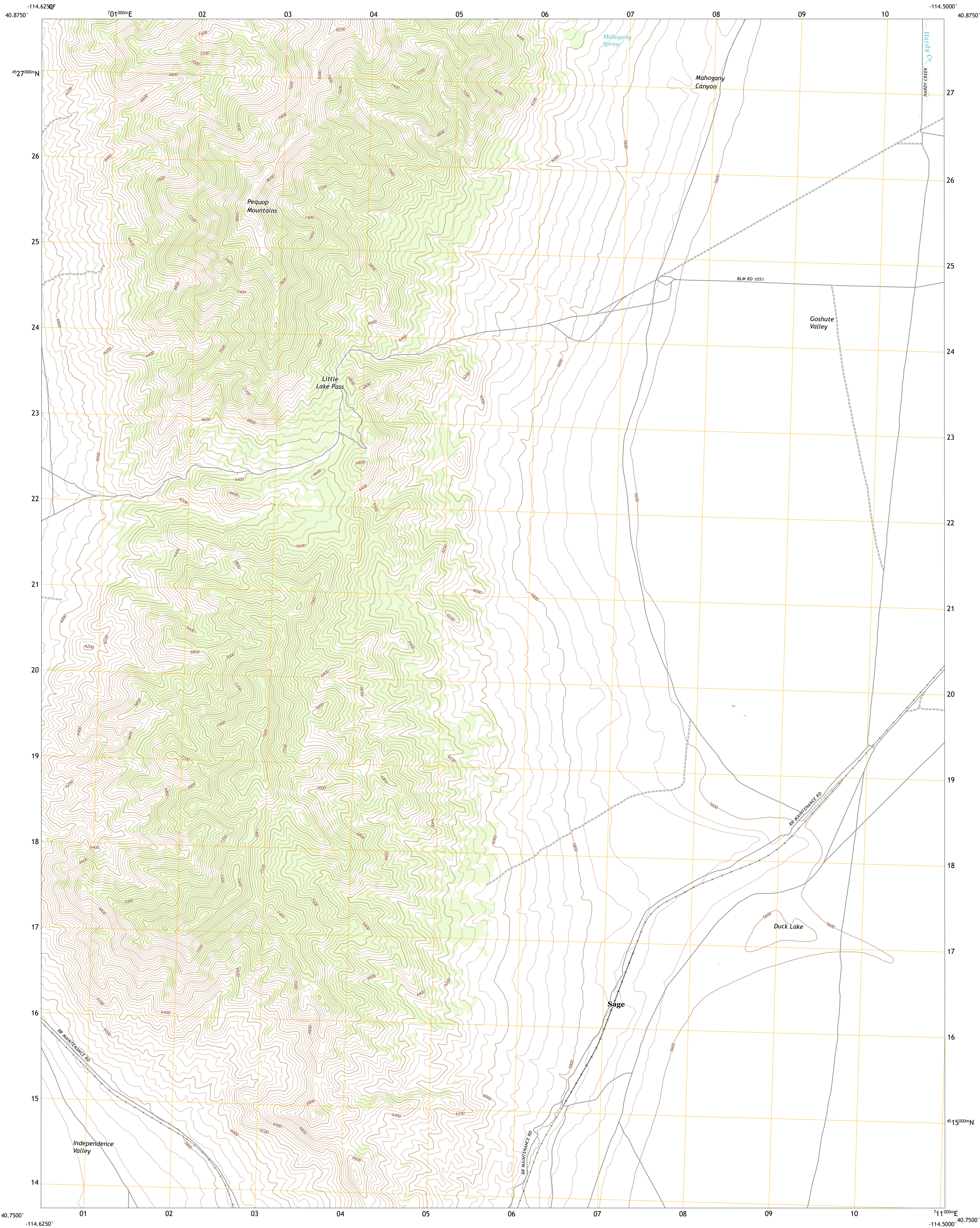




U.S. DEPARTMENT OF THE INTERIOR  
U.S. GEOLOGICAL SURVEY



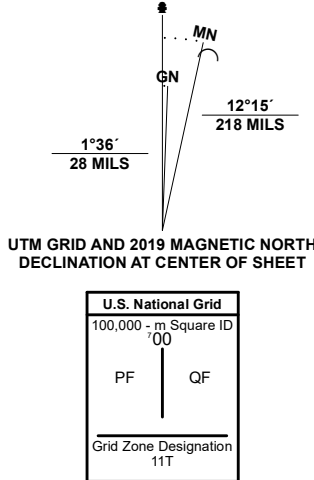
INDEPENDENCE VALLEY SE QUADRANGLE  
NEVADA - ELKO COUNTY  
7.5-MINUTE SERIES



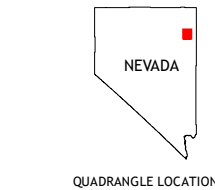
Produced by the United States Geological Survey

North American Datum of 1983 (NAD83)  
World Geodetic System of 1984 (WGS84). Projection and  
1 000-meter grid/Universal Transverse Mercator, Zone 11T  
This map is not a legal document. Boundaries may be  
generalized for this map scale. Private lands within government  
reservations may not be shown. Obtain permission before  
entering private lands.

Imagery.....NAIP, June 2017 - November 2017  
Roads.....U.S. Census Bureau, 2018  
Names.....GNIS, 1980 - 1990  
Hydrography.....National Hydrography Dataset, 2004 - 2019  
Contours.....National Elevation Dataset, 2002  
Boundaries.....Multiple sources: see metadata file, 2019 - 2021  
Public Land Survey System.....BLM, 2020  
Wetlands.....FWS National Wetlands Inventory, 2015



CONTOUR INTERVAL 40 FEET  
NORTH AMERICAN VERTICAL DATUM OF 1988  
This map was produced to conform with the  
National Geospatial Program US Topo Product Standard.



1	2	3
4	5	6
7	8	9

- 1 Independence Valley NW
- 2 Independence Valley NE
- 3 Hardy Creek
- 4 Independence Valley SW
- 5 Shafter
- 6 Ninemile Canyon
- 7 Flowery Lake
- 8 Decoy

ROAD CLASSIFICATION	
Expressway	Local Connector
Secondary Hwy	Local Road
Ramp	4WD
Interstate Route	US Route
	State Route

INDEPENDENCE VALLEY SE, NV

2021

