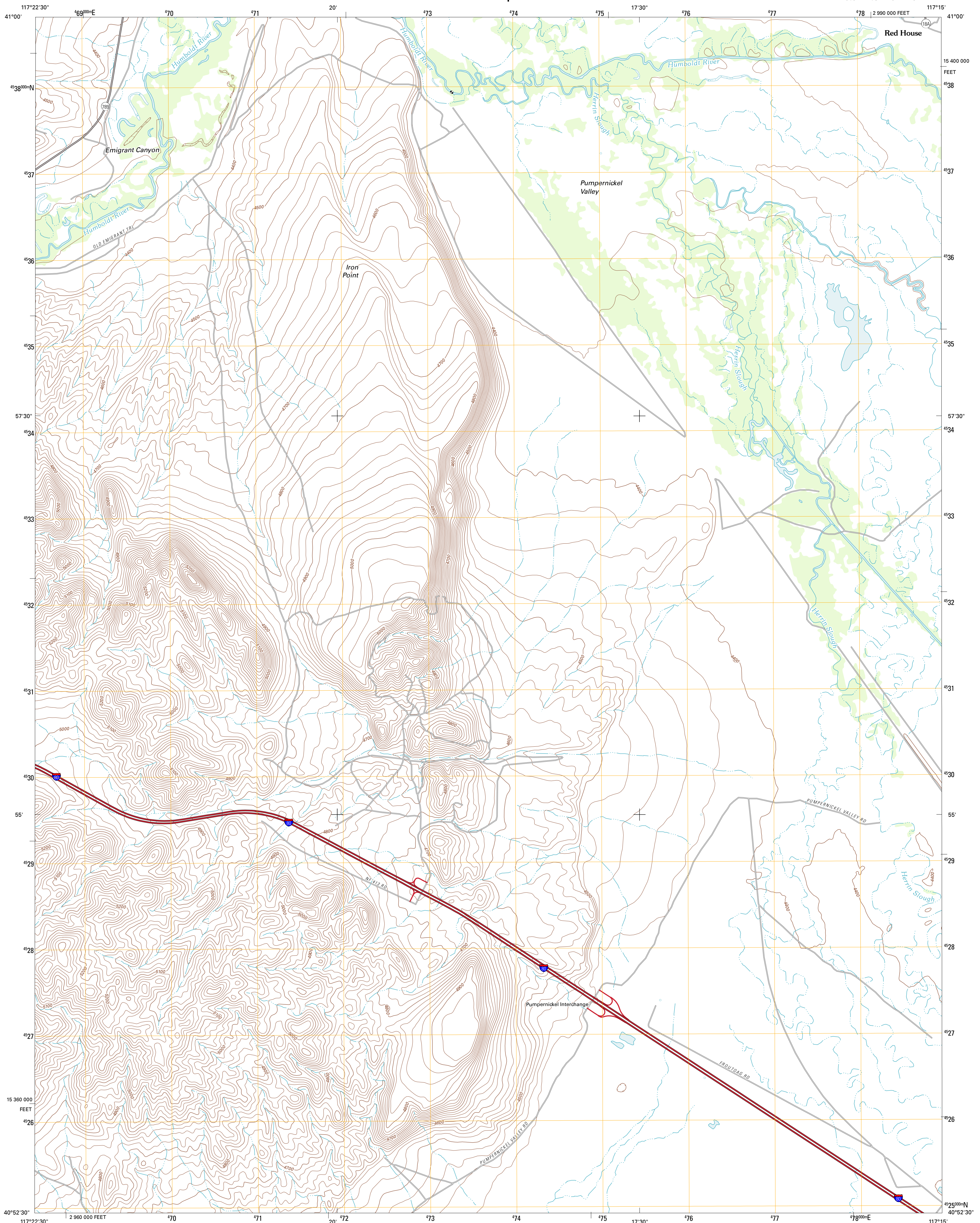




U.S. DEPARTMENT OF THE INTERIOR
U. S. GEOLOGICAL SURVEY

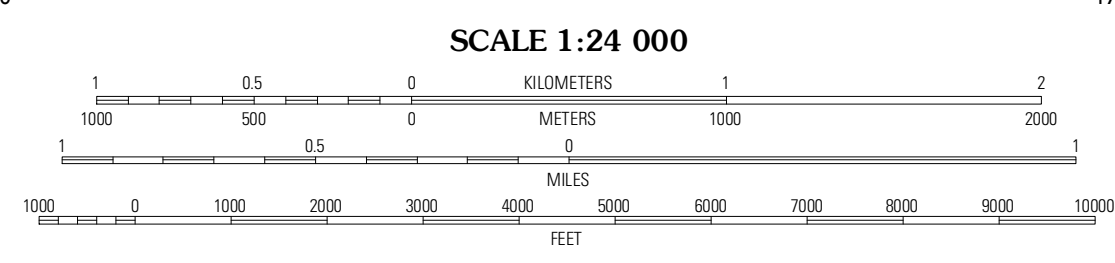
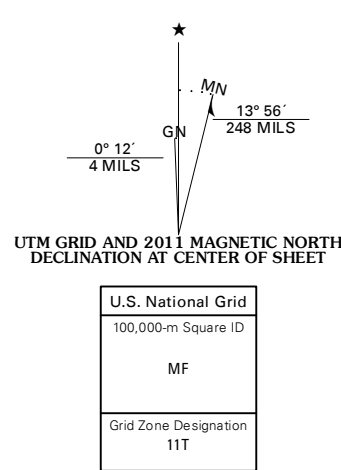


IRON POINT QUADRANGLE
NEVADA-HUMBOLDT CO.
7.5-MINUTE SERIES

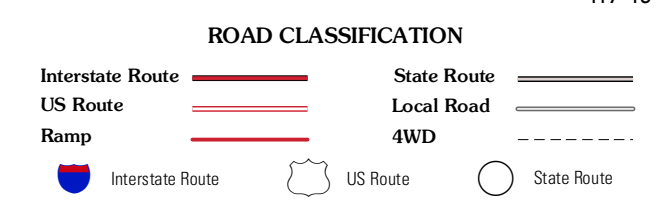


Produced by the United States Geological Survey
North American Datum of 1983 (NAD83)
World Geodetic System of 1984 (WGS84). Projection and
1 000-meter grid: Universal Transverse Mercator, Zone 11T
10 000-foot ticks: Nevada Coordinate System of 1983 (west zone)

Imagery.....NAIP, June 2010 - July 2010
Roads.....©2006-2011 TomTom
Names.....GNIS, 2011
Hydrography.....National Hydrography Dataset, 2010
Contours.....National Elevation Dataset, 1999
Boundaries.....Census, IBWC, BC, USGS, 1972 - 2010



CONTOUR INTERVAL 20 FEET
NORTH AMERICAN VERTICAL DATUM OF 1988
This map was produced to conform with the
National Geospatial Program US Topo Product Standard, 2011.
A metadata file associated with this product is draft version 0.6.1



QUADRANGLE LOCATION

Anderson Gardens	Red House Flat West	Red House Flat East
Goldconda	Iron Point	Knight
Goldrun Creek	Brooks Spring	Valmy

IRON POINT, NV
2011

ADJOINING 7.5 QUADRANGLES