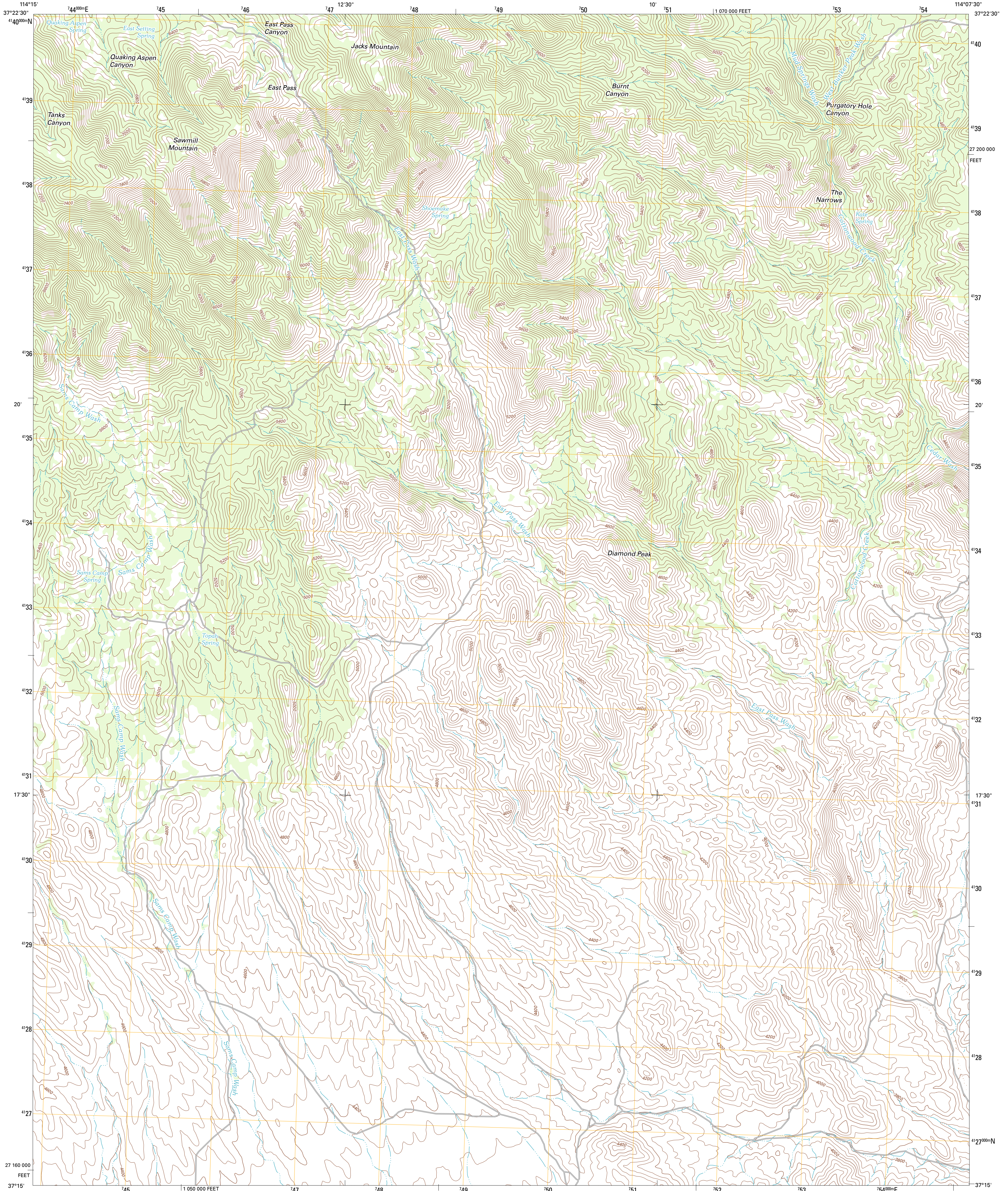




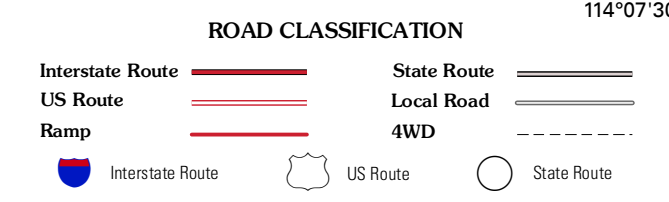
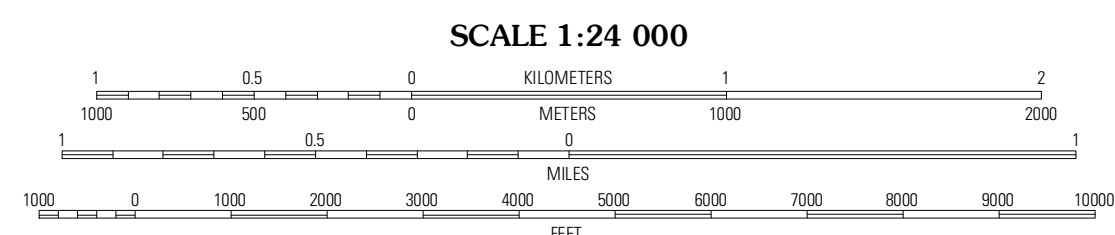
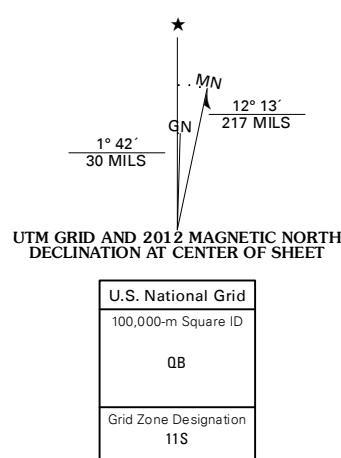
U.S. DEPARTMENT OF THE INTERIOR  
U. S. GEOLOGICAL SURVEY



JACKS MOUNTAIN QUADRANGLE  
NEVADA-LINCOLN CO.  
7.5-MINUTE SERIES



Produced by the United States Geological Survey  
North American Datum of 1983 (NAD83)  
World Geodetic System of 1984 (WGS84). Projection and  
1 000-meter grid: Universal Transverse Mercator, Zone 11S  
10 000-foot ticks: Nevada Coordinate System of 1983 (east  
zone)



QUADRANGLE LOCATION

File Mountain	Bunker Peak	Dees Pass
Garden Spring	Jacks Mountain	Dodge Spring
Blue Nose Peak	Lime Mountain	Scarecrow Peak

CONTOUR INTERVAL 40 FEET  
NORTH AMERICAN VERTICAL DATUM OF 1988

This map was produced to conform with the  
National Geospatial Program US Topo Product Standard, 2011.  
A metadata file associated with this product is draft version 0.6.1

JACKS MOUNTAIN, NV  
2012

ADJOINING 7.5 QUADRANGLES