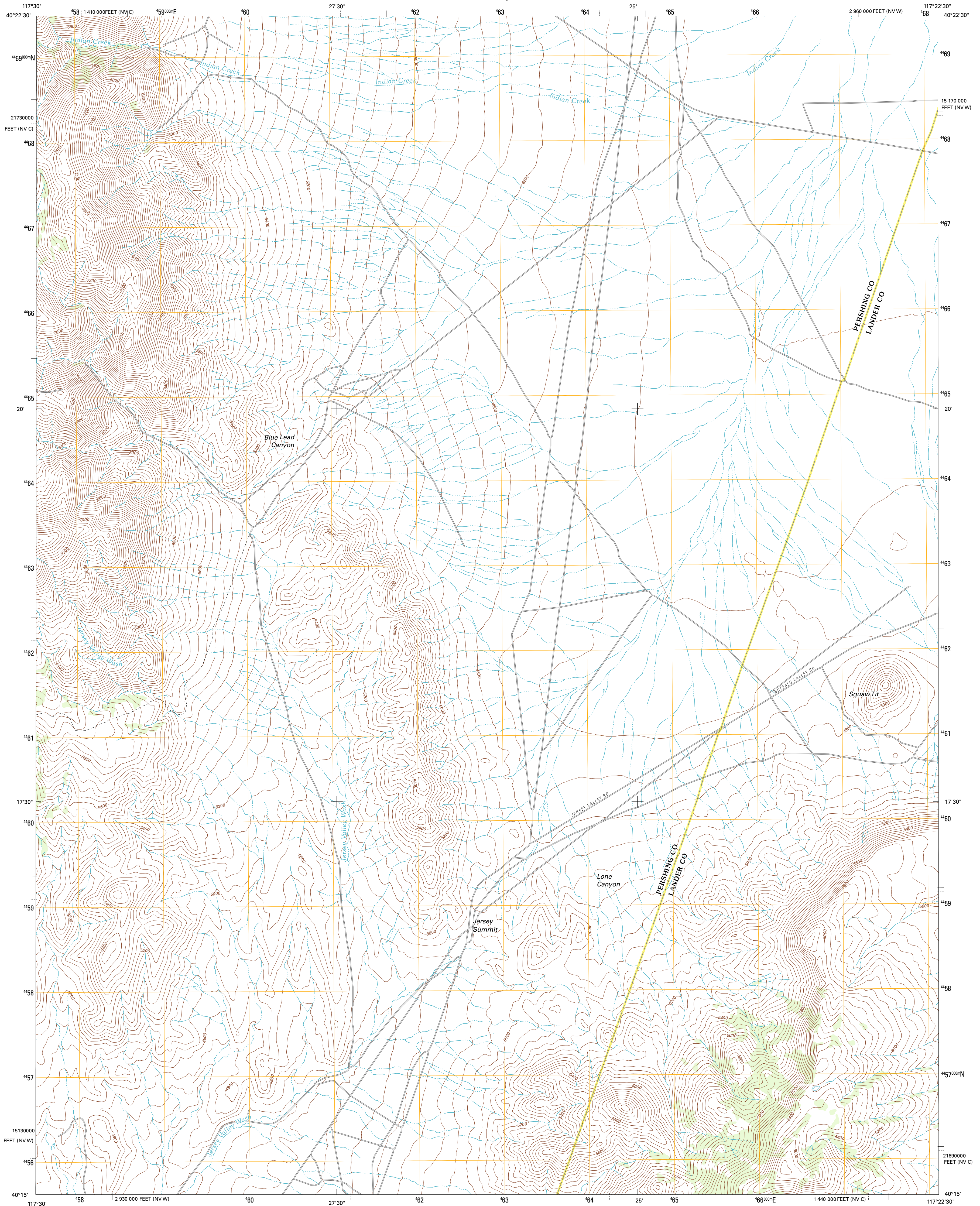




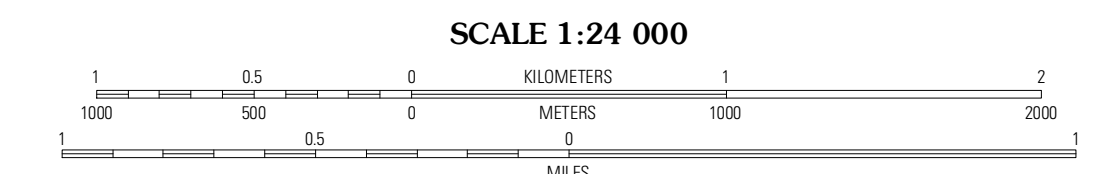
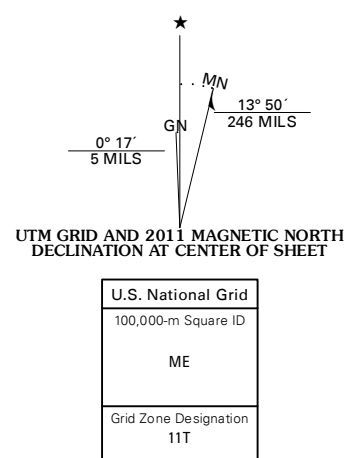
U.S. DEPARTMENT OF THE INTERIOR
U. S. GEOLOGICAL SURVEY



JERSEY SUMMIT QUADRANGLE
NEVADA
7.5-MINUTE SERIES



Produced by the United States Geological Survey
North American Datum of 1983 (NAD83)
World Geodetic System of 1984 (WGS84). Projection and
1 000-meter grid: Universal Transverse Mercator, Zone 11T
10 000-foot ticks: Nevada Coordinate System of 1983 (west
and central zones)



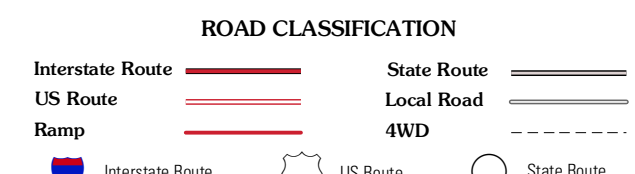
CONTOUR INTERVAL 40 FEET
NORTH AMERICAN VERTICAL DATUM OF 1988

This map was produced to conform with the
National Geospatial Program US Topo Product Standard, 2011.
A metadata file associated with this product is draft version 0.6.1



QUADRANGLE LOCATION

| | | |
|--------------------------|--------------------|------------------------|
| Mount Tobin | Buffalo Springs | Buffalo Springs NE |
| Needle Peak | Jersey Summit | Wild Range Canyon |
| Home Station Ranch | Mount Moses | Fish Creek Basin |



JERSEY SUMMIT, NV
2011

ADJOINING 7.5' QUADRANGLES