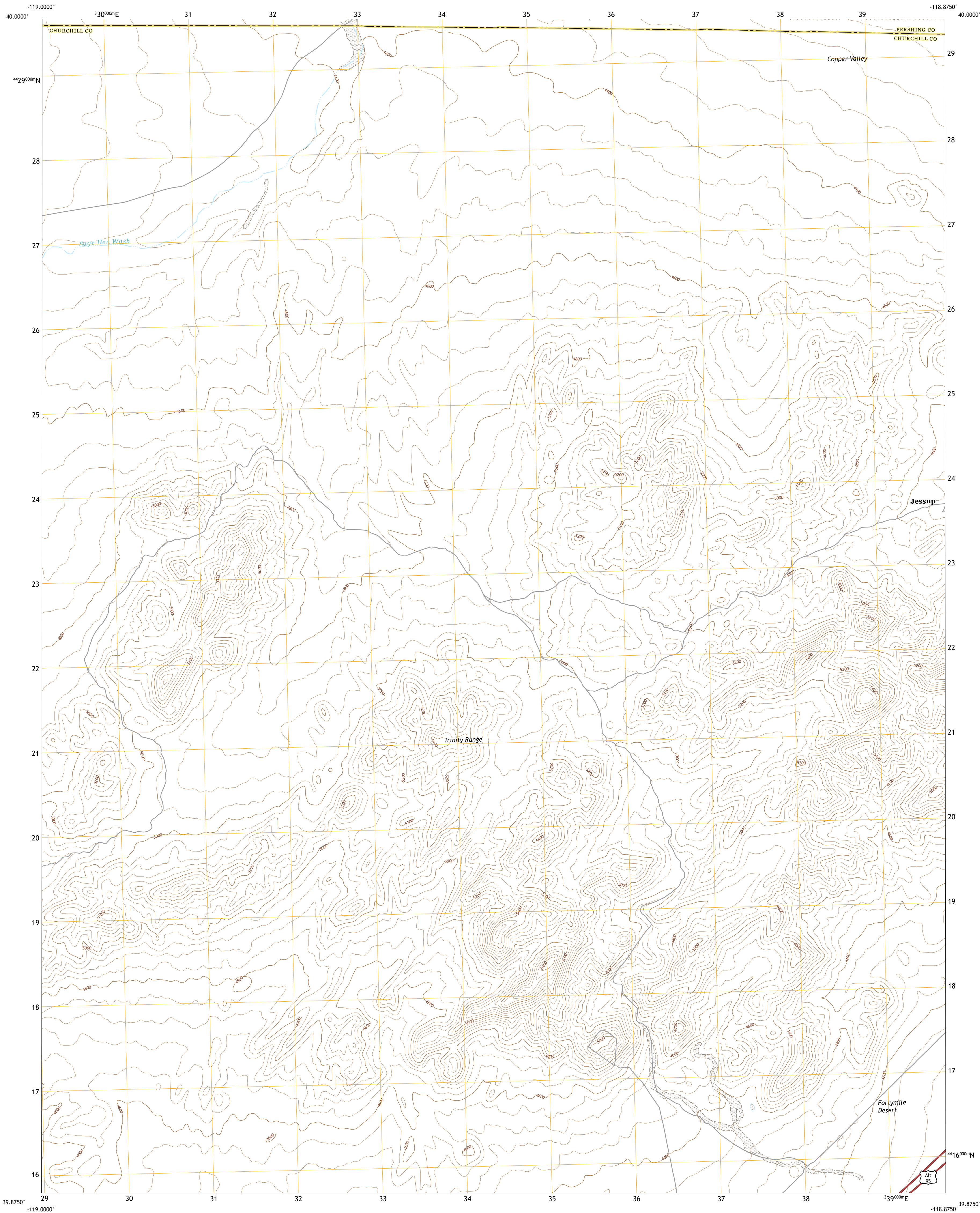




U.S. DEPARTMENT OF THE INTERIOR
U.S. GEOLOGICAL SURVEY



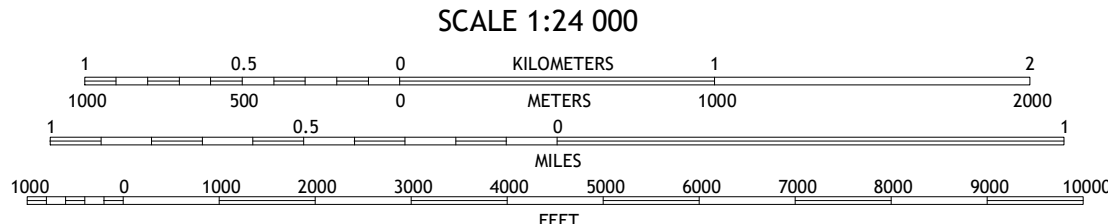
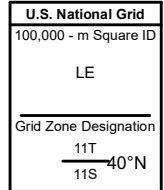
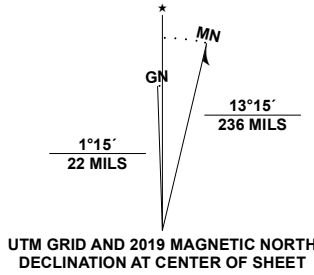
JESSUP QUADRANGLE
NEVADA
7.5-MINUTE SERIES



Produced by the United States Geological Survey

North American Datum of 1983 (NAD83)
World Geodetic System of 1984 (WGS84). Projection and
1 000-meter grid/Universal Transverse Mercator, Zone 11S
This map is not a legal document. Boundaries may be
generalized for this map scale. Private lands within government
reservations may not be shown. Obtain permission before
entering private lands.

Imagery.....NAIP, July 2017 - November 2017
Roads.....U.S. Census Bureau, 2018
Names.....GNIS, 1980 - 1991
Hydrography.....National Hydrography Dataset, 2005 - 2021
Contours.....National Elevation Dataset, 1999
Boundaries.....Multiple sources; see metadata file, 2019 - 2021
Public Land Survey System.....BLM, 2020
Wetlands.....FWS National Wetlands Inventory Not Available

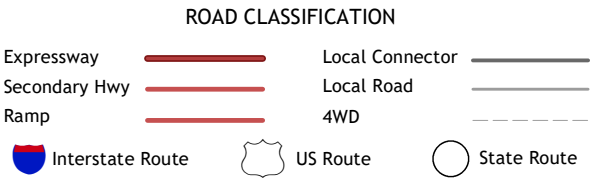


CONTOUR INTERVAL 40 FEET
NORTH AMERICAN VERTICAL DATUM OF 1988
This map was produced to conform with the
National Geospatial Program US Topo Product Standard.



1	2	3
4	5	6
7	8	9

- 1 Bluewing Spring
- 2 Ragged Top Mountain SW
- 3 Ragged Top Mountain
- 4 Telephone Well
- 5 White Plains
- 6 Hot Springs Flat
- 7 Desert Peak
- 8 Parran



JESSUP, NV
2021

