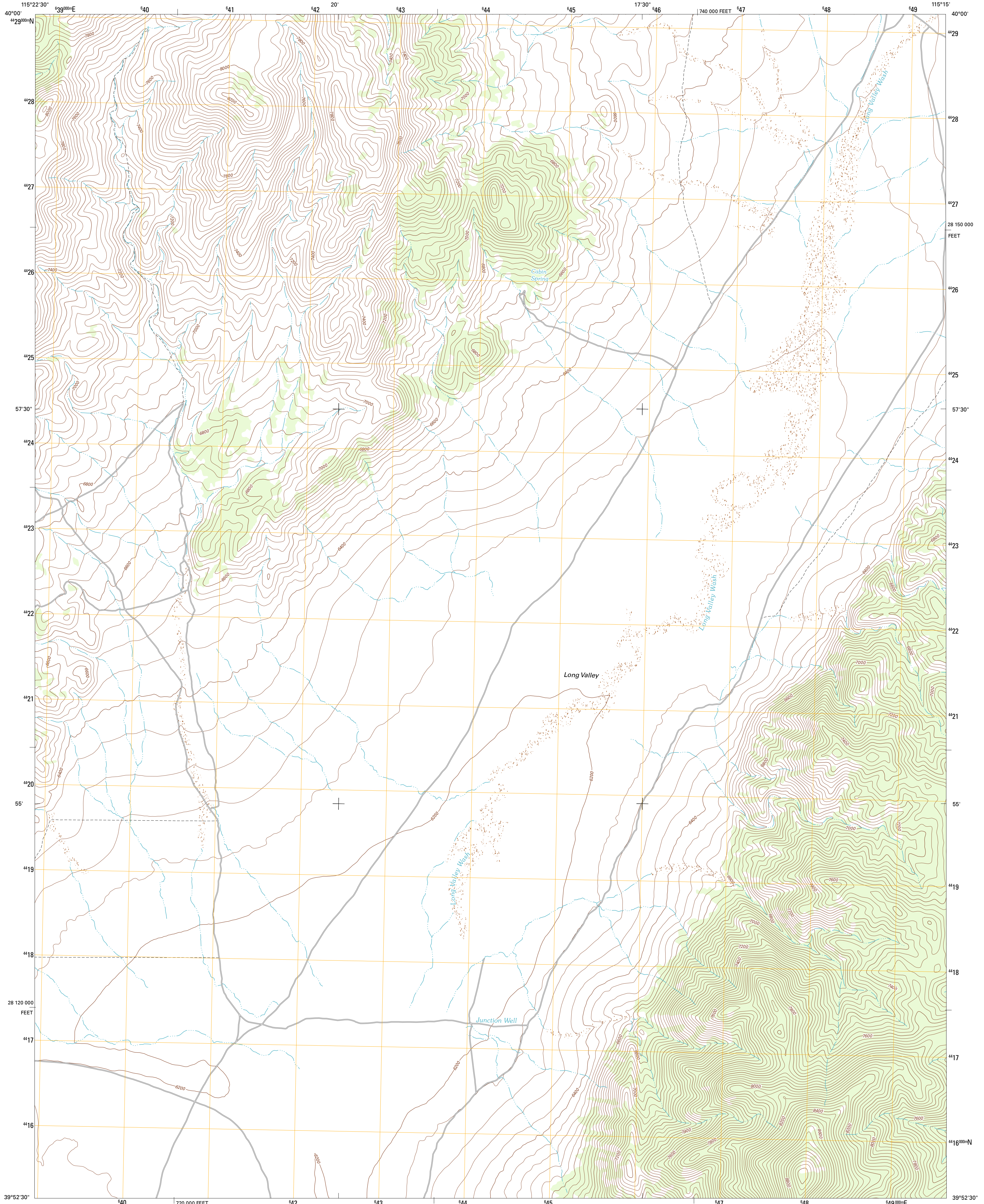




U.S. DEPARTMENT OF THE INTERIOR
U. S. GEOLOGICAL SURVEY



JUNCTION WELL QUADRANGLE
NEVADA-WHITE PINE CO.
7.5-MINUTE SERIES

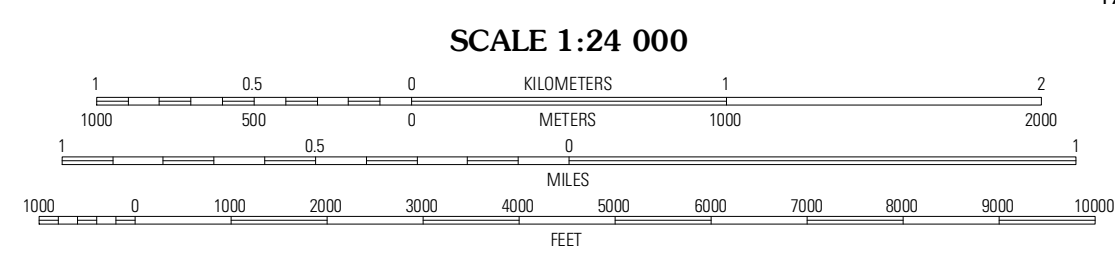


Produced by the United States Geological Survey
North American Datum of 1983 (NAD83)
World Geodetic System of 1984 (WGS84). Projection and
1 000-meter grid: Universal Transverse Mercator, Zone 11S
10 000-foot ticks: Nevada Coordinate System of 1983 (east zone)

Imagery.....NAIP, July 2010
Roads.....©2006-2011 TomTom
Names.....GNIS, 2011
Hydrography.....National Hydrography Dataset, 2010
Contours.....National Elevation Dataset, 2002
Boundaries.....Census, IBWC, USGS, 1972 - 2010

UTM GRID AND 2012 MAGNETIC NORTH DECLINATION AT CENTER OF SHEET

U.S. National Grid
100,000m Square ID
FE
Grid Zone Designation
11S



CONTOUR INTERVAL 40 FEET
NORTH AMERICAN VERTICAL DATUM OF 1988

This map was produced to conform with the National Geospatial Program US Topo Product Standard, 2011. A metadata file associated with this product is draft version 0.6.1



ROAD CLASSIFICATION

Interstate Route
US Route
Ramp

State Route
Local Road
4WD

QUADRANGLE LOCATION

Station Butte	Ruby Lake SE	Post Spring
Topinal Spring	Junction Well	Ninemile Well NW
Long Valley Slough	Cabin Spring	Cow Camp

ADJOINING 7.5 QUADRANGLES

JUNCTION WELL, NV
2012