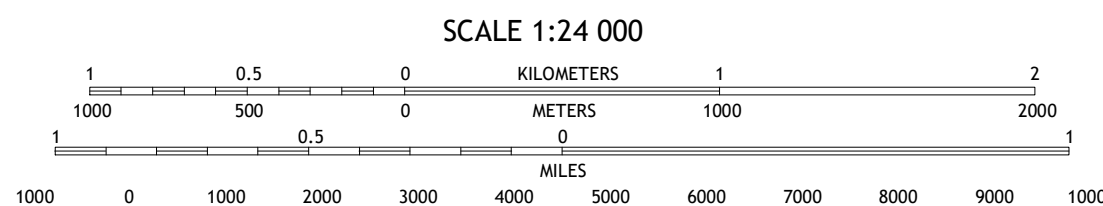
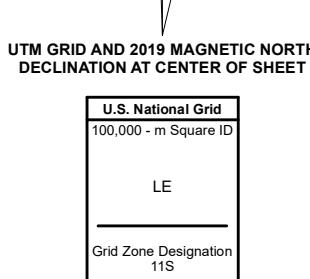
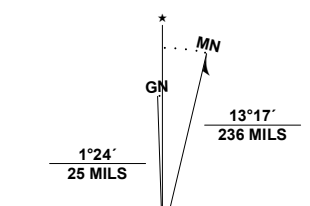


Produced by the United States Geological Survey

North American Datum of 1983 (NAD83) World Geodetic System of 1984 (WGS84) Projection and 1:000-meter grid/Universal Transverse Mercator, Zone 11S This map is not a legal document. Boundaries may be generalized for this map scale. Private lands within government reservations may not be shown. Obtain permission before entering private lands.

Imagery.....NAIP, June 2017 - November 2017 Roads.....U.S. Census Bureau, 2018 Names.....GNIS, 1980-2018 Hydrography.....National Hydrography Dataset, 2005 - 2019 Contours.....National Elevation Dataset, 2001 Boundaries.....Multiple sources: see metadata file, 2019 - 2021 Public Land Survey System.....BLM, 2020 Wetlands.....FWS National Wetlands Inventory Not Available



CONTOUR INTERVAL 40 FEET NORTH AMERICAN VERTICAL DATUM OF 1988 This map was produced to conform with the National Geospatial Program US Topo Product Standard.



ADJOINING QUADRANGLES table with 8 cells containing numbers 1-8

- 1 Russell Peak 2 Black Warrior Peak 3 Telephone Well 4 Nixon 5 Hot Springs Flat 6 Wadsworth 7 Two Tips 8 Eagle Rock

ROAD CLASSIFICATION table with columns for Expressway, Secondary Hwy, Ramp, Interstate Route, Local Connector, Local Road, 4WD, US Route, and State Route

