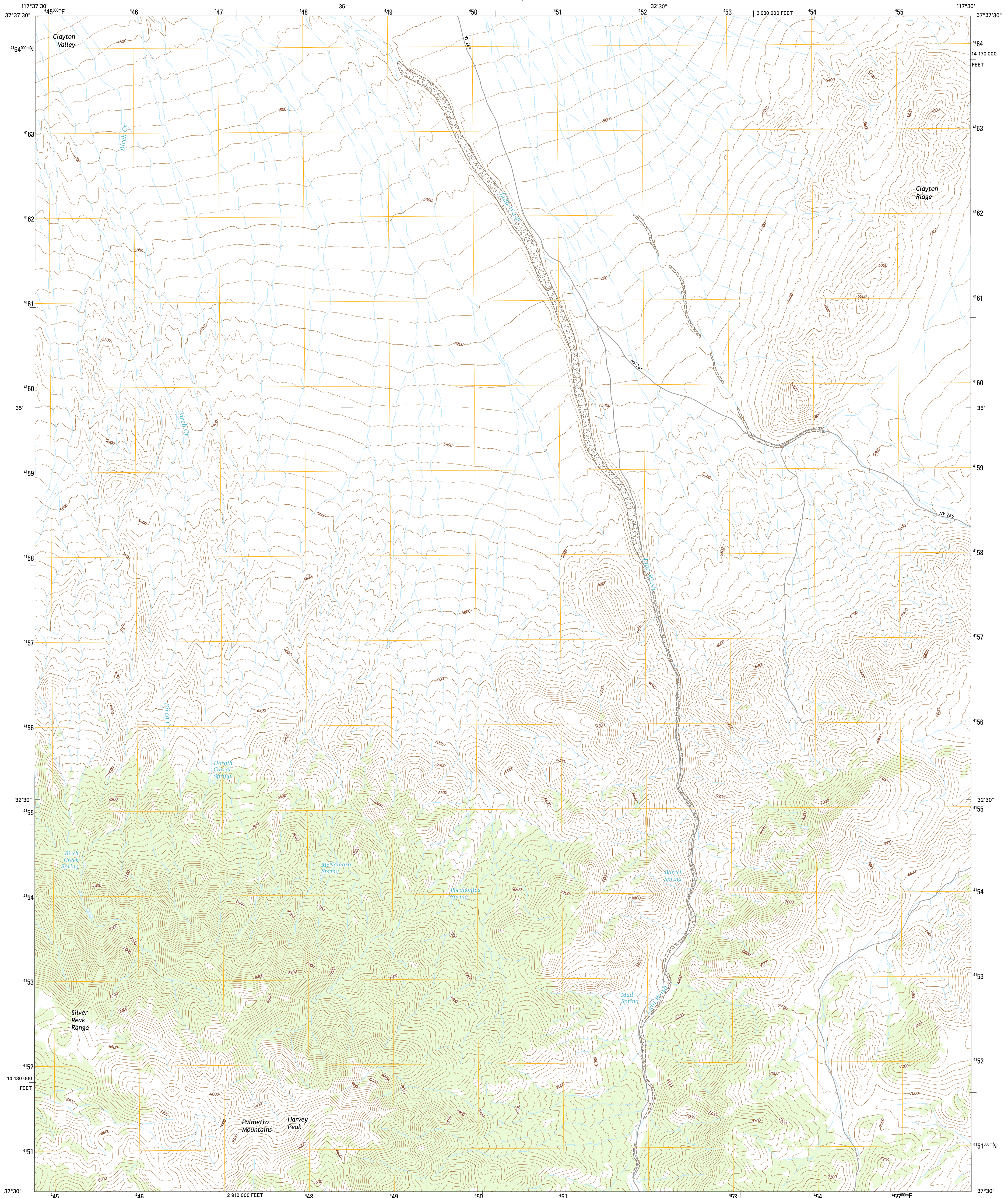




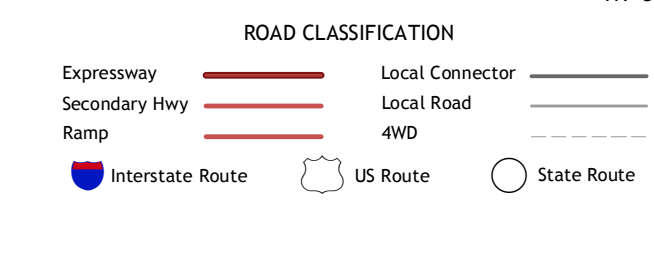
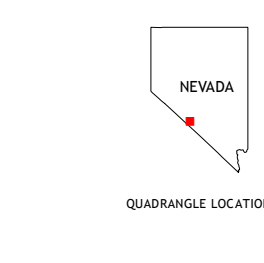
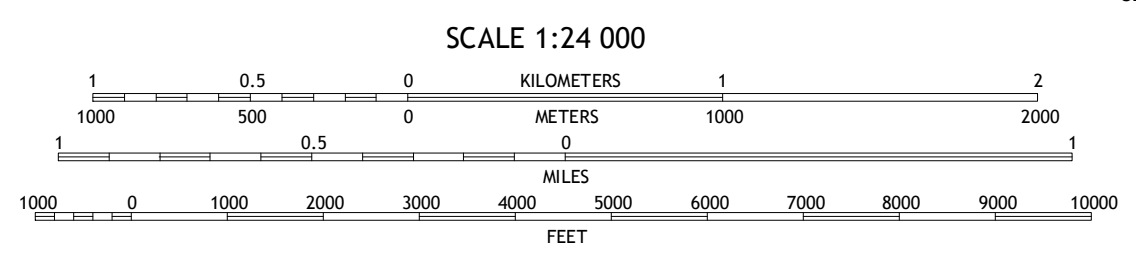
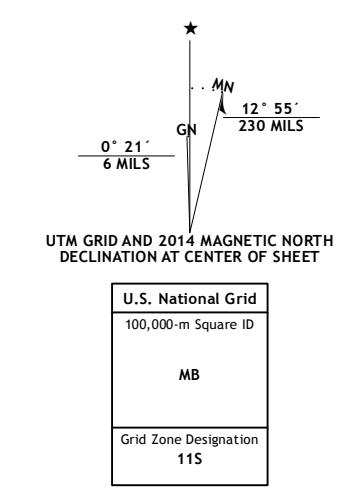
U.S. DEPARTMENT OF THE INTERIOR
U.S. GEOLOGICAL SURVEY



LIDA WASH QUADRANGLE
NEVADA-ESMERALDA CO.
7.5-MINUTE SERIES



Produced by the United States Geological Survey
 North American Datum of 1983 (NAD83)
 World Geodetic System of 1984 (WGS84). Projection and
 1 000-meter grid: Universal Transverse Mercator, Zone 11S
 10 000-foot ticks: Nevada Coordinate System of 1983 (west
 zone)
 This map is not a legal document. Boundaries may be
 generalized for this map scale. Private lands within government
 reservations may not be shown. Obtain permission before
 entering private lands.
 Imagery.....N.A.I.P. August 2013
 Roads.....HERE, ©2013
 Names.....G.N.I.S., 2013
 Hydrography.....National Hydrography Dataset, 2013
 Contours.....National Elevation Dataset, 2001
 Boundaries.....Multiple sources; see metadata file 1972 - 2014
 Public Land Survey System.....B.L.M., 2011



1	2	3
4	5	6
7	8	

ADJOINING QUADRANGLES

- Lida Wash NW
- Alcatraz Island
- Spite Mountain
- Lida Wash SW
- Montezuma Peak SW
- Sylvania Mountains
- Magruder Mountain
- Lida

LIDA WASH, NV
2014

