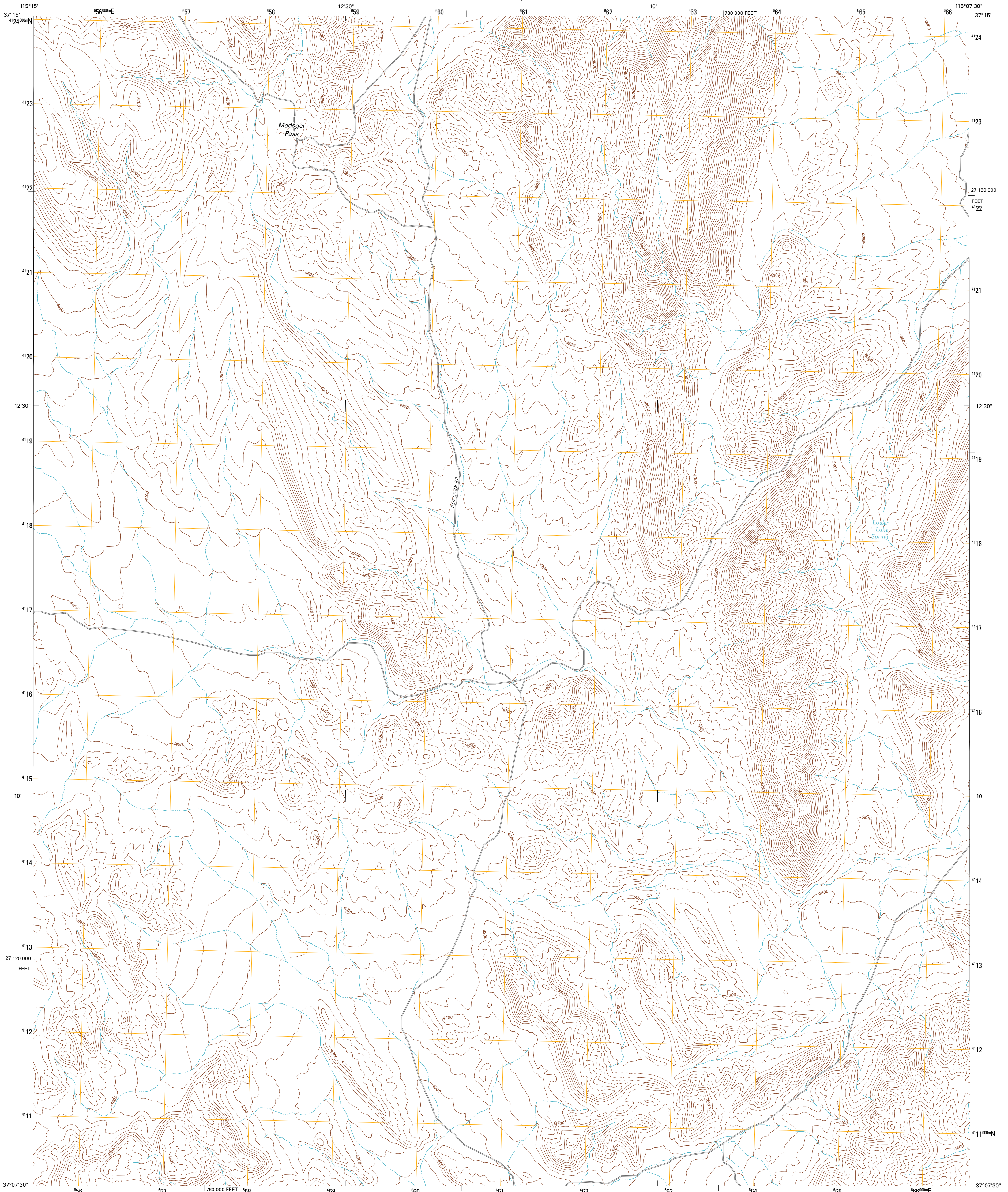




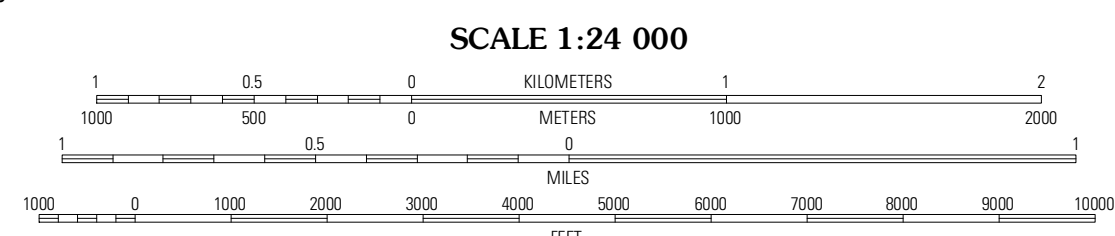
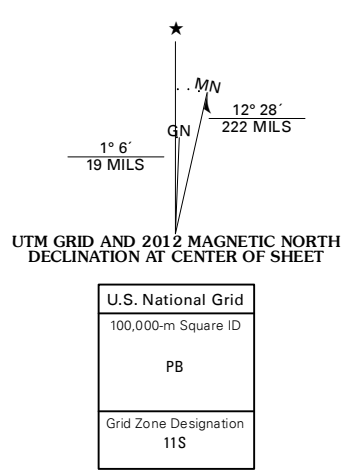
U.S. DEPARTMENT OF THE INTERIOR
U. S. GEOLOGICAL SURVEY



LOWER PAHRANAGAT LAKE NW QUADRANGLE
NEVADA-LINCOLN CO.
7.5-MINUTE SERIES



Produced by the United States Geological Survey
North American Datum of 1983 (NAD83)
World Geodetic System of 1984 (WGS84). Projection and
1 000-meter grid: Universal Transverse Mercator, Zone 11S
10 000-foot ticks: Nevada Coordinate System of 1983 (east
zone)

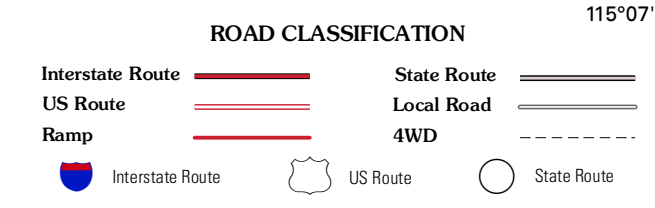


CONTOUR INTERVAL 40 FEET
NORTH AMERICAN VERTICAL DATUM OF 1988
This map was produced to conform with the
National Geospatial Program US Topo Product Standard, 2011.
A metadata file associated with this product is draft version 0.6.1



QUADRANGLE LOCATION

Badger Spring	Alamo	Alamo SE
Desert Hills NE	Lower Pahranaagat Lake NW	Lower Pahranaagat Lake
Desert Hills SE	Lower Pahranaagat Lake SW	Lower Pahranaagat Lake SE



LOWER PAHRANAGAT LAKE NW, NV
2012

ADJOINING 7.5 QUADRANGLES