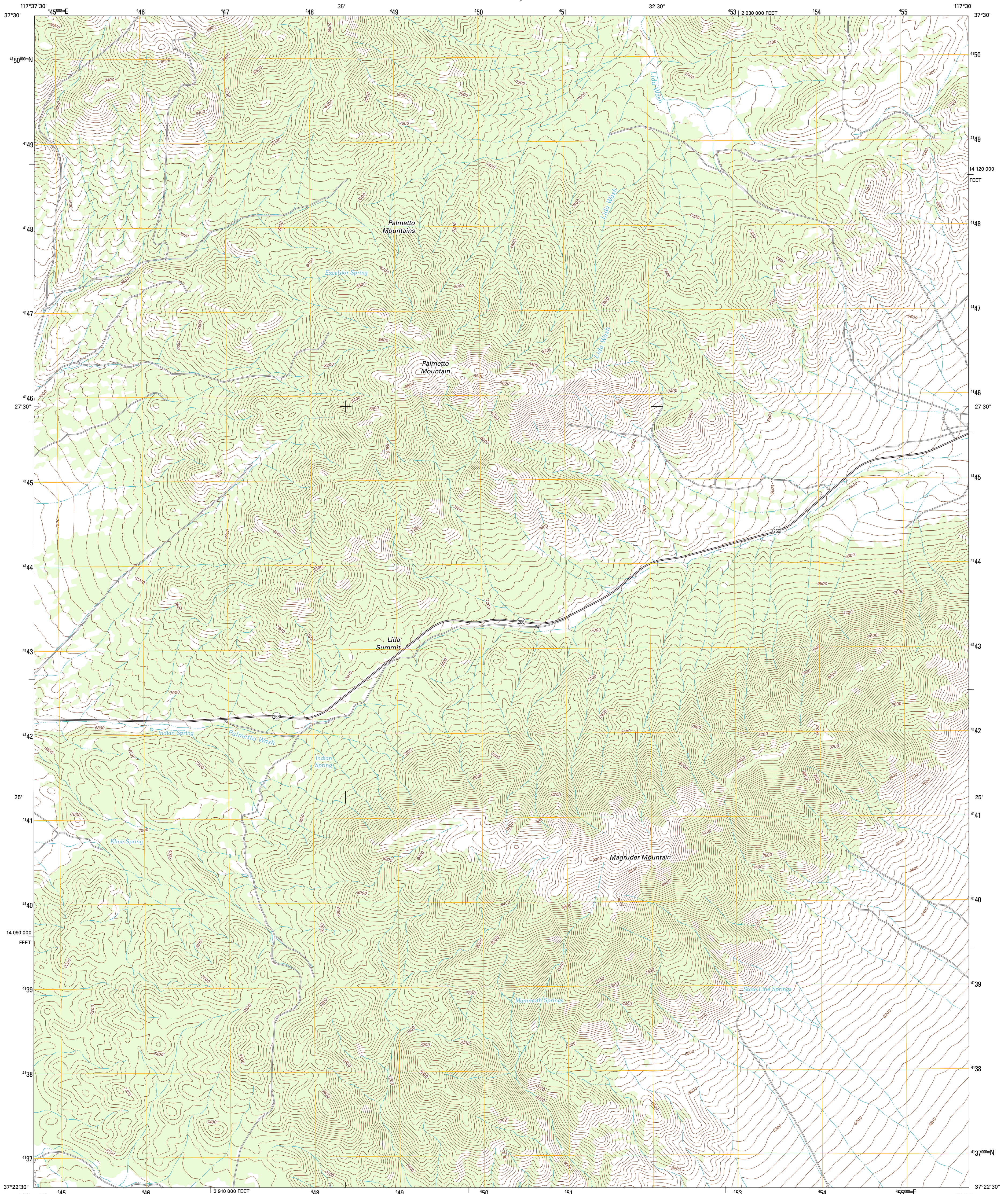




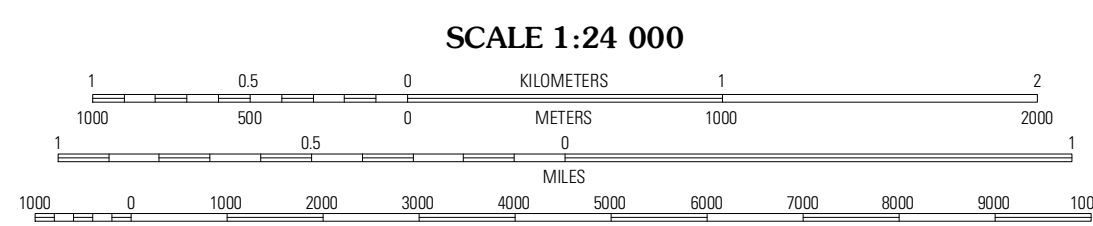
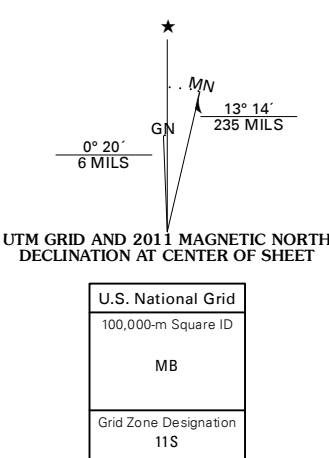
U.S. DEPARTMENT OF THE INTERIOR
U. S. GEOLOGICAL SURVEY



MAGRUDER MOUNTAIN QUADRANGLE
NEVADA-ESMERALDA CO.
7.5-MINUTE SERIES

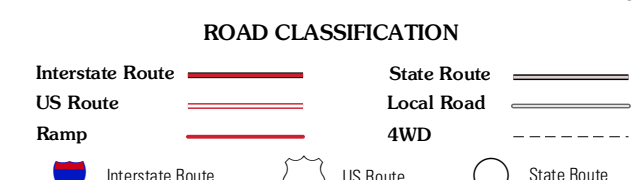


Produced by the United States Geological Survey
North American Datum of 1983 (NAD83)
World Geodetic System of 1984 (WGS84). Projection and
1 000-meter grid: Universal Transverse Mercator, Zone 11S
10 000-foot ticks: Nevada Coordinate System of 1983 (west
zone)



CONTOUR INTERVAL 40 FEET
NORTH AMERICAN VERTICAL DATUM OF 1988

This map was produced to conform with the
National Geospatial Program US Topo Product Standard, 2011.
A metadata file associated with this product is draft version 0.6.1



QUADRANGLE LOCATION

Lida Wash SW	Lida Wash	Montezuma Peak SW
Sylvania Mountains	Magruder Mountain	Lida
Last Chance Mountain	Tule Canyon	Gold Point SW

MAGRUDER MOUNTAIN, NV
2011

ADJOINING 7.5' QUADRANGLES