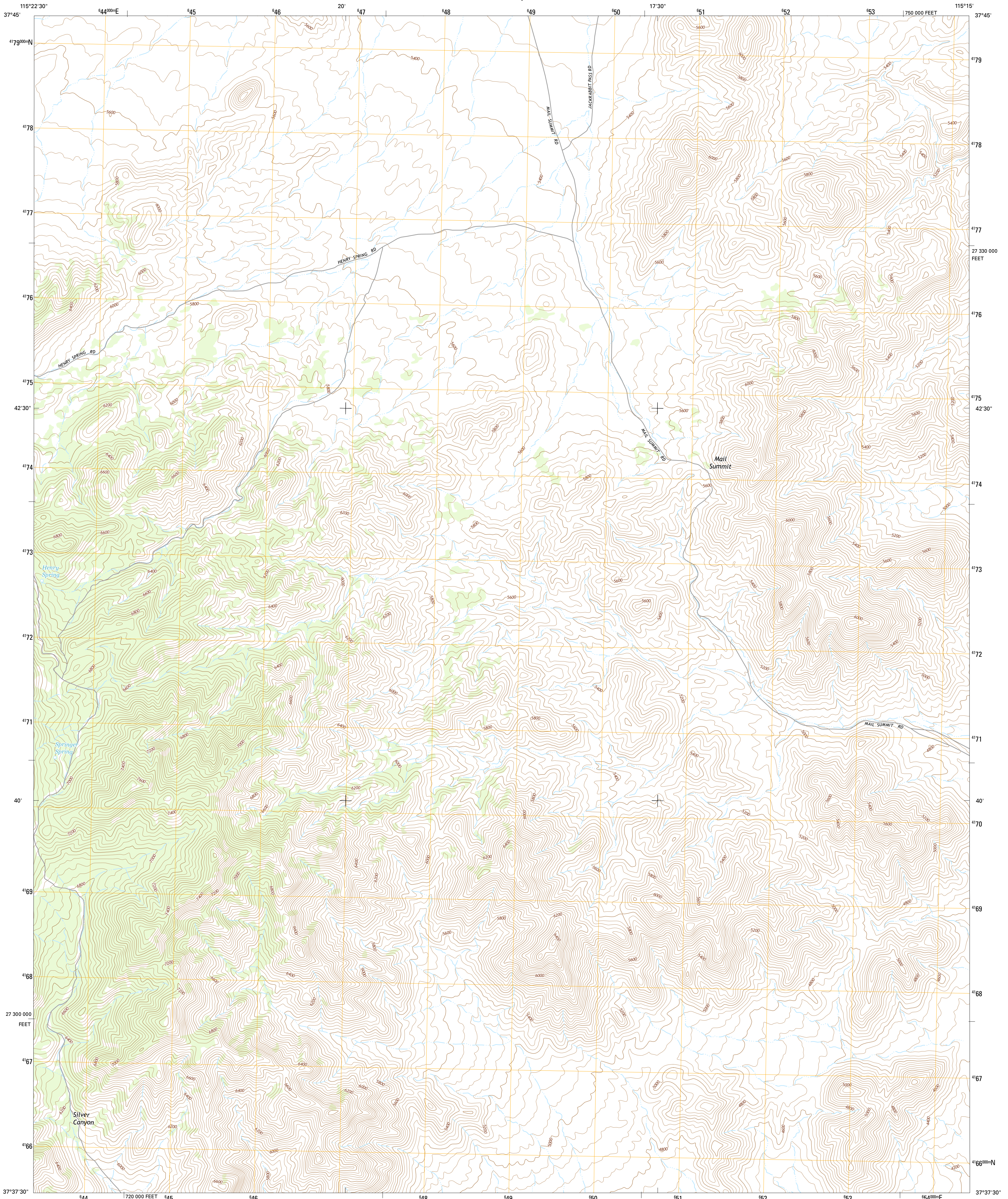




U.S. DEPARTMENT OF THE INTERIOR  
U.S. GEOLOGICAL SURVEY



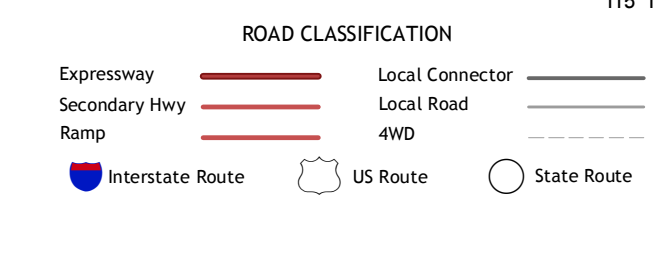
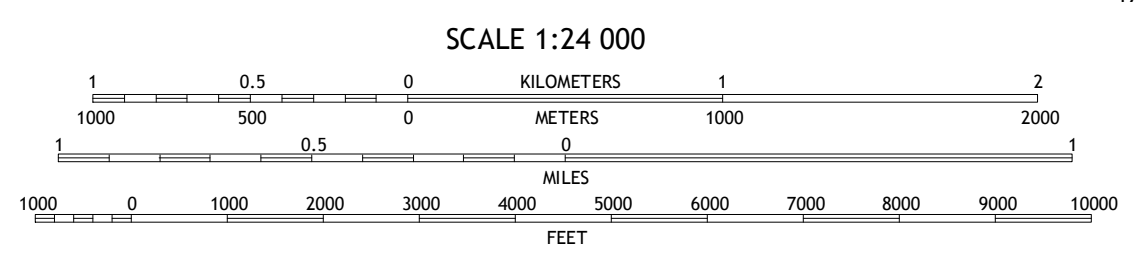
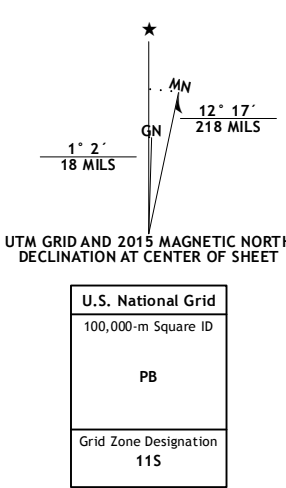
MAIL SUMMIT QUADRANGLE  
NEVADA-LINCOLN CO.  
7.5-MINUTE SERIES



Produced by the United States Geological Survey  
North American Datum of 1983 (NAD83)  
World Geodetic System of 1984 (WGS84). Projection and  
1 000-meter grid: Universal Transverse Mercator, Zone 11S  
10 000-foot ticks: Nevada Coordinate System of 1983 (east zone)

This map is not a legal document. Boundaries may be  
generalized for this map scale. Private lands within government  
reservations may not be shown. Obtain permission before  
entering private lands.

Imagery.....NAIP, September 2013  
Roads.....HERE, ©2013  
Names.....GNIS, 2013  
Hydrography.....National Hydrography Dataset, 2013  
Contours.....National Elevation Dataset, 2004  
Boundaries.....Multiple sources; see metadata file 1972 - 2014  
Public Land Survey System.....BLM, 2011



ADJOINING QUADRANGLES

1	2	3
4	5	6
7	8	

- 1 Murphy Gap
- 2 Murphy Gap SE
- 3 Seaman Wash
- 4 Mount Irish
- 5 Fossil Peak
- 6 Crescent Spring
- 7 Mount Irish SE
- 8 Hiko

MAIL SUMMIT, NV  
2015



U.S. GEOLOGICAL SURVEY  
NATIONAL GEOSPATIAL PROGRAM  
US TOPO PRODUCT STANDARD, 2011.  
A metadata file associated with this product is draft version 0.6.18