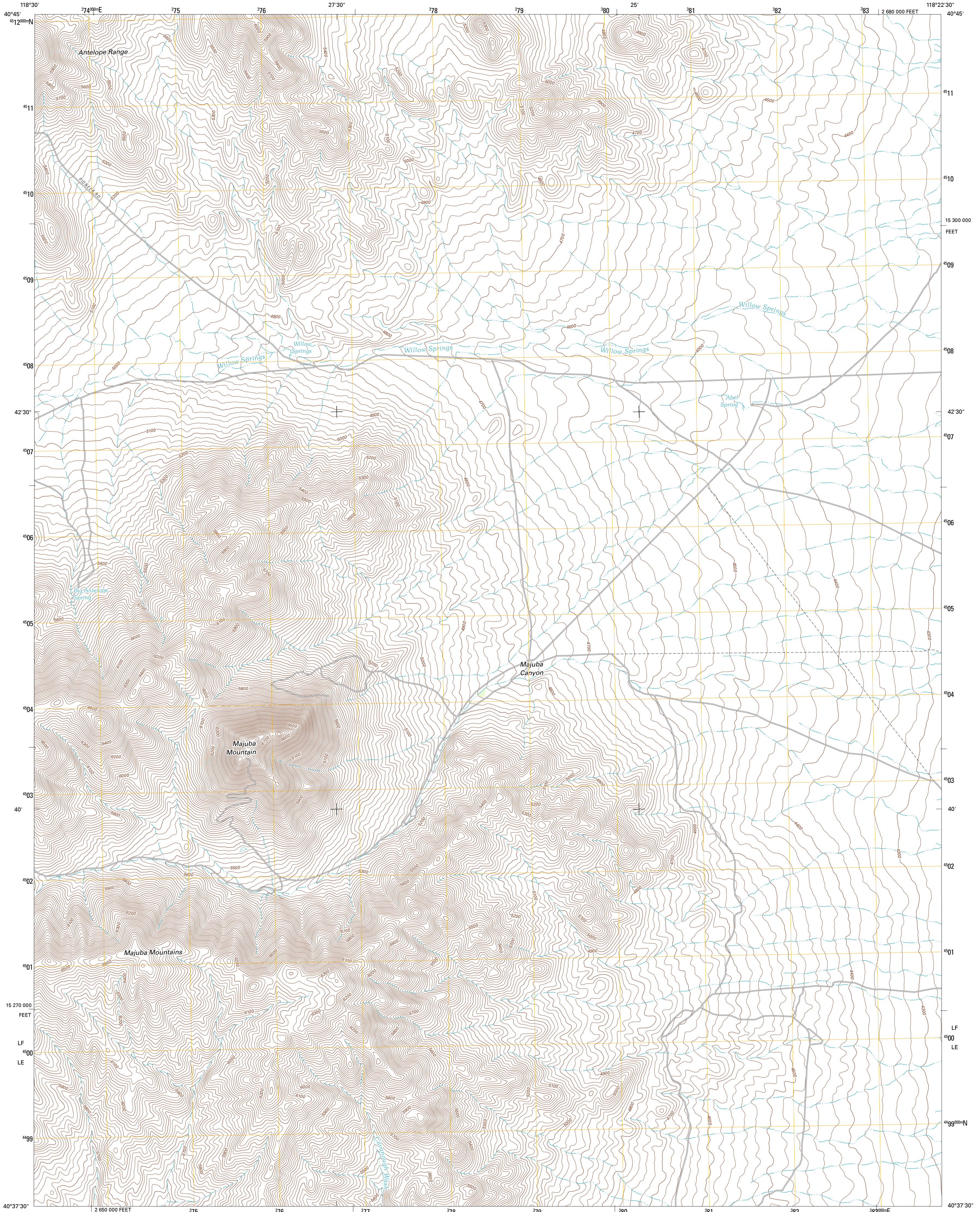




U.S. DEPARTMENT OF THE INTERIOR  
U. S. GEOLOGICAL SURVEY

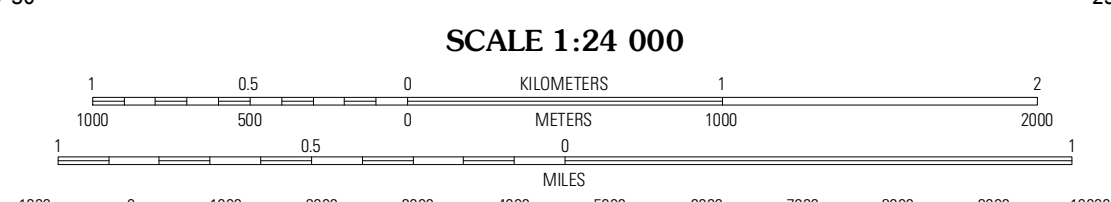
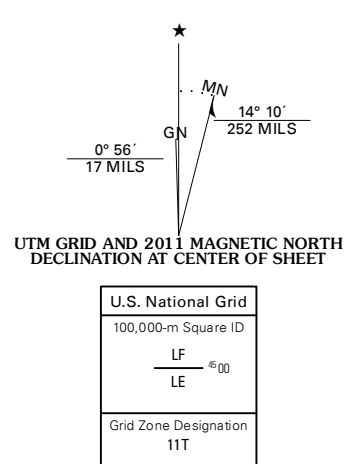


MAJUBA MOUNTAIN QUADRANGLE  
NEVADA-PERSHING CO.  
7.5-MINUTE SERIES



Produced by the United States Geological Survey  
North American Datum of 1983 (NAD83)  
World Geodetic System of 1984 (WGS84). Projection and  
1 000-meter grid: Universal Transverse Mercator, Zone 11T  
10 000-foot ticks: Nevada Coordinate System of 1983 (west zone)

Imagery:.....NAIP, June 2010  
Roads:.....©2006-2011 TomTom  
Names:.....GNIS, 2011  
Hydrography:.....National Hydrography Dataset, 2010  
Contours:.....National Elevation Dataset, 1999  
Boundaries:.....Census, IBWC, IBC, USGS, 1972-2010

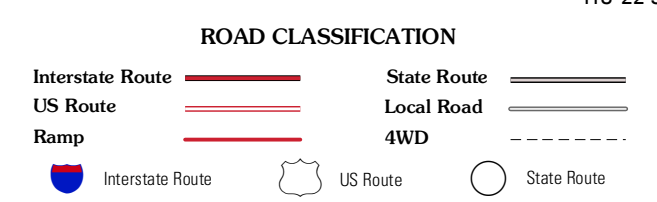


CONTOUR INTERVAL 20 FEET  
NORTH AMERICAN VERTICAL DATUM OF 1988  
This map was produced to conform with the  
National Geospatial Program US Topo Product Standard, 2011.  
A metadata file associated with this product is draft version 0.6.1



QUADRANGLE LOCATION

Sawtooth Knob	Long Canyon	Alpha Mountain
Scossa	Majuba Mountain	Rye Patch Reservoir North
Poker Brown Gap	Poker Brown	Rye Patch Reservoir South



MAJUBA MOUNTAIN, NV  
2011