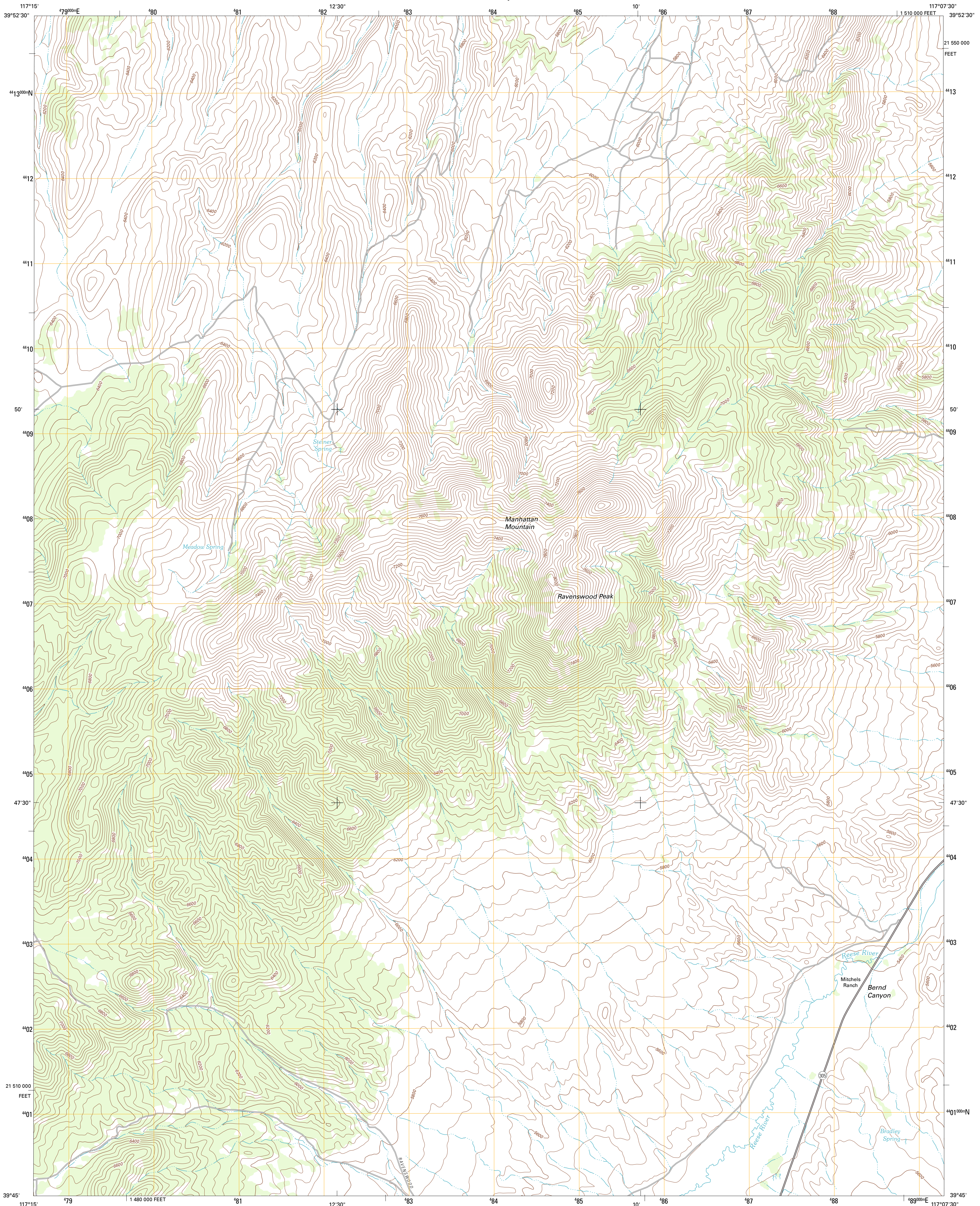




U.S. DEPARTMENT OF THE INTERIOR
U. S. GEOLOGICAL SURVEY



MANHATTAN MOUNTAIN QUADRANGLE
NEVADA-LANDER CO.
7.5-MINUTE SERIES

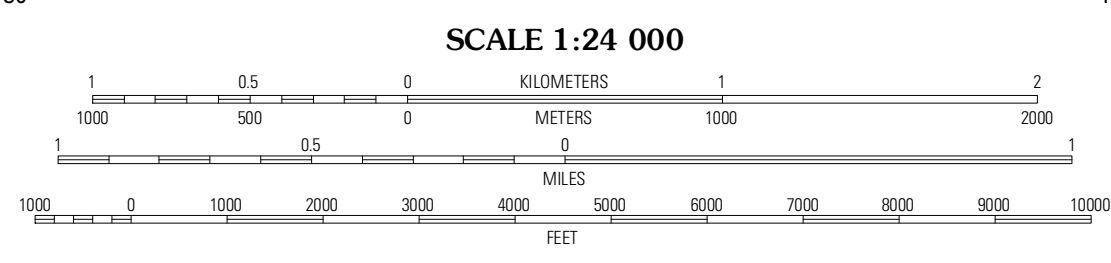


Produced by the United States Geological Survey
North American Datum of 1983 (NAD83)
World Geodetic System of 1984 (WGS84). Projection and
1 000-meter grid: Universal Transverse Mercator, Zone 11S
10 000-foot ticks: Nevada Coordinate System of 1983
(central zone)

Imagery.....NAIP, June 2010
Roads.....©2006-2011 TomTom
Names.....GNIS, 2011
Hydrography.....National Hydrography Dataset, 2010
Contours.....National Elevation Dataset, 1999
Boundaries.....Census, BWC, IBC, USGS, 1972 - 2010

UTM GRID AND 2011 MAGNETIC NORTH
DECLINATION AT CENTER OF SHEET

U.S. National Grid
100,000m Square ID
ME
Grid Zone Designation
11S



CONTOUR INTERVAL 40 FEET
NORTH AMERICAN VERTICAL DATUM OF 1988

This map was produced to conform with the
National Geospatial Program US Topo Product Standard, 2011.
A metadata file associated with this product is draft version 0.6.1



QUADRANGLE LOCATION

Gilbert Creek NE	Manhattan Mountain NW	Manhattan Mountain NE
Gilbert Creek SE	Manhattan Mountain	Joe Eason Mountain
Mount Airy NE	Vigas Butte NW	Vigas Butte NE

ADJOINING 7.5 QUADRANGLES

ROAD CLASSIFICATION

Interstate Route

US Route

Ramp

State Route

Local Road

4WD

Interstate Route

US Route

State Route

MANHATTAN MOUNTAIN, NV
2011