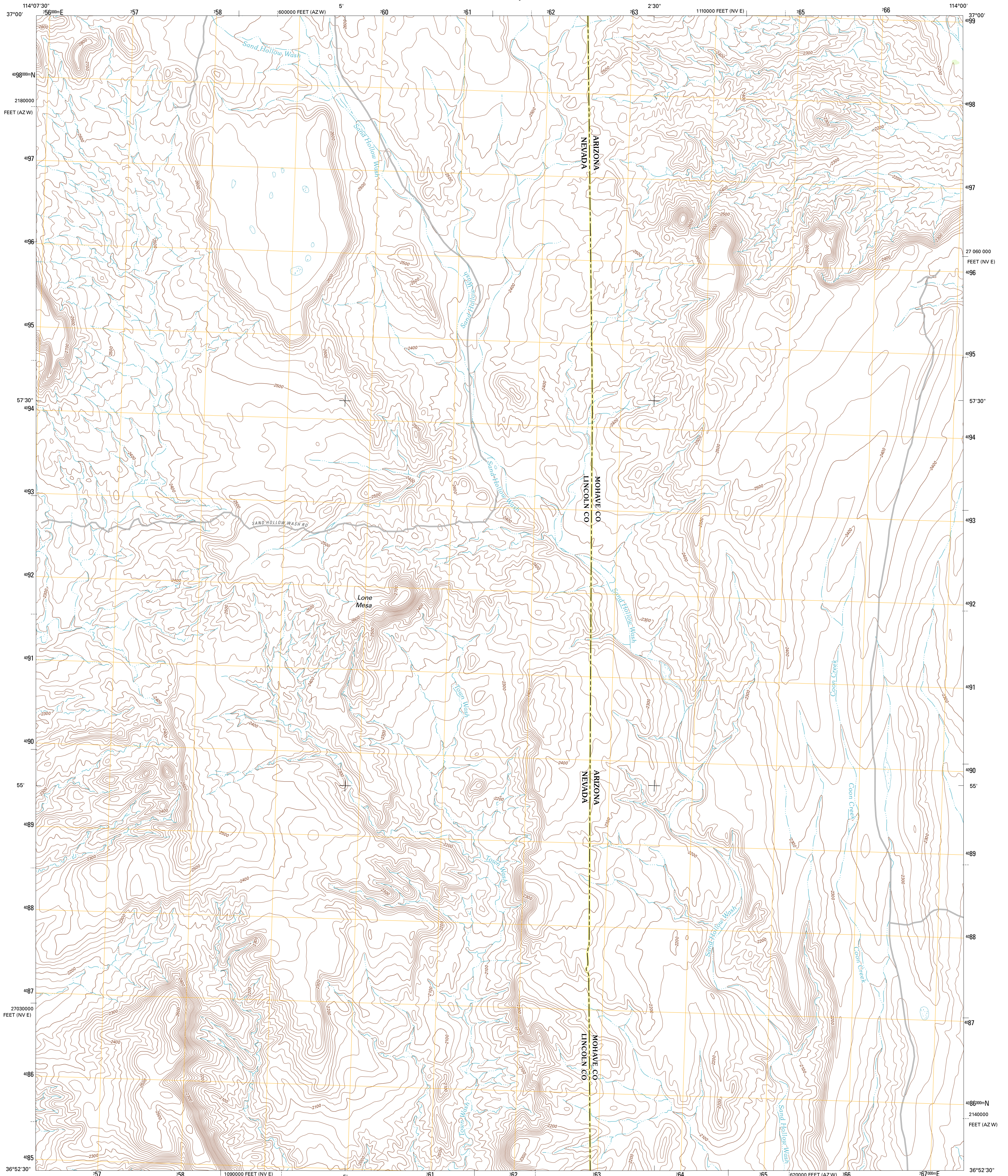




U.S. DEPARTMENT OF THE INTERIOR
U. S. GEOLOGICAL SURVEY

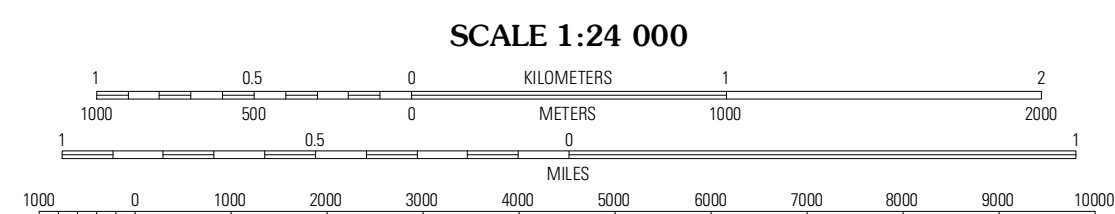
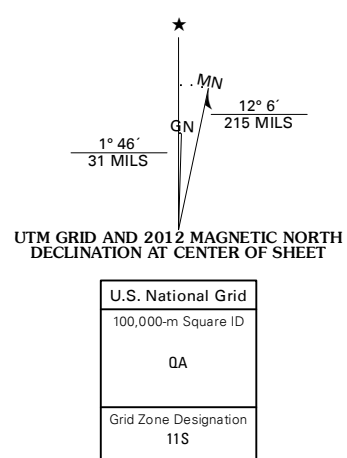


MESQUITE NE QUADRANGLE
NEVADA-ARIZONA
7.5-MINUTE SERIES



Produced by the United States Geological Survey
North American Datum of 1983 (NAD83)
World Geodetic System of 1984 (WGS84). Projection and
1 000-meter grid: Universal Transverse Mercator, Zone 11S
10 000-foot ticks: Nevada Coordinate System of 1983 (east
zone), Arizona Coordinate System of 1983 (west zone)

Imagery.....NAIP, July 2009 - May 2010
Roads.....©2006-2011 TomTom
Names.....GNS, 2011
Hydrography.....National Hydrography Dataset, 2009
Contours.....National Elevation Dataset, 2001
Boundaries.....Census, IBWC, IBC, USGS, 1972 - 2010



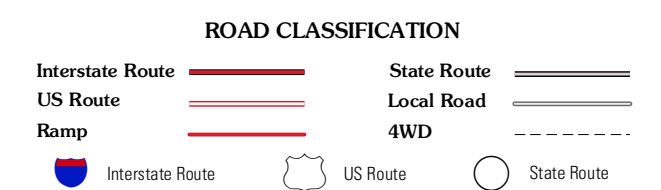
CONTOUR INTERVAL 20 FEET
NORTH AMERICAN VERTICAL DATUM OF 1988

This map was produced to conform with the
National Geospatial Program US Topo Product Standard, 2011.
A metadata file associated with this product is draft version 0.6.1



QUADRANGLE LOCATION

| | | |
|---------------|---------------|--------------|
| Tule Spring | Terry Benches | Castle Cliff |
| Mesquite NW | Mesquite NE | Littlefield |
| Flat Top Mesa | Mesquite | Elbow Canyon |



MESQUITE NE, NV-AZ
2012

ADJOINING 7.5' QUADRANGLES