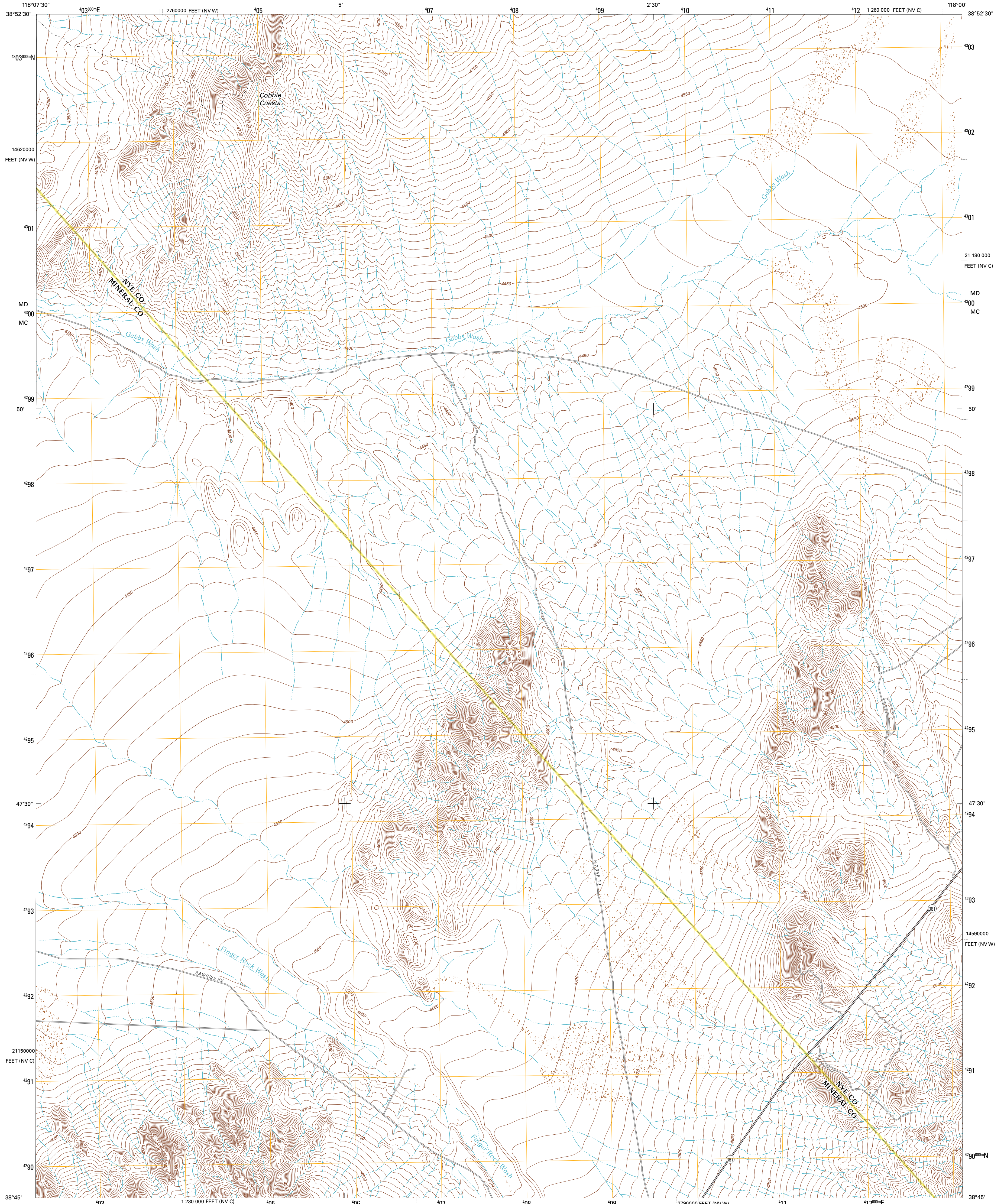




U.S. DEPARTMENT OF THE INTERIOR  
U. S. GEOLOGICAL SURVEY

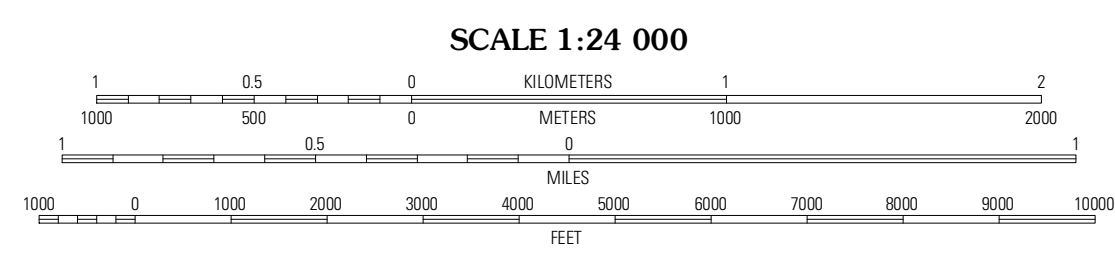
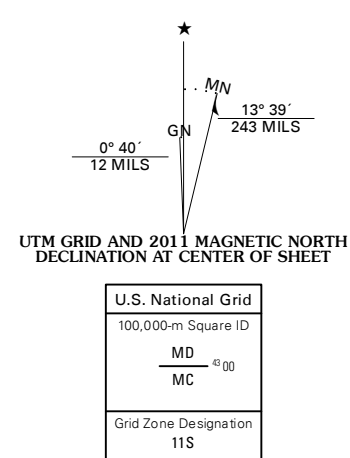


MOUNT ANNIE SE QUADRANGLE  
NEVADA  
7.5-MINUTE SERIES

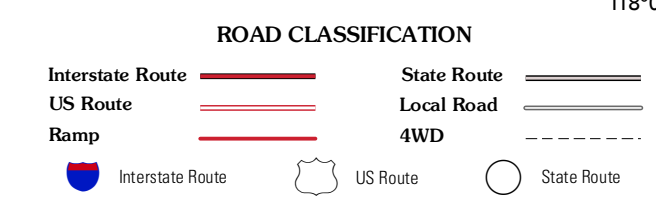
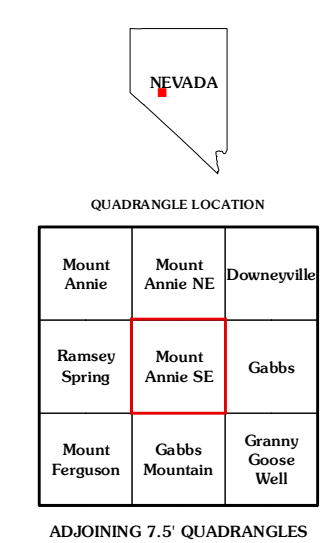


Produced by the United States Geological Survey  
North American Datum of 1983 (NAD83)  
World Geodetic System of 1984 (WGS84), Projection and  
1 000-meter grid: Universal Transverse Mercator, Zone 11S  
10 000-foot ticks: Nevada Coordinate System of 1983  
(central and west zones)

Imagery.....NAIP, June 2010  
Roads.....©2006-2011 TomTom  
Names.....©2011  
Hydrography.....National Hydrography Dataset, 2010  
Contours.....National Elevation Dataset, 2003  
Boundaries.....Census, IBWC, USGS, 1972 - 2010



CONTOUR INTERVAL 10 FEET  
NORTH AMERICAN VERTICAL DATUM OF 1988  
This map was produced to conform with the  
National Geospatial Program US Topo Product Standard, 2011.  
A metadata file associated with this product is draft version 0.6.1



MOUNT ANNIE SE, NV  
2011