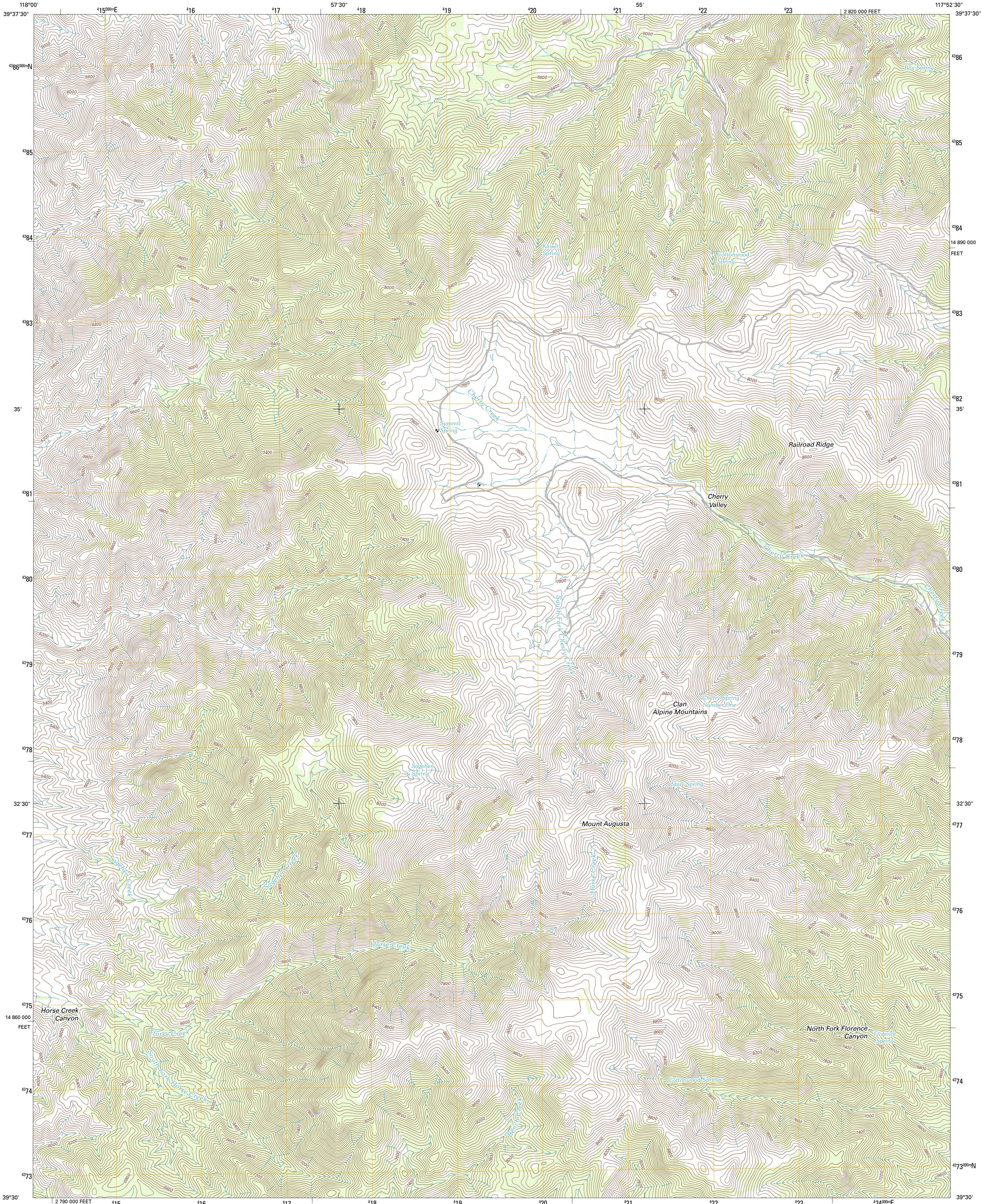




U.S. DEPARTMENT OF THE INTERIOR
U. S. GEOLOGICAL SURVEY

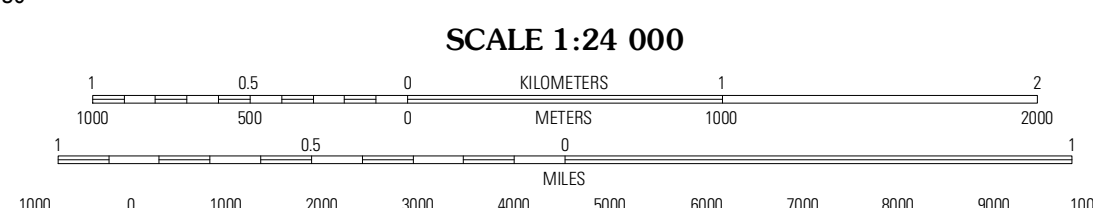
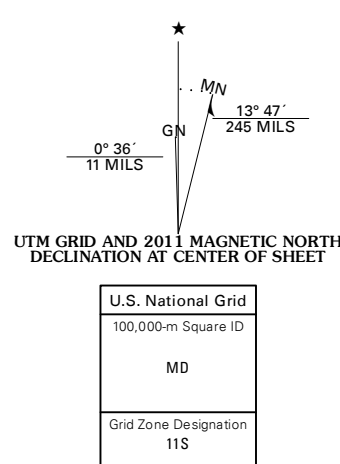


MOUNT AUGUSTA QUADRANGLE
NEVADA-CHURCHILL CO.
7.5-MINUTE SERIES



Produced by the United States Geological Survey
North American Datum of 1983 (NAD83)
World Geodetic System of 1984 (WGS84) Projection and
1 000-meter grid: Universal Transverse Mercator, Zone 11 S
10 000-foot ticks: Nevada Coordinate System of 1983 (west
zone)

Imagery.....N.A.P., June 2010
Roads.....©2006-2011 TomTom
Names.....GNIS, 2011
Hydrography.....National Hydrography Dataset, 2010
Contours.....National Elevation Dataset, 2003
Boundaries.....Census, IBWC, IBC, USGS, 1972 - 2010



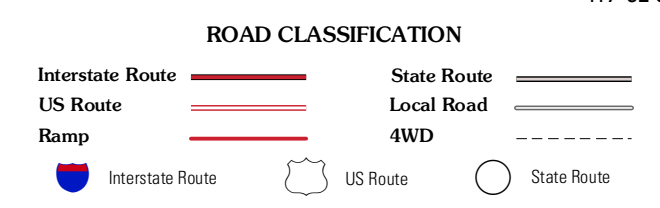
CONTOUR INTERVAL 40 FEET
NORTH AMERICAN VERTICAL DATUM OF 1988

This map was produced to conform with the
National Geospatial Program US Topo Product Standard, 2011.
A metadata file associated with this product is draft version 0.6.1



QUADRANGLE LOCATION

Dixie Valley	Cow Canyon	Byers Canyon
Dixie Valley SE	Mount Augusta	Clan Alpine Ranch
Wonder Mountain	Camp Creek Canyon	Cold Springs



MOUNT AUGUSTA, NV
2011

ADJOINING 7.5' QUADRANGLES