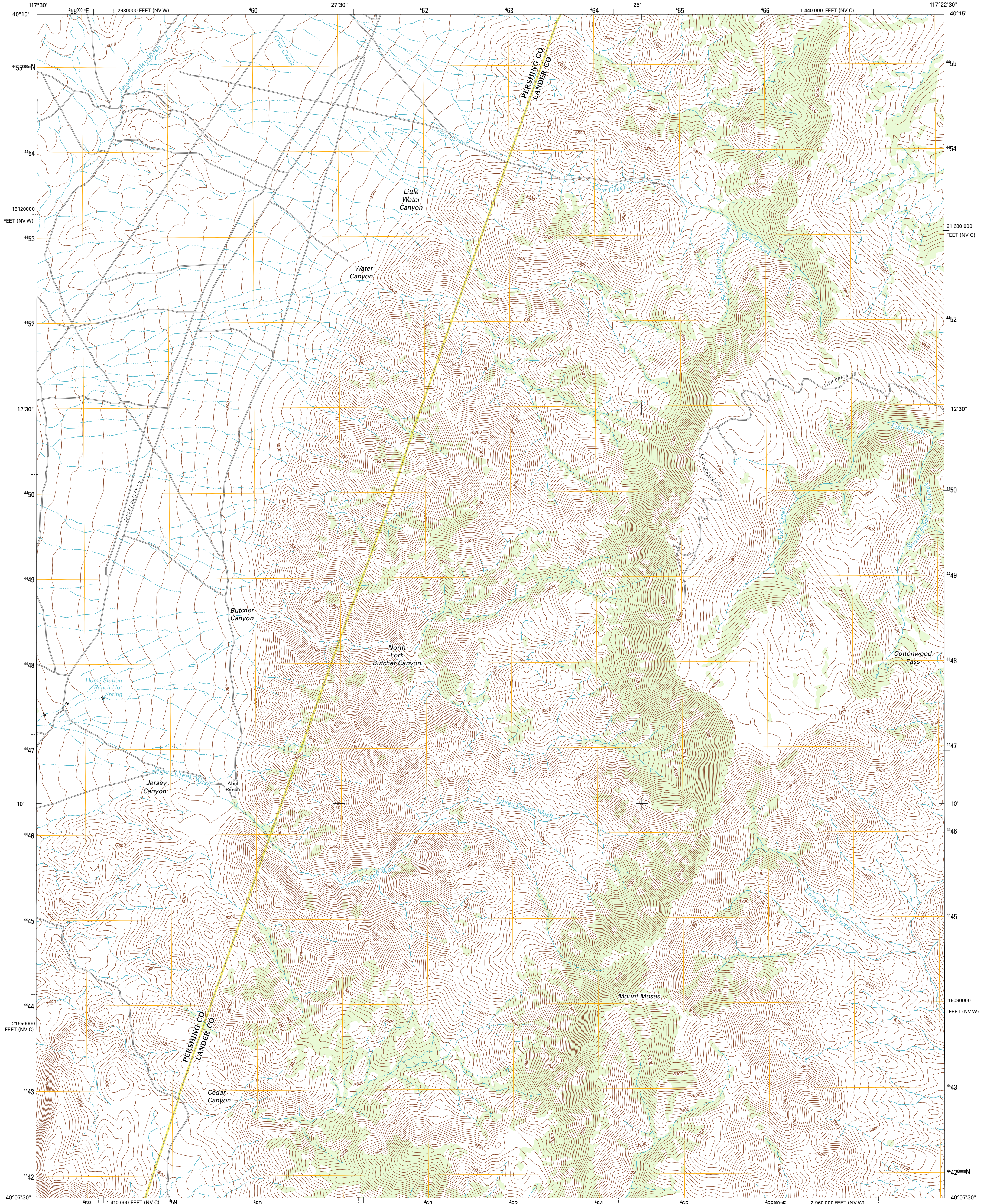




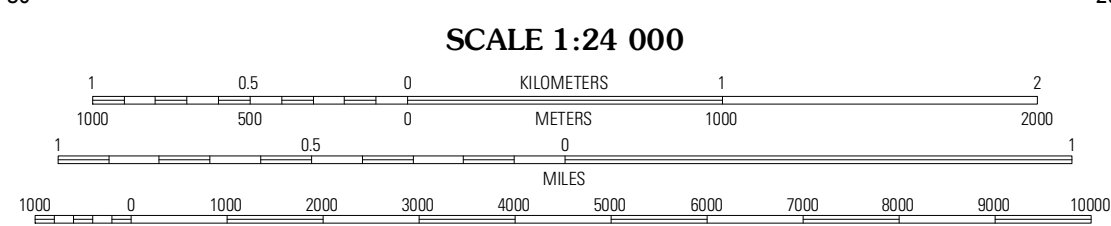
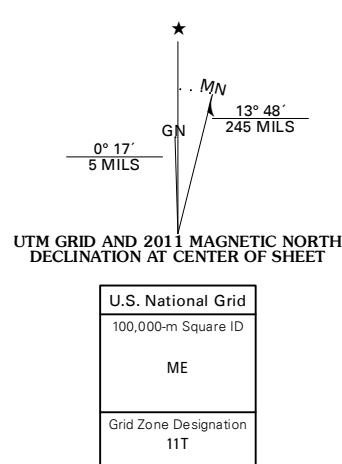
U.S. DEPARTMENT OF THE INTERIOR  
U. S. GEOLOGICAL SURVEY



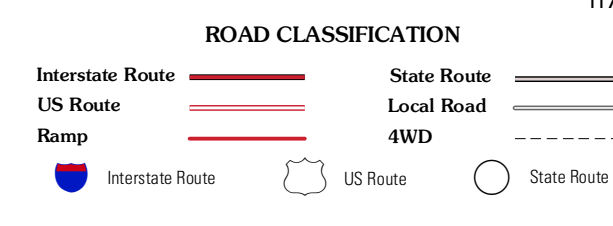
MOUNT MOSES QUADRANGLE  
NEVADA  
7.5-MINUTE SERIES



Produced by the United States Geological Survey  
North American Datum of 1983 (NAD83)  
World Geodetic System of 1984 (WGS84), Projection and  
1 000-meter grid; Universal Transverse Mercator, Zone 11T  
10 000-foot ticks: Nevada Coordinate System of 1983  
(central and west zones)



CONTOUR INTERVAL 40 FEET  
NORTH AMERICAN VERTICAL DATUM OF 1988  
This map was produced to conform with the  
National Geospatial Program US Topo Product Standard, 2011.  
A metadata file associated with this product is draft version 0.6.1



QUADRANGLE LOCATION

Needle Peak	Jersey Summit	Wild Range Canyon
Home Station Ranch	Mount Moses	Fish Creek Basin
Cain Mountain	Home Station Gap	Mount Moses SE

MOUNT MOSES, NV  
2011

ADJOINING 7.5' QUADRANGLES