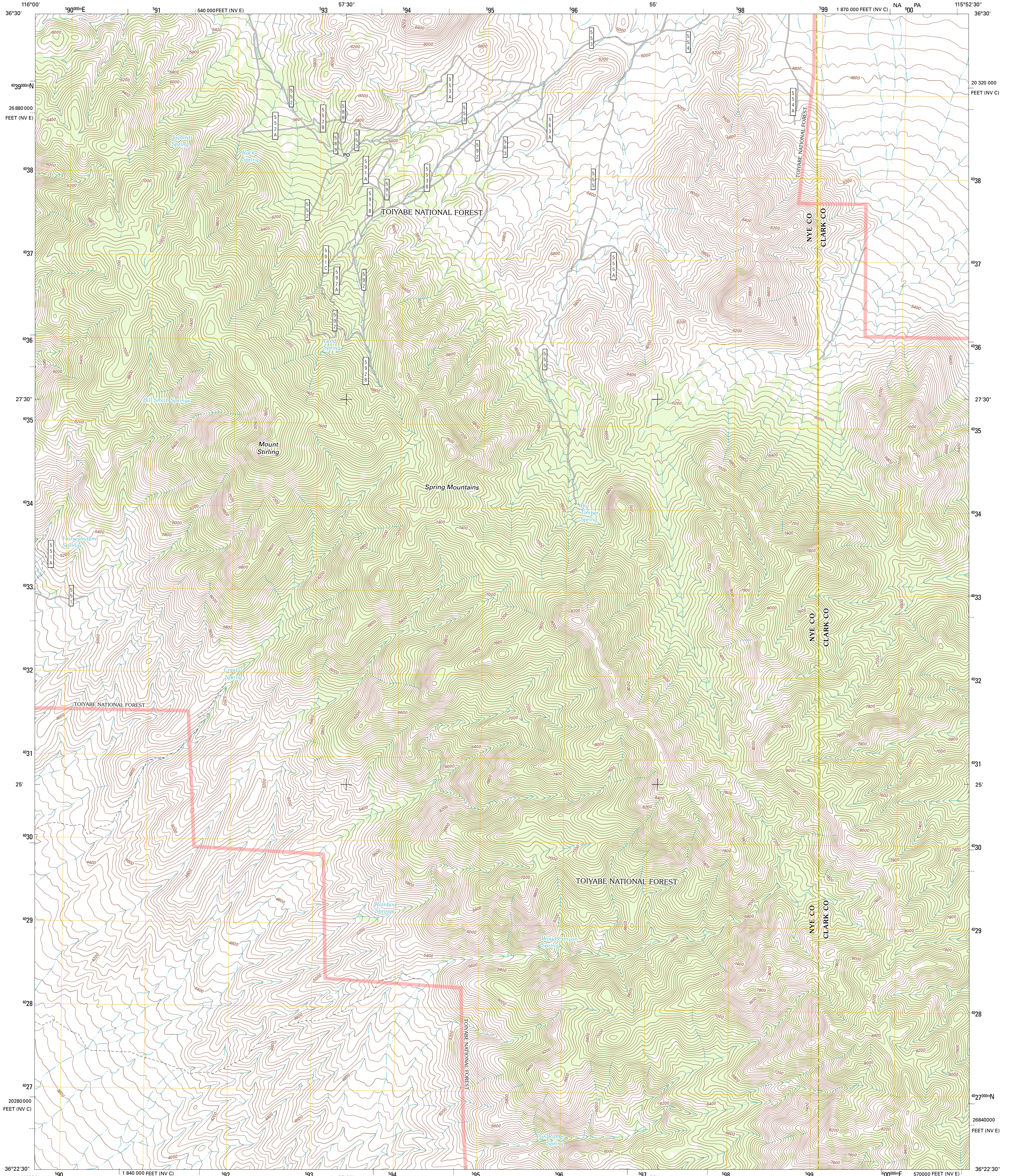




U.S. DEPARTMENT OF THE INTERIOR
U. S. GEOLOGICAL SURVEY

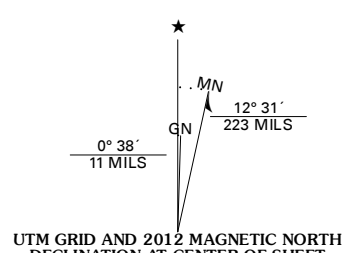


MOUNT STIRLING QUADRANGLE
NEVADA
7.5-MINUTE SERIES

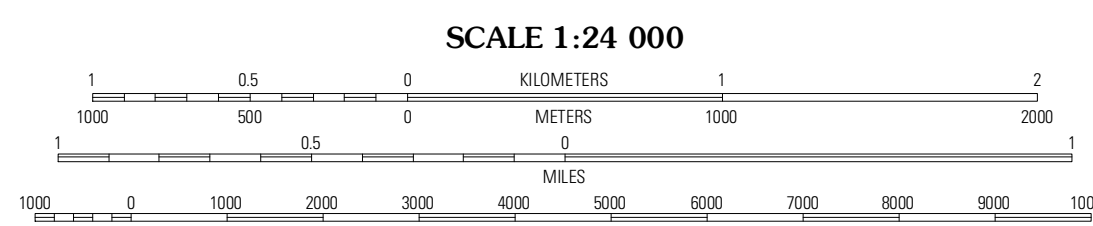


Produced by the United States Geological Survey
North American Datum of 1983 (NAD83)
World Geospatial System of 1984 (WGS84). Projection and
1 000-foot ticks: Universal Transverse Mercator, Zone 11S
10 000-foot ticks: Nevada Coordinate System of 1983
(central and east zones)

Imagery: N.A.I.P., July 2010
Roads: 2006-2011 TomTom
Roads within US Forest Service Lands: FSTopo Data
with limited Forest Service updates, 2009
Names: G.N.S., 2011
Hydrography: National Hydrography Dataset, 2010
Contours: National Elevation Dataset, 2001
Boundaries: Census, IBWC, IBC, USGS, 1972 - 2010



U.S. National Grid
100,000-m Square ID
NA PA
Grid Zone Designation
11S



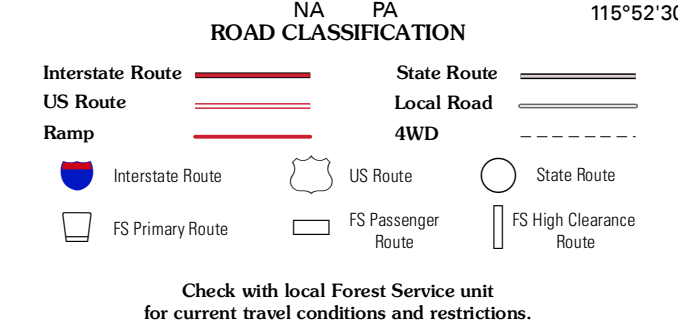
CONTOUR INTERVAL 40 FEET
NORTH AMERICAN VERTICAL DATUM OF 1988
This map was produced to conform with the
National Geospatial Program US Topo Product Standard, 2011.
A metadata file associated with this product is draft version 0.6.1



QUADRANGLE LOCATION

Point of Rocks	Nash Wash	Mercury SE
Mount Schader	Mount Stirling	Willow Peak
Last Chance Range	Horse Springs	Wheeler Well

ADJOINING 7.5 QUADRANGLES



Check with local Forest Service unit
for current travel conditions and restrictions.

MOUNT STIRLING, NV
2012