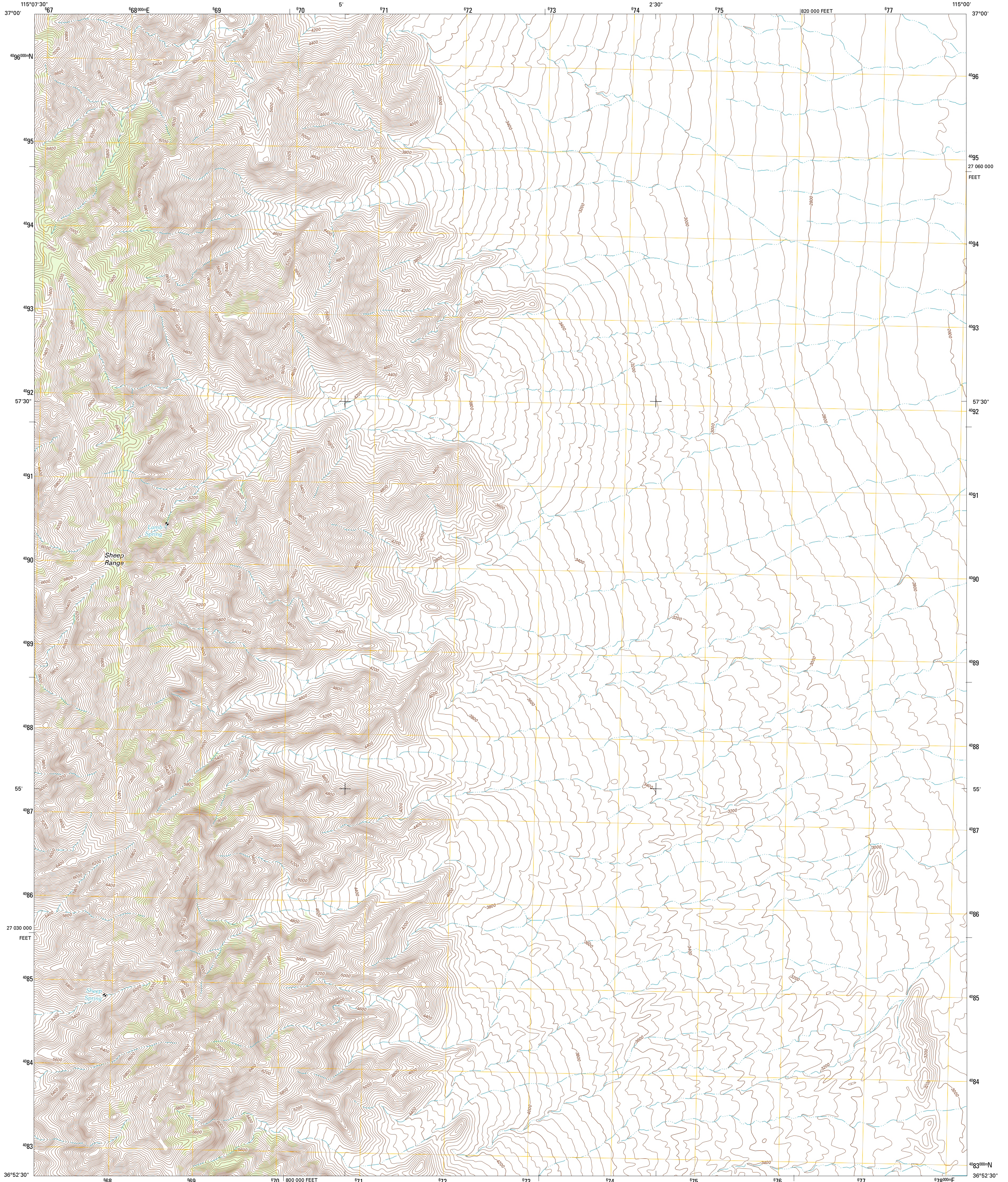




U.S. DEPARTMENT OF THE INTERIOR
U. S. GEOLOGICAL SURVEY

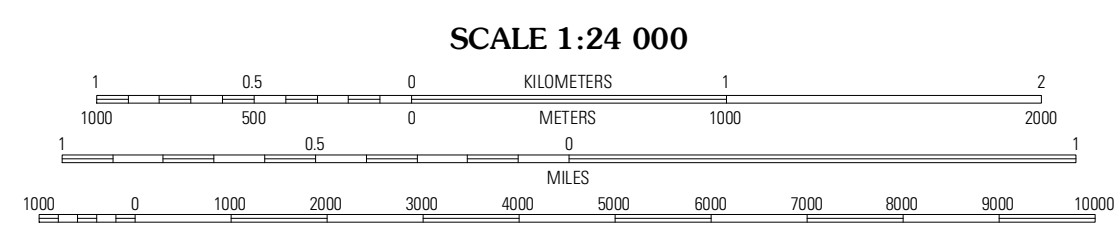
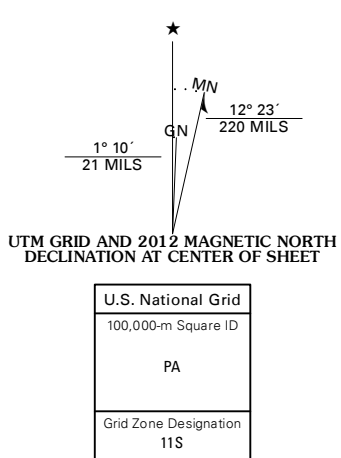


MULE DEER RIDGE NE QUADRANGLE
NEVADA-LINCOLN CO.
7.5-MINUTE SERIES

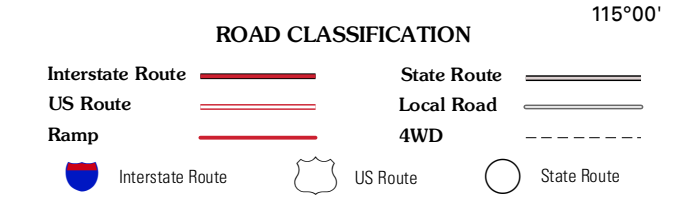


Produced by the United States Geological Survey
North American Datum of 1983 (NAD83)
World Geodetic System of 1984 (WGS84) Projection and
1 000-meter grid: Universal Transverse Mercator, Zone 11S
10 000-foot ticks: Nevada Coordinate System of 1983 (east zone)

Imagery.....NAIP, July 2010
Roads.....©2006-2011 TomTom
Names.....GNIS, 2011
Hydrography.....National Hydrography Dataset, 2010
Contours.....National Elevation Dataset, 2005
Boundaries.....Census, IBWC, IBC, USGS, 1972 - 2010



CONTOUR INTERVAL 40 FEET
NORTH AMERICAN VERTICAL DATUM OF 1988
This map was produced to conform with the
National Geospatial Program US Topo Product Standard, 2011.
A metadata file associated with this product is draft version 0.6.1



QUADRANGLE LOCATION

| | | |
|--------------------------------|--------------------------------|--------------------|
| Lower Pahranagat Lake SW | Lower Pahranagat Lake SE | Pahranagat Wash |
| Mule Deer Ridge NW | Mule Deer Ridge NE | Wildcat Wash NW |
| Mule Deer Ridge | Mule Deer Ridge SE | Wildcat Wash SW |

MULE DEER RIDGE NE, NV
2012

ADJOINING 7.5' QUADRANGLES