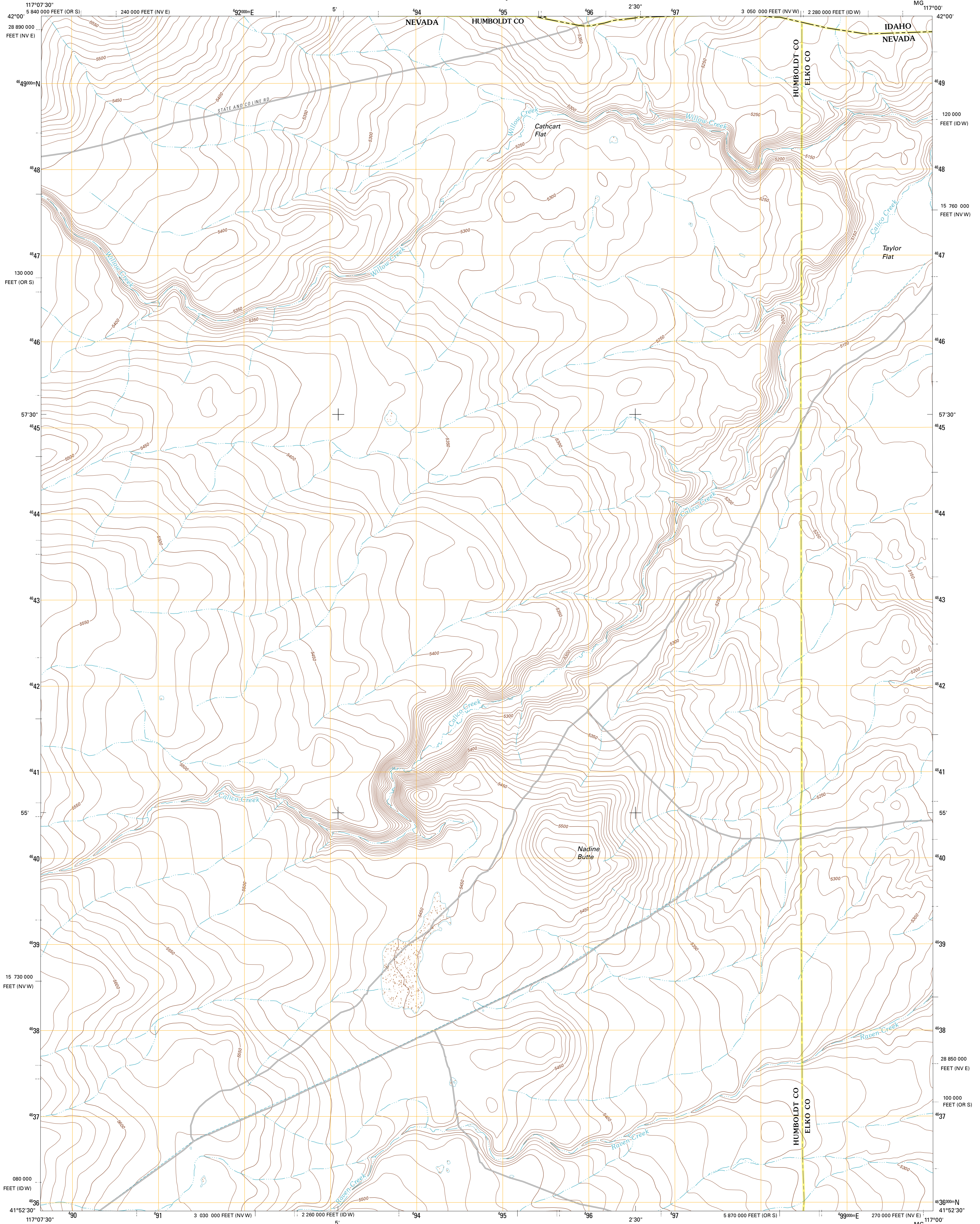




U.S. DEPARTMENT OF THE INTERIOR
U. S. GEOLOGICAL SURVEY

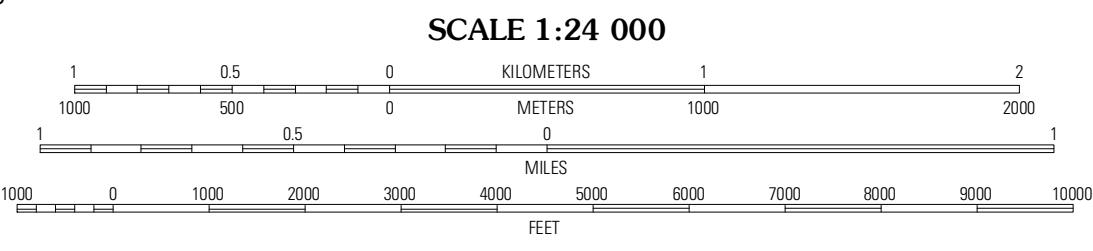
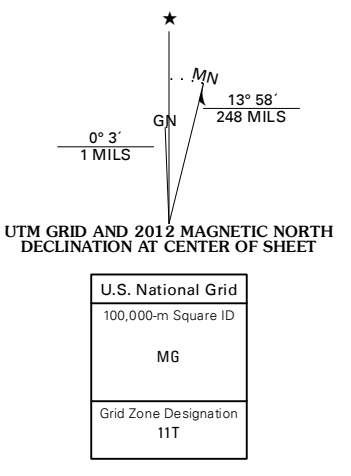


NADINE BUTTE QUADRANGLE
NEVADA-IDAHO-OREGON
7.5-MINUTE SERIES



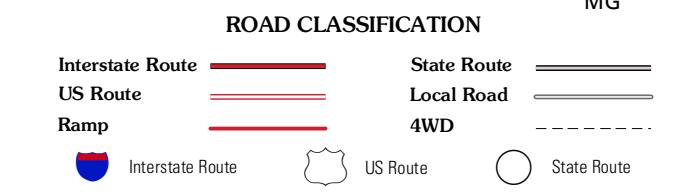
Produced by the United States Geological Survey
North American Datum of 1983 (NAD83)
World Geodetic System of 1984 (WGS84). Projection and
1 000-meter grid: Universal Transverse Mercator, Zone 11T
10 000-foot ticks: Nevada Coordinate System of 1983 (west
and east zones), Idaho Coordinate System of 1983 (west
zone), Oregon Coordinate System of 1983 (south zone)

Imagery.....NAP, July 2010
Roads.....©2006-2011 TomTom
Names.....GNS, 2011
Hydrography.....National Hydrography Dataset, 2010
Contours.....National Elevation Dataset, 2002
Boundaries.....Census, IBW, IBC, USGS, 1972 - 2010



CONTOUR INTERVAL 10 FEET
NORTH AMERICAN VERTICAL DATUM OF 1988

This map was produced to conform with the National Geospatial Program US Topo Product Standard, 2011. A metadata file associated with this product is draft version 0.6.1



QUADRANGLE LOCATION

Locknest Lake	Star Valley Knoll	Star Valley
Calico Butte	Nadine Butte	Star Valley Ridge West
Malden Butte	Malden Butte SE	Star Valley Ridge SW

NADINE BUTTE, NV-ID-OR
2012