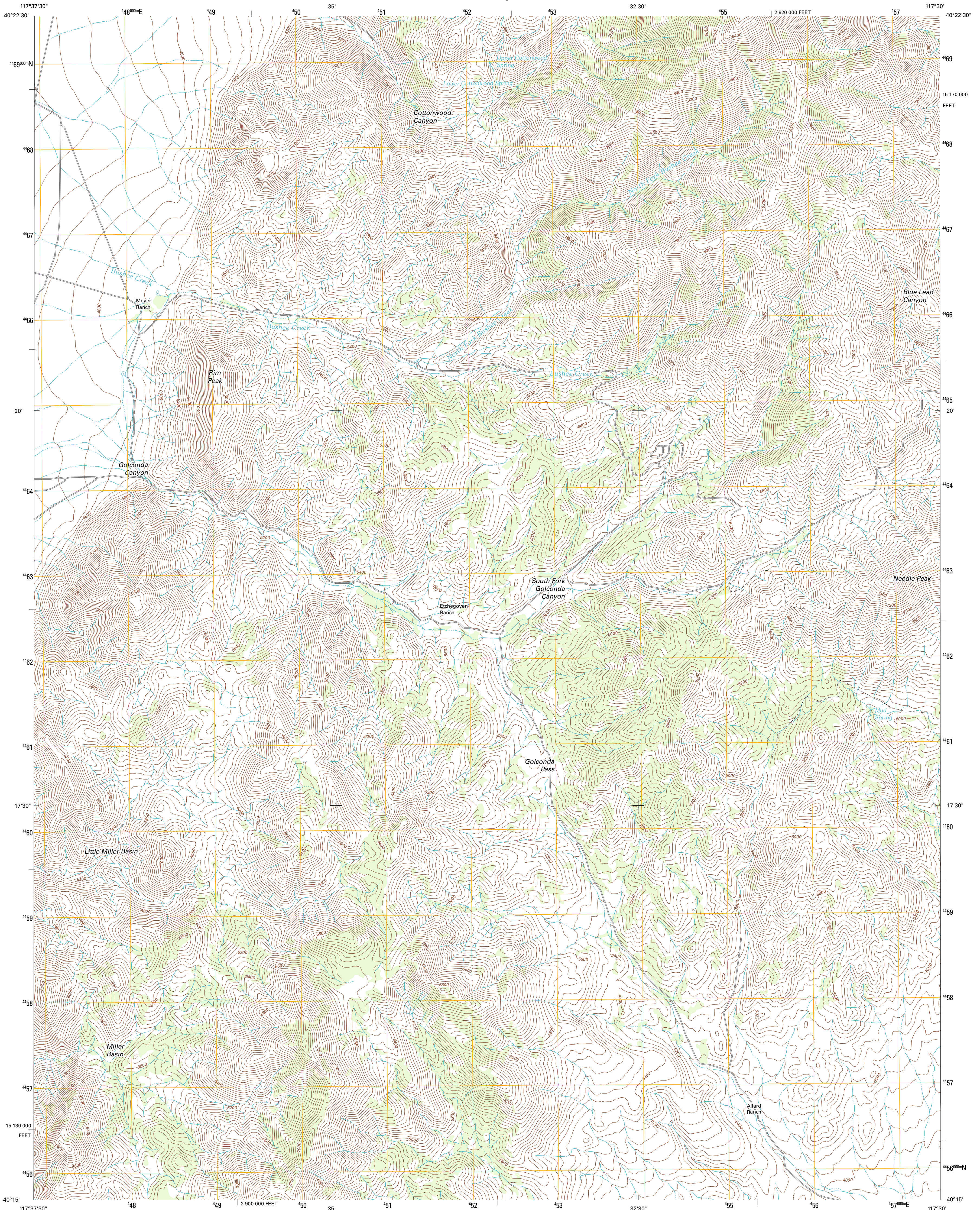




U.S. DEPARTMENT OF THE INTERIOR
U. S. GEOLOGICAL SURVEY

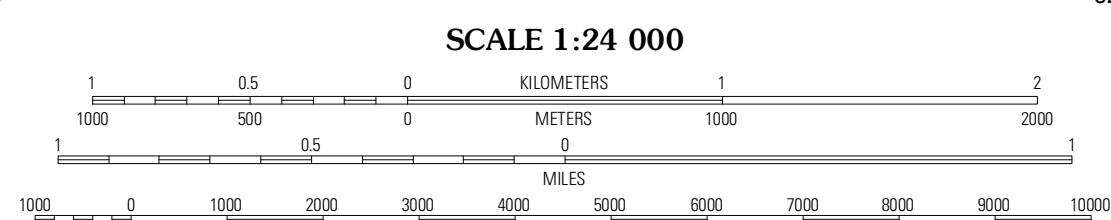
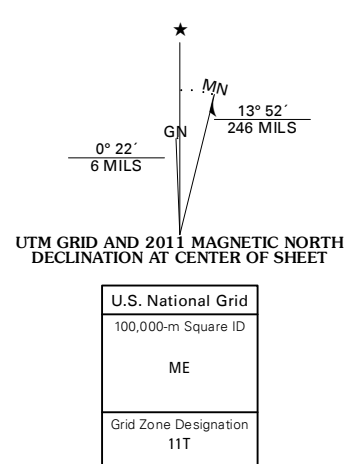


NEEDLE PEAK QUADRANGLE
NEVADA-PERSHING CO.
7.5-MINUTE SERIES



Produced by the United States Geological Survey
North American Datum of 1983 (NAD83)
World Geodetic System of 1984 (WGS84). Projection and
1 000-meter grid: Universal Transverse Mercator, Zone 11T
10 000-foot ticks: Nevada Coordinate System of 1983 (west
zone)

Imagery.....N.A.P., June 2010
Roads.....©2006-2011 TomTom
Names.....GNIS, 2011
Hydrography.....National Hydrography Dataset, 2010
Contours.....National Elevation Dataset, 2001
Boundaries.....Census, IBWC, IBC, USGS, 1972 - 2010



CONTOUR INTERVAL 40 FEET
NORTH AMERICAN VERTICAL DATUM OF 1988

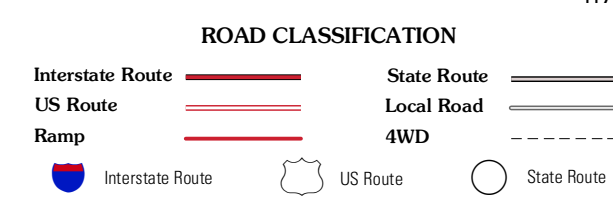
This map was produced to conform with the
National Geospatial Program US Topo Product Standard, 2011.
A metadata file associated with this product is draft version 0.6.1



QUADRANGLE LOCATION

Goldbanks Hills	Mount Tobin	Buffalo Springs
Kennedy Canyon	Needle Peak	Jersey Summit
Sou Hills	Home Station Ranch	Mount Moses

ADJOINING 7.5 QUADRANGLES



NEEDLE PEAK, NV
2011