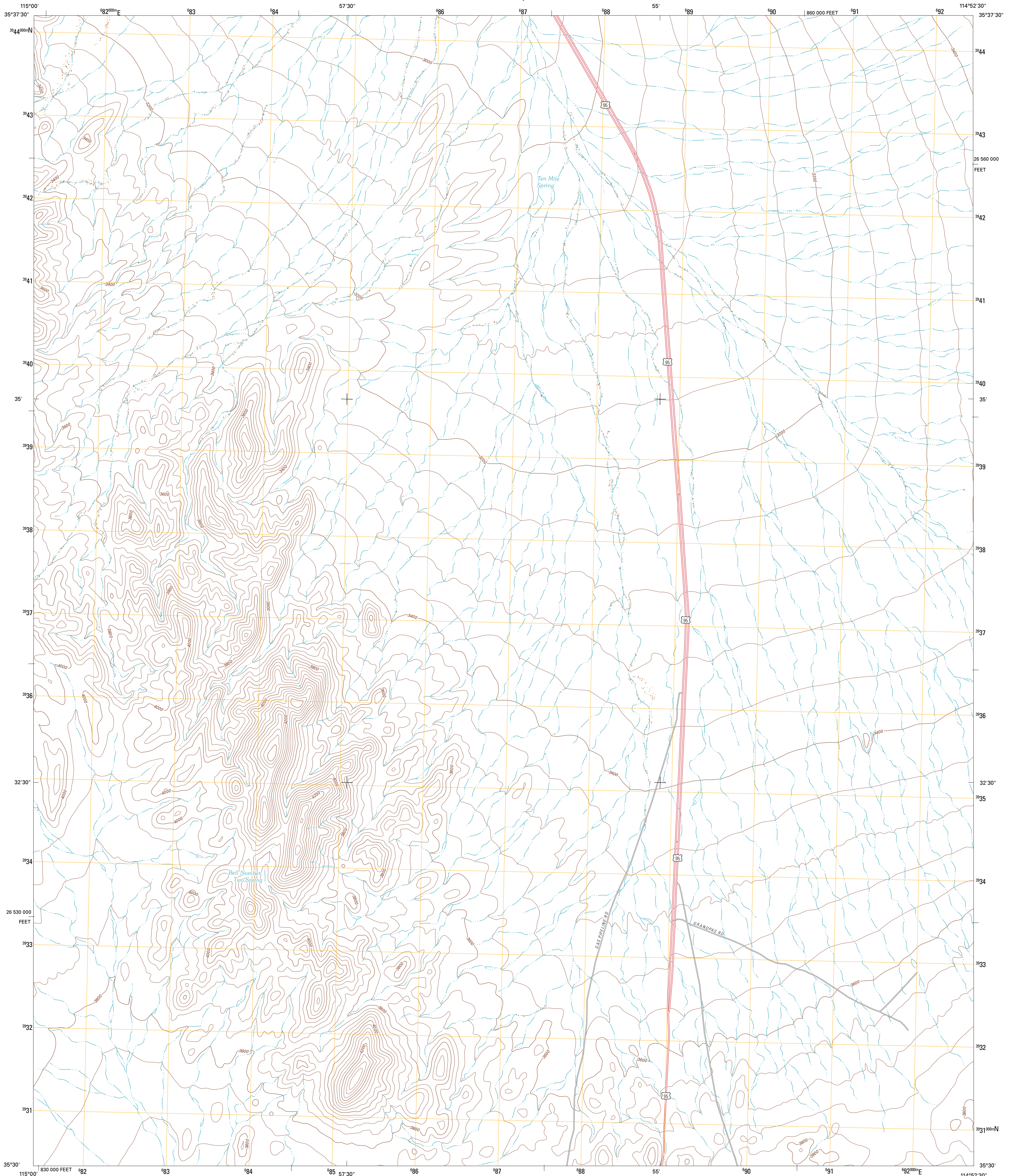




U.S. DEPARTMENT OF THE INTERIOR
U. S. GEOLOGICAL SURVEY



NELSON SW QUADRANGLE
NEVADA-CLARK CO.
7.5-MINUTE SERIES

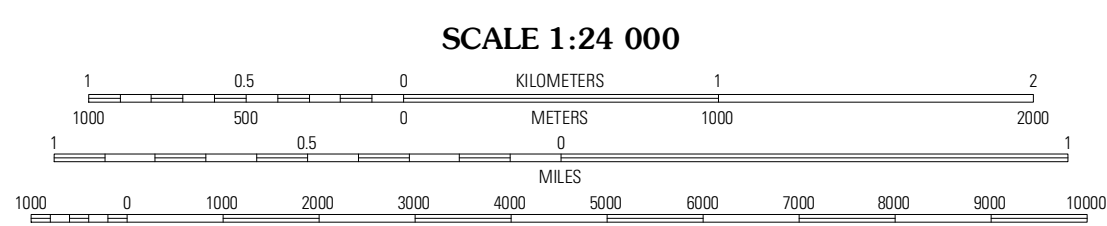


Produced by the United States Geological Survey
North American Datum of 1983 (NAD83)
World Geodetic System of 1984 (WGS84). Projection and
1 000-meter grid: Universal Transverse Mercator, Zone 11S
10 000-foot ticks: Nevada Coordinate System of 1983 (east
zone)

UTM GRID AND 2012 MAGNETIC NORTH DECLINATION AT CENTER OF SHEET

U.S. National Grid
300,000-m Square ID
PV
Grid Zone Designation
11S

Magnetic North Declination: 12° 5' 12" N



CONTOUR INTERVAL 40 FEET
NORTH AMERICAN VERTICAL DATUM OF 1988

This map was produced to conform with the
National Geospatial Program US Topo Product Standard, 2011.
A metadata file associated with this product is draft version 0.6.1

NEVADA

QUADRANGLE LOCATION

McCullough Mountain NE	Keyhole Canyon	Nelson
Highland Spring	Nelson SW	Inteba Peaks
Hoppers Well	Searchlight	Fourth of July Mountain

ADJOINING 7.5 QUADRANGLES

ROAD CLASSIFICATION

Interstate Route	State Route
US Route	Local Road
Ramp	4WD

Legend symbols for Interstate Route, US Route, Ramp, State Route, Local Road, and 4WD.

NELSON SW, NV
2012