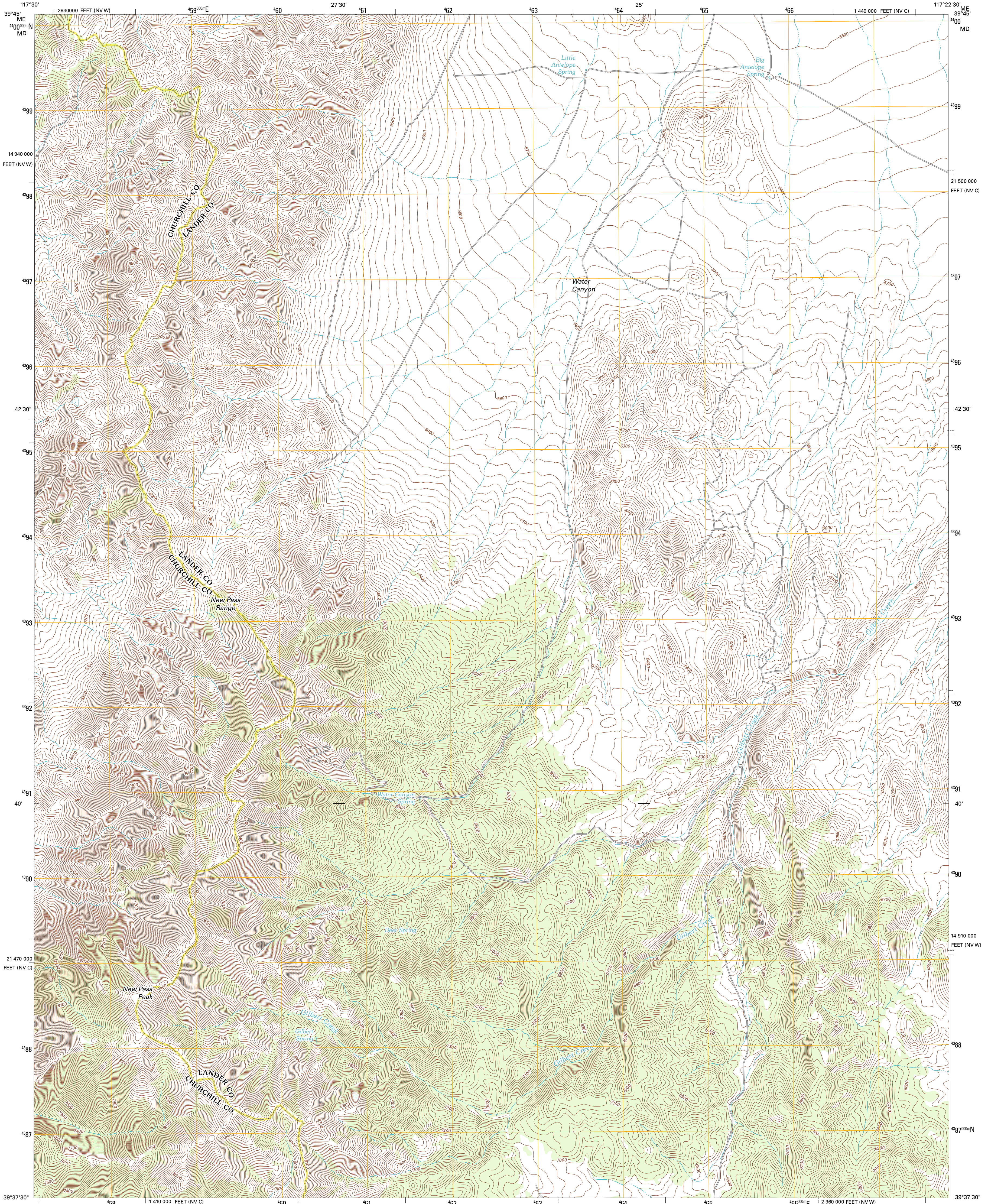




U.S. DEPARTMENT OF THE INTERIOR  
U. S. GEOLOGICAL SURVEY

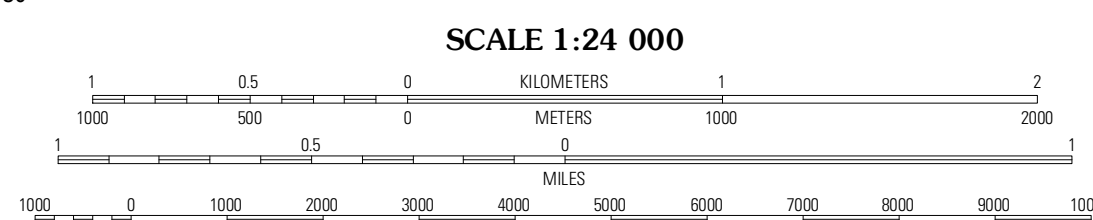
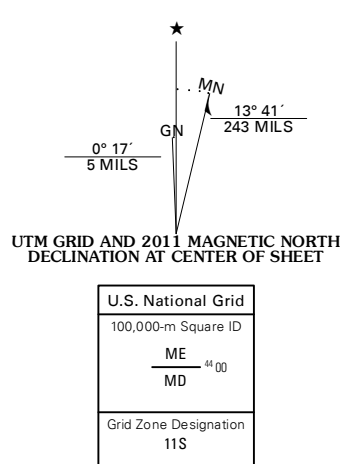


NEW PASS PEAK QUADRANGLE  
NEVADA  
7.5-MINUTE SERIES

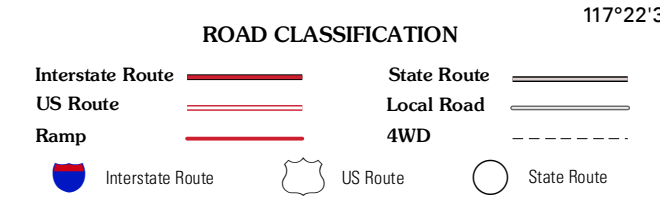


Produced by the United States Geological Survey  
North American Datum of 1983 (NAD83)  
World Geodetic System of 1984 (WGS84). Projection and  
1 000-meter grid: Universal Transverse Mercator, Zone 11S  
10 000-foot ticks: Nevada Coordinate System of 1983  
(central and west zones)

Imagery.....NAIP, June 2010  
Roads.....©2006-2011 TeamTm  
Names.....GNIS, 2011  
Hydrography.....National Hydrography Dataset, 2010  
Contours.....National Elevation Dataset, 1999  
Boundaries.....Census, IBWC, IBC, USGS, 1972 - 2010



CONTOUR INTERVAL 20 FEET  
NORTH AMERICAN VERTICAL DATUM OF 1988  
This map was produced to conform with the  
National Geospatial Program US Topo Product Standard, 2011.  
A metadata file associated with this product is draft version 0.6.1



QUADRANGLE LOCATION

Shoshone Meadows SE	Gilbert Creek SW	Gilbert Creek SE
New Pass Well	New Pass Peak	Mount Arly NE
New Pass	Mount Arly	Mount Arly Mesa

NEW PASS PEAK, NV  
2011

ADJOINING 7.5 QUADRANGLES