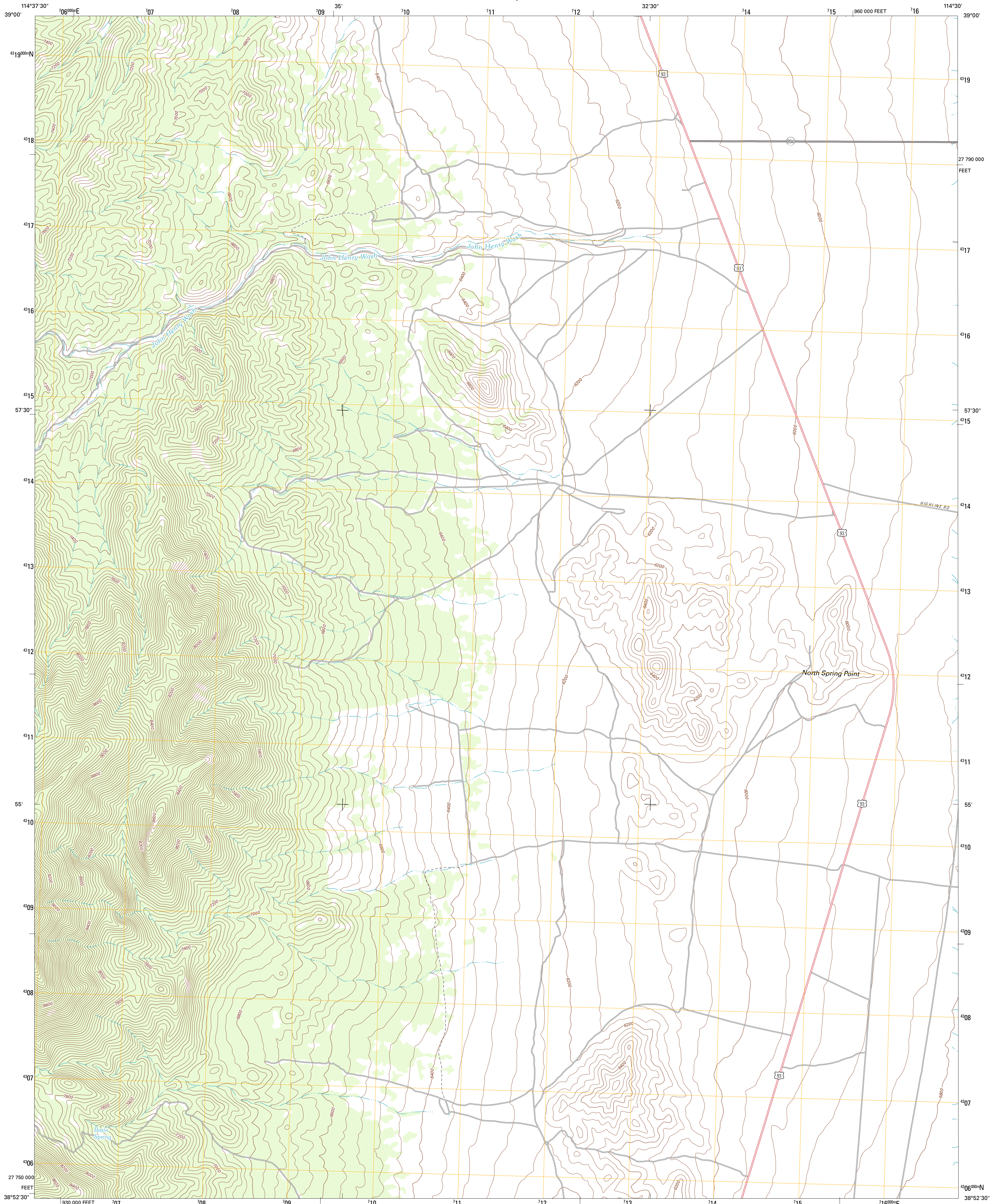




U.S. DEPARTMENT OF THE INTERIOR
U. S. GEOLOGICAL SURVEY

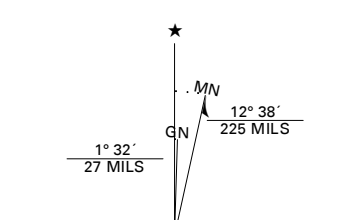


NORTH SPRING POINT QUADRANGLE
NEVADA-WHITE PINE CO.
7.5-MINUTE SERIES

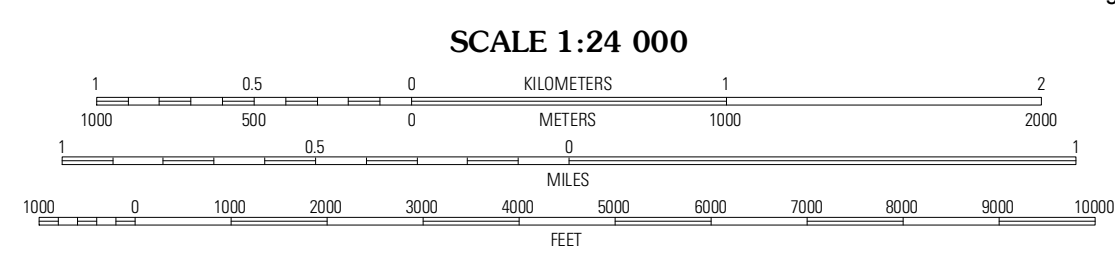


Produced by the United States Geological Survey
North American Datum of 1983 (NAD83)
World Geodetic System of 1984 (WGS84). Projection and
1 000-meter grid: Universal Transverse Mercator, Zone 11S
10 000-foot ticks: Nevada Coordinate System of 1983 (east
zone)

Imagery.....NAIP, June 2010
Roads.....©2006-2011 TomTom
Names.....©2011
Hydrography.....National Hydrography Dataset, 2010
Contours.....National Elevation Dataset, 2001
Boundaries.....Census, IBWC, IBC, USGS, 1972 - 2010



U.S. National Grid 100,000m Square ID
00
Grid Zone Designation 11S



CONTOUR INTERVAL 40 FEET
NORTH AMERICAN VERTICAL DATUM OF 1988

This map was produced to conform with the
National Geospatial Program US Topo Product Standard, 2011.
A metadata file associated with this product is draft version 0.6.1



QUADRANGLE LOCATION

Combers Pass	Majors Place	Hogum
Horse Camp Springs	North Spring Point	Baking Powder Flat
Cattle Camp Spring	Lake Valley Summit	Minerva

ROAD CLASSIFICATION

Interstate Route	State Route
US Route	Local Road
Ramp	4WD
Interstate Route	US Route
	State Route

NORTH SPRING POINT, NV
2012

ADJOINING 7.5' QUADRANGLES