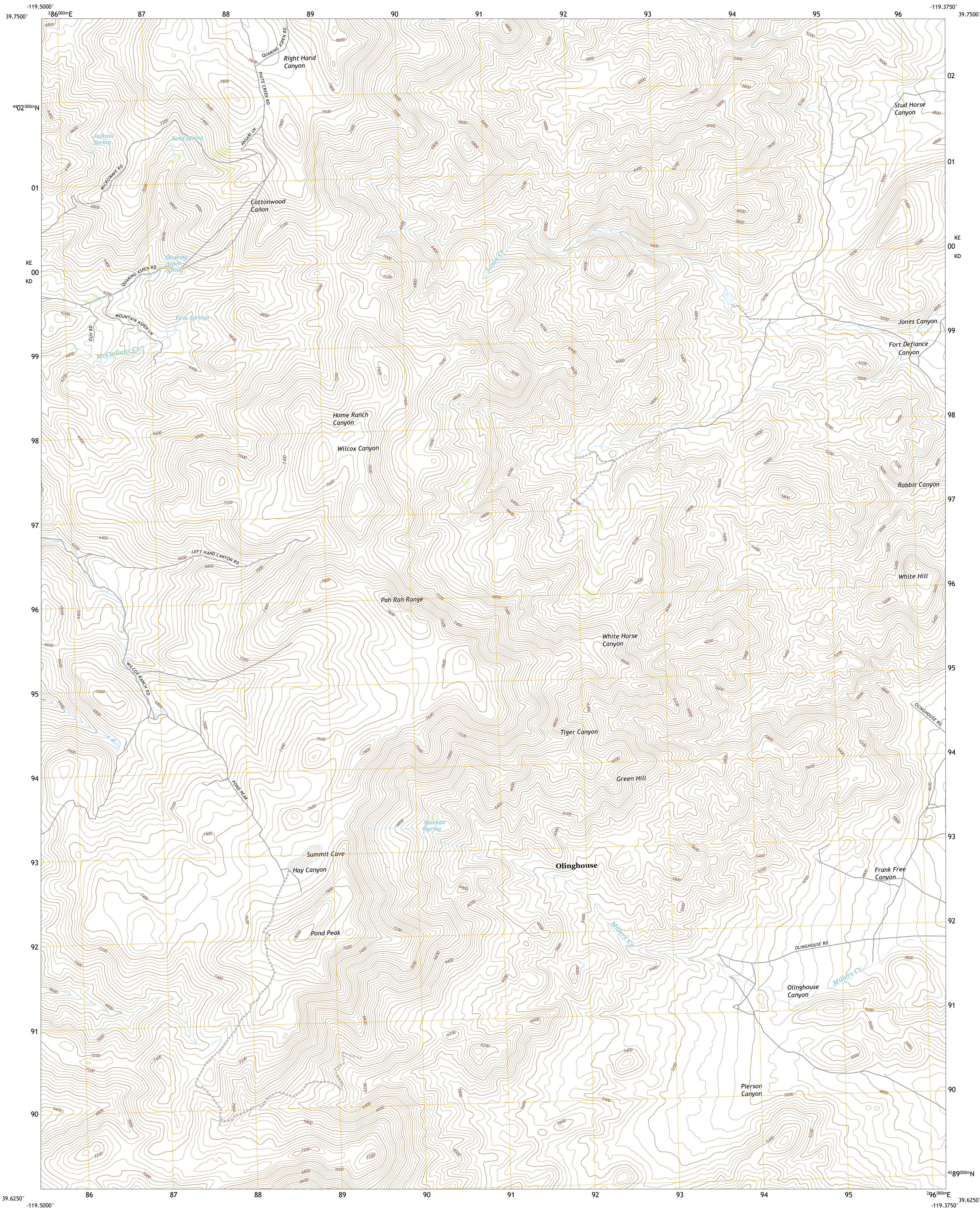




U.S. DEPARTMENT OF THE INTERIOR
U.S. GEOLOGICAL SURVEY



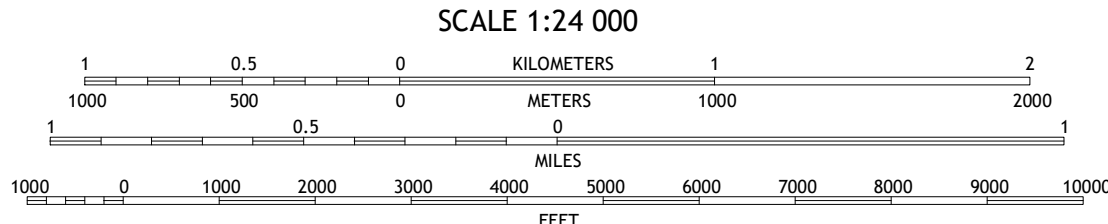
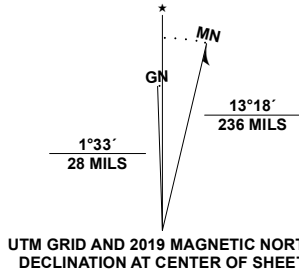
OLINGHOUSE QUADRANGLE
NEVADA - WASHOE COUNTY
7.5-MINUTE SERIES



Produced by the United States Geological Survey

North American Datum of 1983 (NAD83)
World Geodetic System of 1984 (WGS84). Projection and
1 000-meter grid/Universal Transverse Mercator, Zone 11S
This map is not a legal document. Boundaries may be
generalized for this map scale. Private lands within government
reservations may not be shown. Obtain permission before
entering private lands.

Imagery.....NAIP, June 2017 - November 2017
Roads.....U.S. Census Bureau, 2018
Names.....GNIS, 1980-2018
Hydrography.....National Hydrography Dataset, 2005 - 2021
Contours.....National Elevation Dataset, 2001
Boundaries.....Multiple sources: see metadata file, 2019 - 2021
Public Land Survey System.....BLM, 2020
Wetlands.....FWS National Wetlands Inventory, 2013



CONTOUR INTERVAL 40 FEET
NORTH AMERICAN VERTICAL DATUM OF 1988
This map was produced to conform with the
National Geospatial Program US Topo Product Standard.



1	2	3
4	5	6
7	8	9

- 1 Moses Rock
- 2 Pah Rah Mountain
- 3 Nixon
- 4 Spanish Springs Peak
- 5 Wadsworth
- 6 Patrick
- 7 Derby Dam
- 8 Ferriley West

ROAD CLASSIFICATION	
Expressway	Local Connector
Secondary Hwy	Local Road
Ramp	4WD
Interstate Route	US Route
	State Route

OLINGHOUSE, NV
2021

