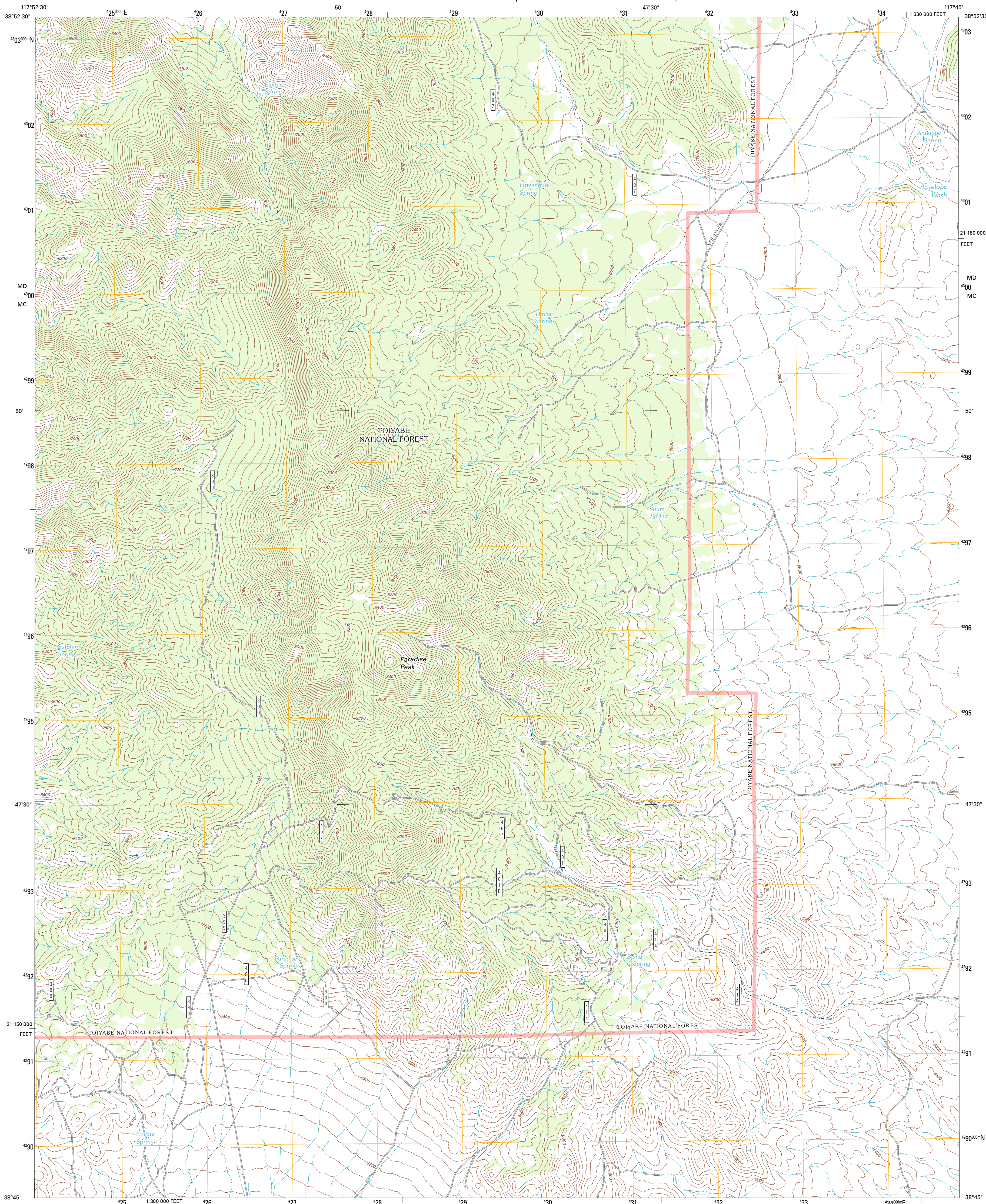




U.S. DEPARTMENT OF THE INTERIOR
U.S. GEOLOGICAL SURVEY

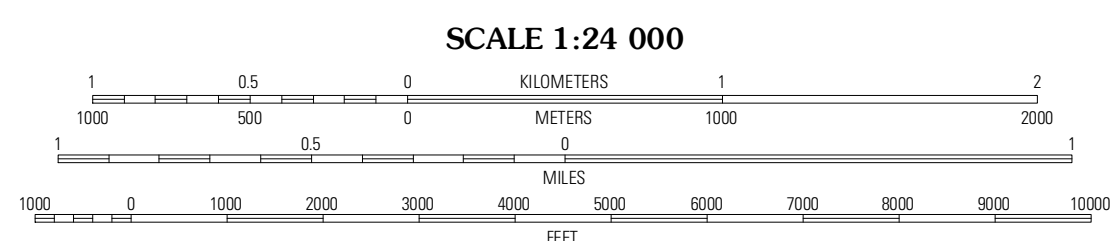
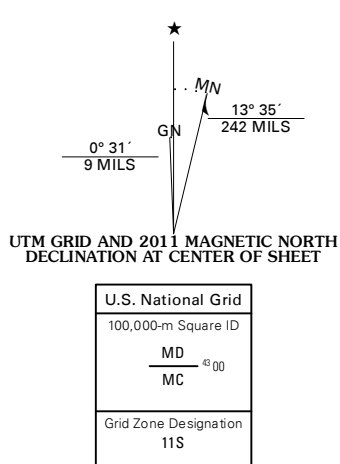


PARADISE PEAK QUADRANGLE
NEVADA-NYE CO.
7.5-MINUTE SERIES

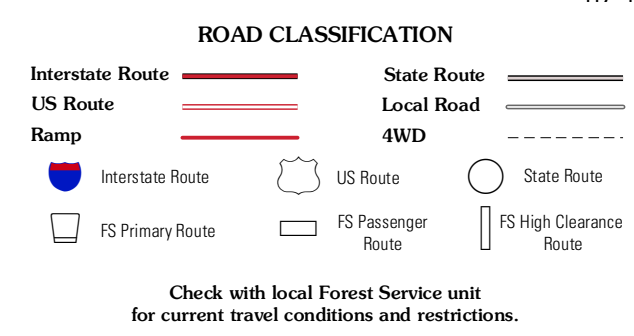
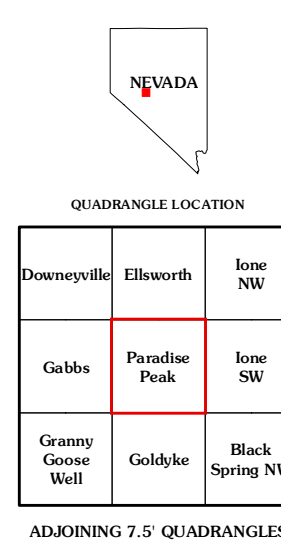


Produced by the United States Geological Survey
North American Datum of 1983 (NAD83)
World Geodetic System of 1984 (WGS84). Projection and
1 000-meter grid: Universal Transverse Mercator, Zone 11S
10 000-foot ticks: Nevada Coordinate System of 1983
(central zone)

Imagery: N.A.I.P., June 2010
Roads: 2006-2011 TomTom
Roads within US Forest Service Lands: FSTopo Data
with limited Forest Service updates, 2009
Names: GNS, 2011
Hydrography: National Hydrography Dataset, 2010
Contours: National Elevation Dataset, 2003
Boundaries: Census, IBWC, IBC, USGS, 1972 - 2010



CONTOUR INTERVAL 40 FEET
NORTH AMERICAN VERTICAL DATUM OF 1988
This map was produced to conform with the
National Geospatial Program US Topo Product Standard, 2011.
A metadata file associated with this product is draft version 0.6.1



Check with local Forest Service unit
for current travel conditions and restrictions.

PARADISE PEAK, NV
2011

ADJOINING 7.5' QUADRANGLES