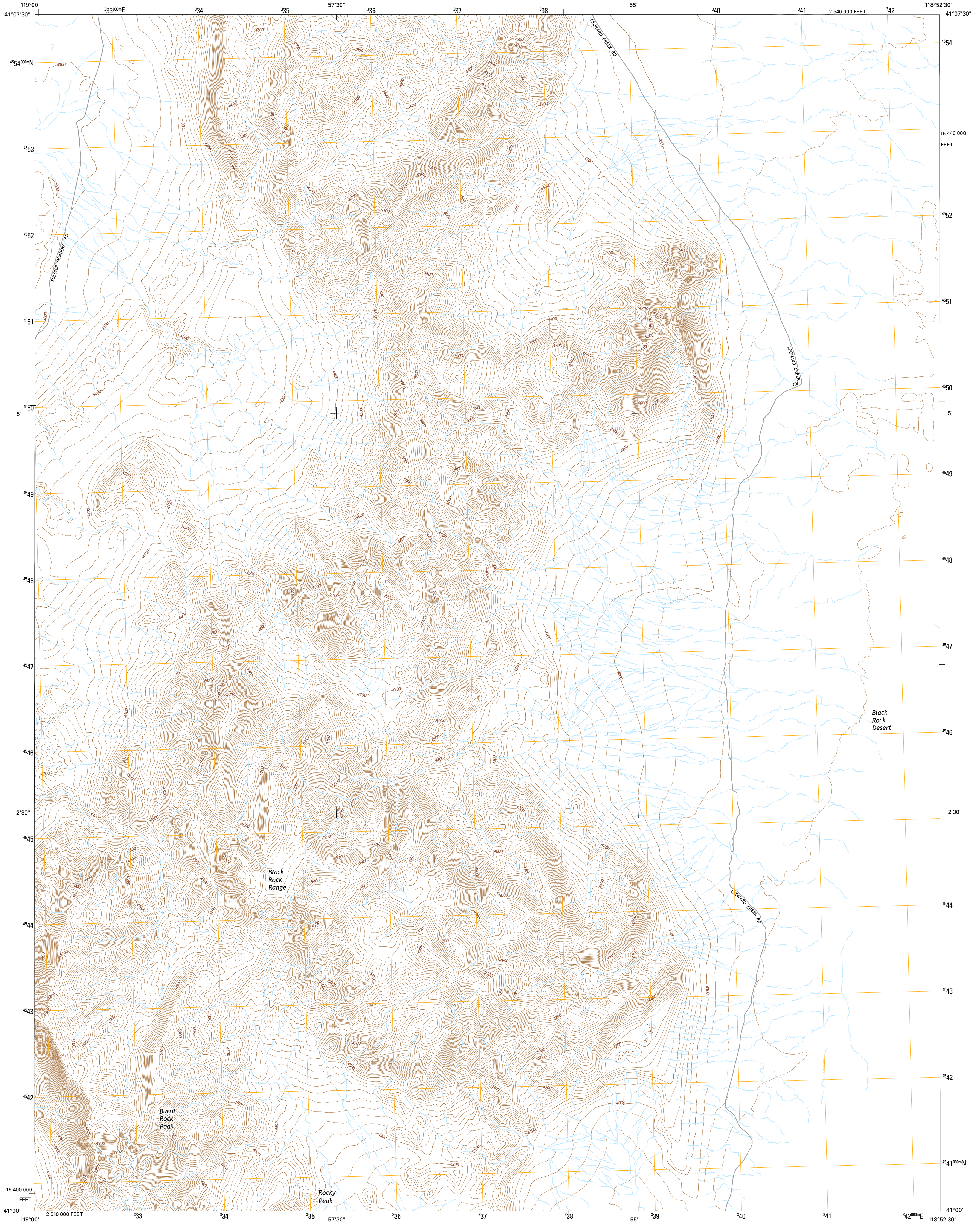




U.S. DEPARTMENT OF THE INTERIOR  
U.S. GEOLOGICAL SURVEY



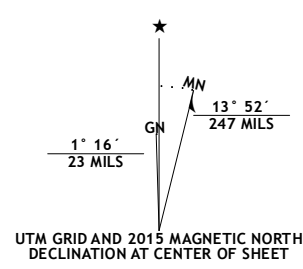
PIDGEEON SPRING SW QUADRANGLE  
NEVADA-HUMBOLDT CO.  
7.5-MINUTE SERIES



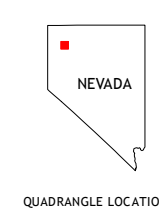
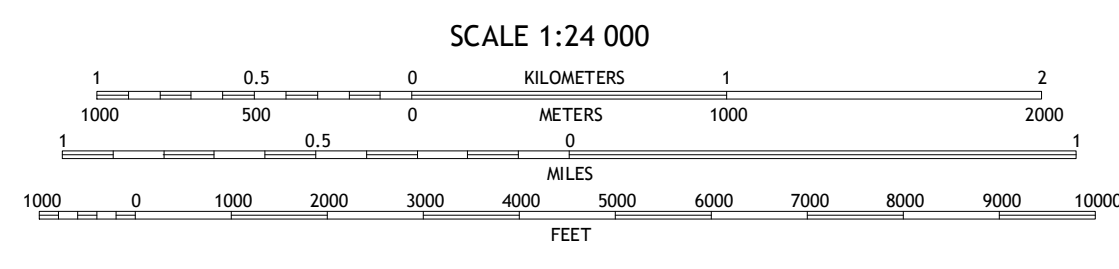
Produced by the United States Geological Survey  
North American Datum of 1983 (NAD83)  
World Geodetic System of 1984 (WGS84). Projection and  
1 000-meter grid: Universal Transverse Mercator, Zone 11T  
10 000-foot ticks: Nevada Coordinate System of 1983 (west  
zone)

This map is not a legal document. Boundaries may be  
generalized for this map scale. Private lands within government  
reservations may not be shown. Obtain permission before  
entering private lands.

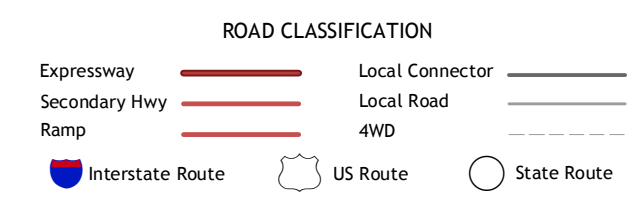
Imagery.....NAIP, July 2013  
Roads.....HERE, ©2013  
Names.....GNIS, 2013  
Hydrography.....National Hydrography Dataset, 2013  
Contours.....National Elevation Dataset, 2001  
Boundaries.....Multiple sources; see metadata file 1972 - 2014  
Public Land Survey System.....BLM, 2011



U.S. National Grid  
100,000 m Square ID  
LF  
Grid Zone Designation  
11T



QUADRANGLE LOCATION



1	2	3
4	5	6
7	8	

ADJOINING QUADRANGLES

- 1 Clapper Creek
- 2 Pidgeon Spring
- 3 Crowbar Spring
- 4 Double Hot Springs
- 5 Pidgeon Spring SE
- 6 Black Rock Point West
- 7 Black Rock Point East
- 8 Rabbithole NE

PIDGEEON SPRING SW, NV  
2015



NSN REF NO. U.S.G.S. X 2 4 K 3 5 0 5 7 4 7