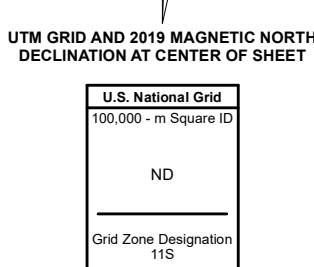
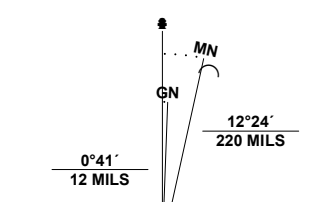


Produced by the United States Geological Survey

North American Datum of 1983 (NAD83) World Geodetic System of 1984 (WGS84) Projection and 1 000-meter grid/Universal Transverse Mercator, Zone 11S This map is not a legal document. Boundaries may be generalized for this map scale. Private lands within government reservations may not be shown. Obtain permission before entering private lands.

Imagery.....NAIP, June 2017 - November 2017  
Roads.....U.S. Census Bureau, 2016  
Names.....GNIS, 1980 - 2014  
Hydrography.....National Hydrography Dataset, 2006 - 2020  
Contours.....National Elevation Dataset, 2001  
Boundaries.....Multiple sources: see metadata file, 2019 - 2021  
Public Land Survey System.....BLM, 2020  
Wetlands.....FWS National Wetlands Inventory 1980 - 2015



CONTOUR INTERVAL 40 FEET NORTH AMERICAN VERTICAL DATUM OF 1988 This map was produced to conform with the National Geospatial Program US Topo Product Standard.



ADJOINING QUADRANGLES

|   |   |   |
|---|---|---|
| 1 | 2 | 3 |
| 4 | 5 | 6 |
| 7 | 8 |   |

- 1 Devon Peak
- 2 Eureka
- 3 Diamond Peak
- 4 Spring Valley Summit
- 5 Silverado Mountain
- 6 Bellevue Peak
- 7 Pinto Summit SW
- 8 Black Point

