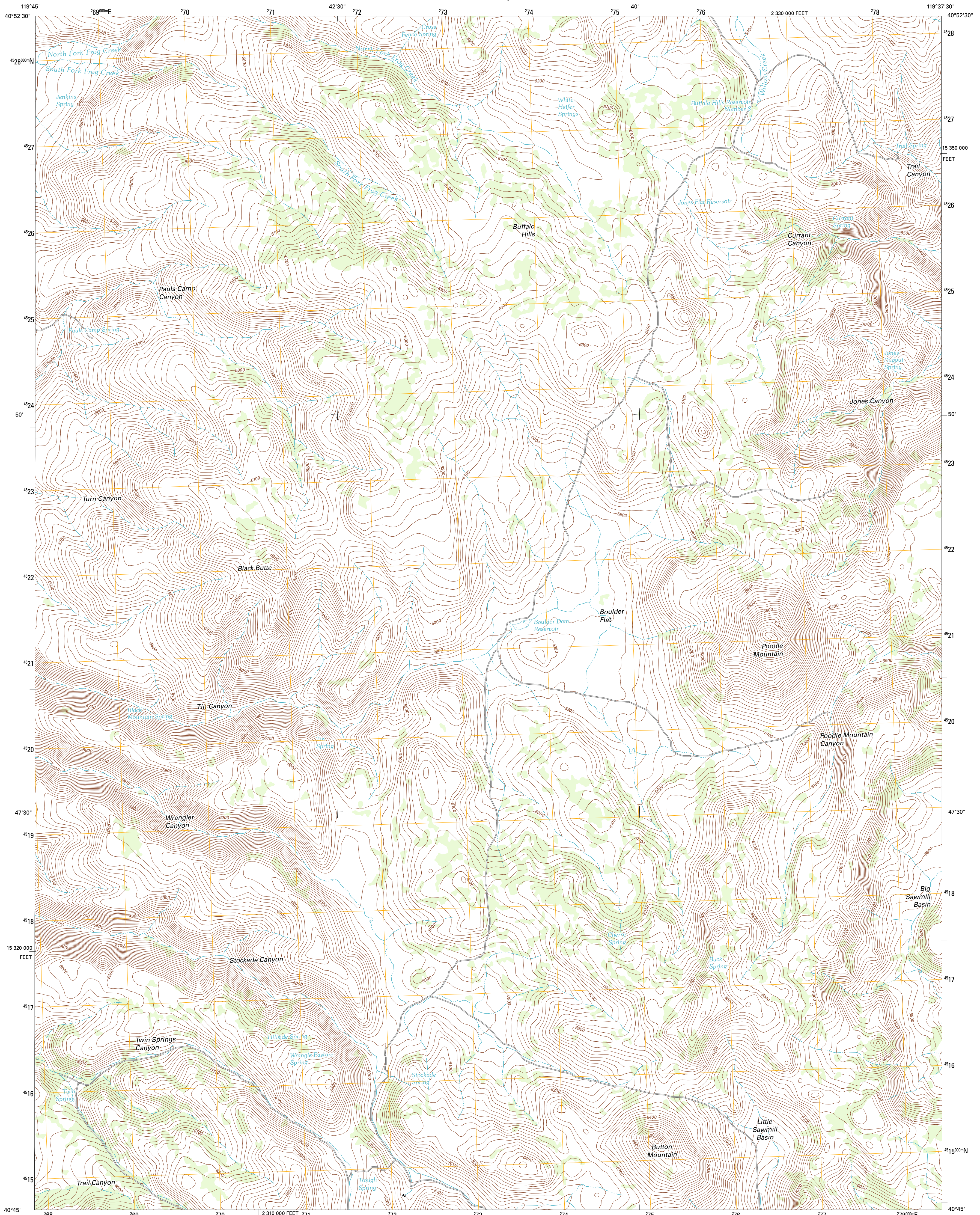




U.S. DEPARTMENT OF THE INTERIOR
U. S. GEOLOGICAL SURVEY

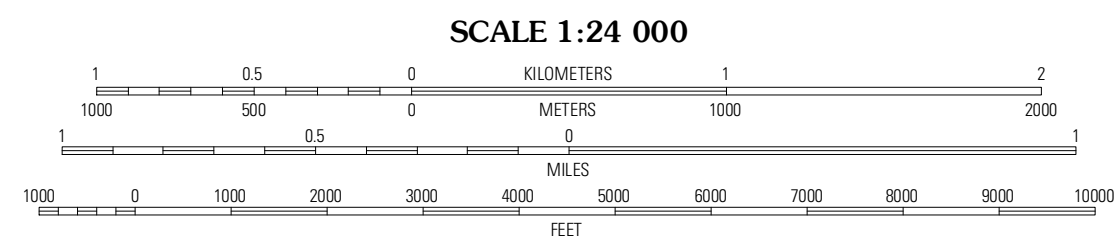
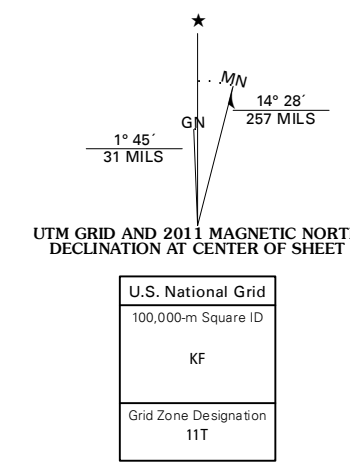


POODLE MOUNTAIN QUADRANGLE
NEVADA-WASHOE CO.
7.5-MINUTE SERIES



Produced by the United States Geological Survey
North American Datum of 1983 (NAD83)
World Geodetic System of 1984 (WGS84). Projection and
1 000-meter grid: Universal Transverse Mercator, Zone 11T
10 000-foot ticks: Nevada Coordinate System of 1983 (west zone)

Imagery:.....N.A.I.P., June 2010
Roads:.....©2006-2011 TomTom
Names:.....G.N.S., 2011
Hydrography:.....National Hydrography Dataset, 2010
Contours:.....National Elevation Dataset, 2001
Boundaries:.....Census, IBWC, IBC, USGS, 1972 - 2010



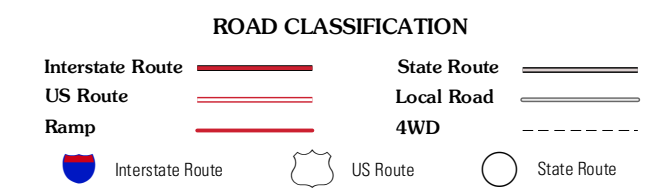
CONTOUR INTERVAL 20 FEET
NORTH AMERICAN VERTICAL DATUM OF 1988

This map was produced to conform with the
National Geospatial Program US Topo Product Standard, 2011.
A metadata file associated with this product is draft version 0.6.1



QUADRANGLE LOCATION

Rye Patch Canyon	Hillside Spring	Crutcher Canyon
Eddies Garden	Poodle Mountain	Squaw Valley
Buffalo Creek	Horse Canyon	Wall Spring



POODLE MOUNTAIN, NV
2011

ADJOINING 7.5 QUADRANGLES