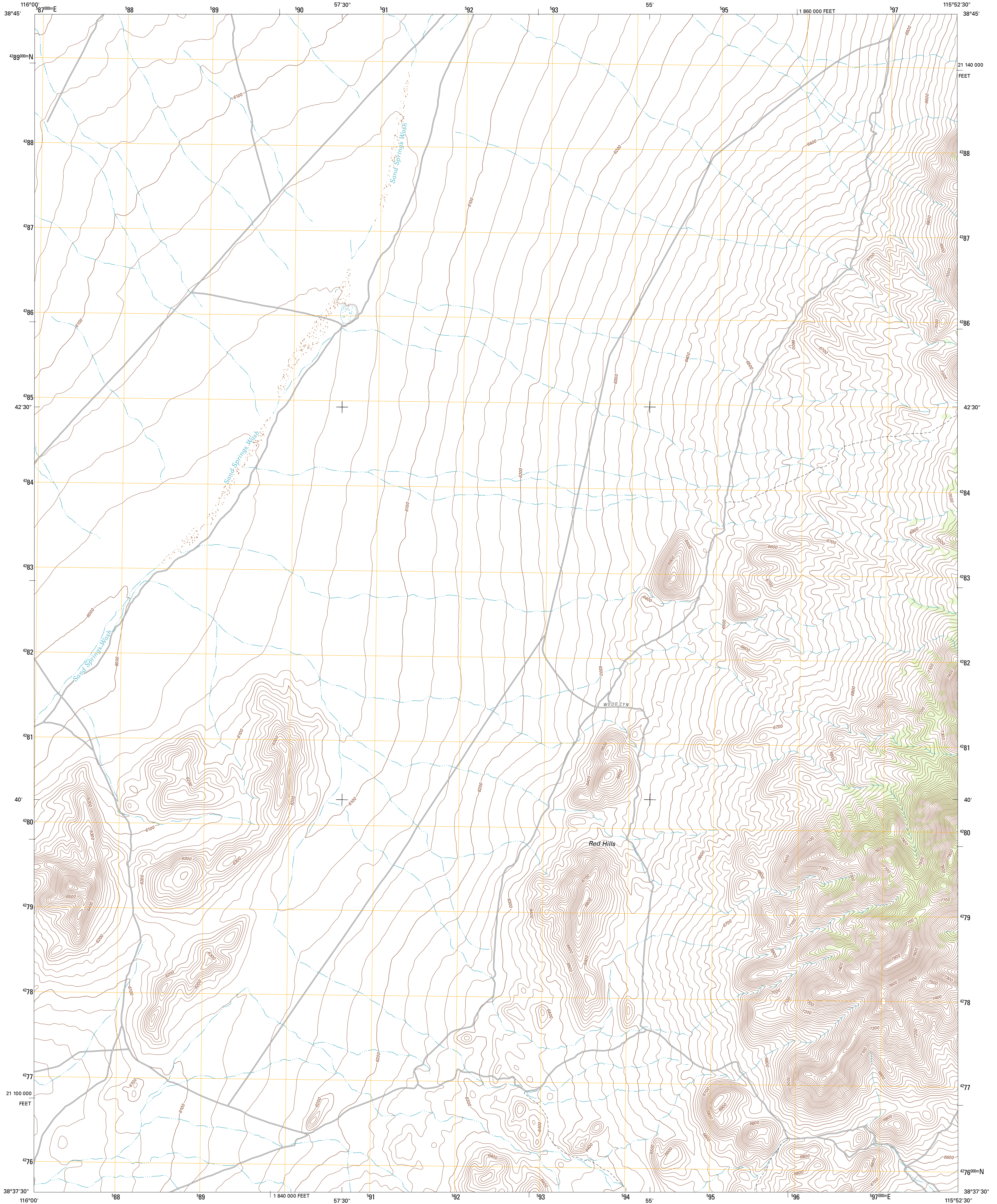




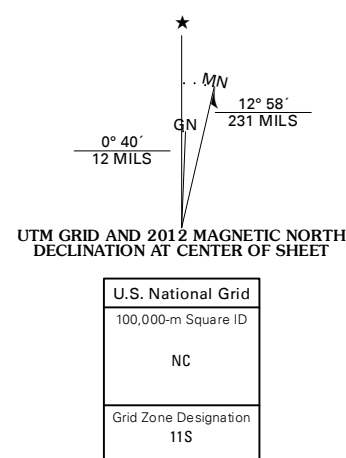
U.S. DEPARTMENT OF THE INTERIOR
U. S. GEOLOGICAL SURVEY



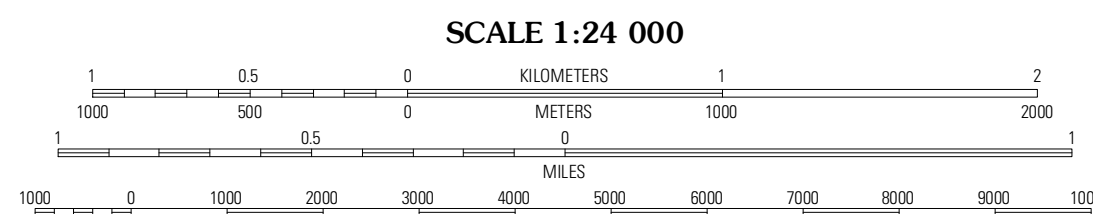
PORTUGUESE MOUNTAIN NW QUADRANGLE
NEVADA-NYE CO.
7.5-MINUTE SERIES



Produced by the United States Geological Survey
North American Datum of 1983 (NAD83)
World Geodetic System of 1984 (WGS84). Projection and
1 000-meter grid: Universal Transverse Mercator, Zone 11S
10 000-foot ticks: Nevada Coordinate System of 1983
(central zone)

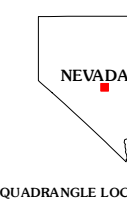


Imagery.....NAIP, June 2010
Roads.....©2006-2011 TomTom
Names.....GNIS, 2011
Hydrography.....National Hydrography Dataset, 2010
Contours.....National Elevation Dataset, 2010
Boundaries.....Census, BWC, IBC, USGS, 1972 - 2010



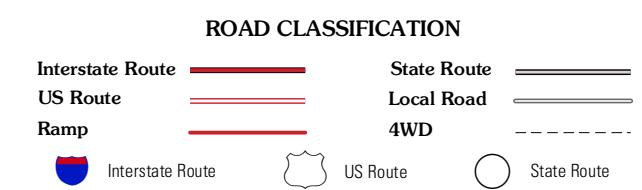
CONTOUR INTERVAL 20 FEET
NORTH AMERICAN VERTICAL DATUM OF 1988

This map was produced to conform with the
National Geospatial Program US Topo Product Standard, 2011.
A metadata file associated with this product is draft version 0.6.1



QUADRANGLE LOCATION

Red Ring Mountain	Brown Summit SW	Sand Spring
Chaos Creek	Portuguese Mountain NW	Portuguese Mountain
Moores Station SE	Black Rock Summit	Lockes



PORTUGUESE MOUNTAIN NW, NV
2012