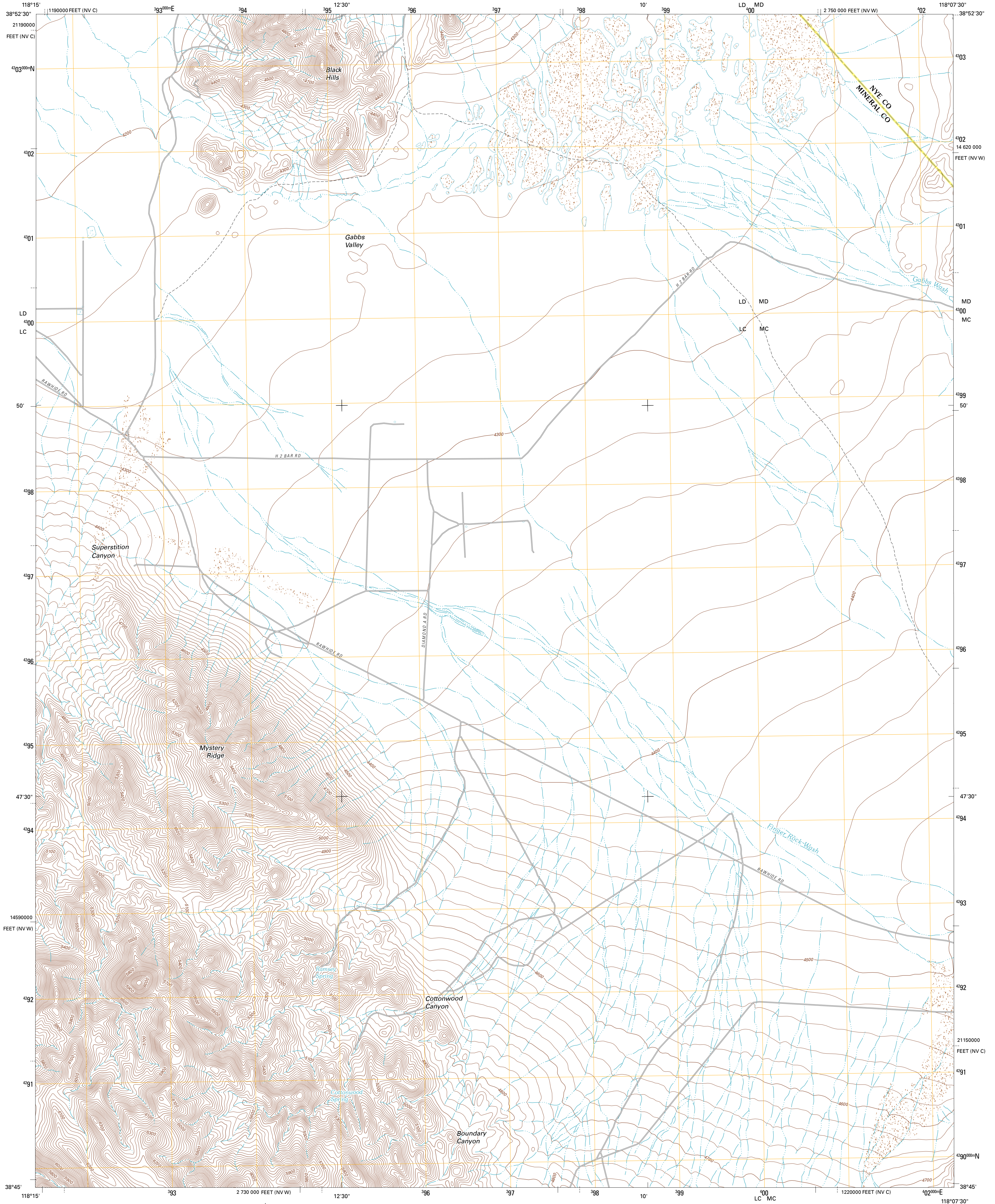




U.S. DEPARTMENT OF THE INTERIOR  
U. S. GEOLOGICAL SURVEY

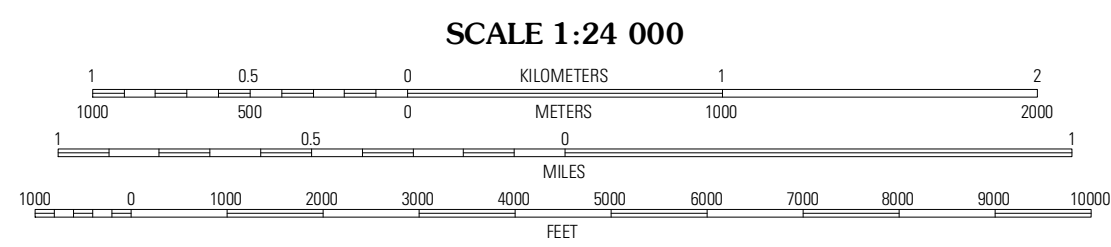
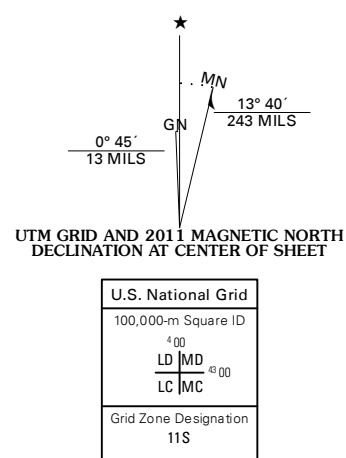


RAMSEY SPRING QUADRANGLE  
NEVADA  
7.5-MINUTE SERIES



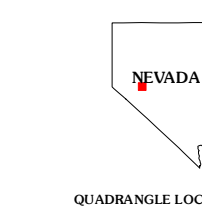
Produced by the United States Geological Survey  
North American Datum of 1983 (NAD83)  
World Geodetic System of 1984 (WGS84), Projection and  
1 000-meter grid: Universal Transverse Mercator, Zone 11S  
10 000-foot ticks: Nevada Coordinate System of 1983 (west  
and central zones)

Imagery:.....NAIP, June 2010  
Roads:.....©2006-2011 TomTom  
Names:.....©2011  
Hydrography:.....National Hydrography Dataset, 2010  
Contours:.....National Elevation Dataset, 2003  
Boundaries:.....Census, IBWC, IBC, USGS, 1972 - 2010



CONTOUR INTERVAL 20 FEET  
NORTH AMERICAN VERTICAL DATUM OF 1988

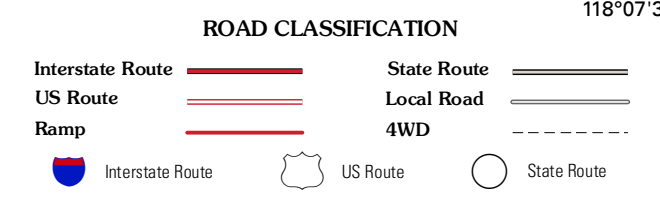
This map was produced to conform with the  
National Geospatial Program US Topo Product Standard, 2011.  
A metadata file associated with this product is draft version 0.6.1



QUADRANGLE LOCATION

Murphys Well	Mount Annie	Mount Annie NE
Poinsettia Spring	Ramsey Spring	Mount Annie SE
Wu Wan Flat	Mount Ferguson	Gabbs Mountain

ADJOINING 7.5' QUADRANGLES



RAMSEY SPRING, NV  
2011