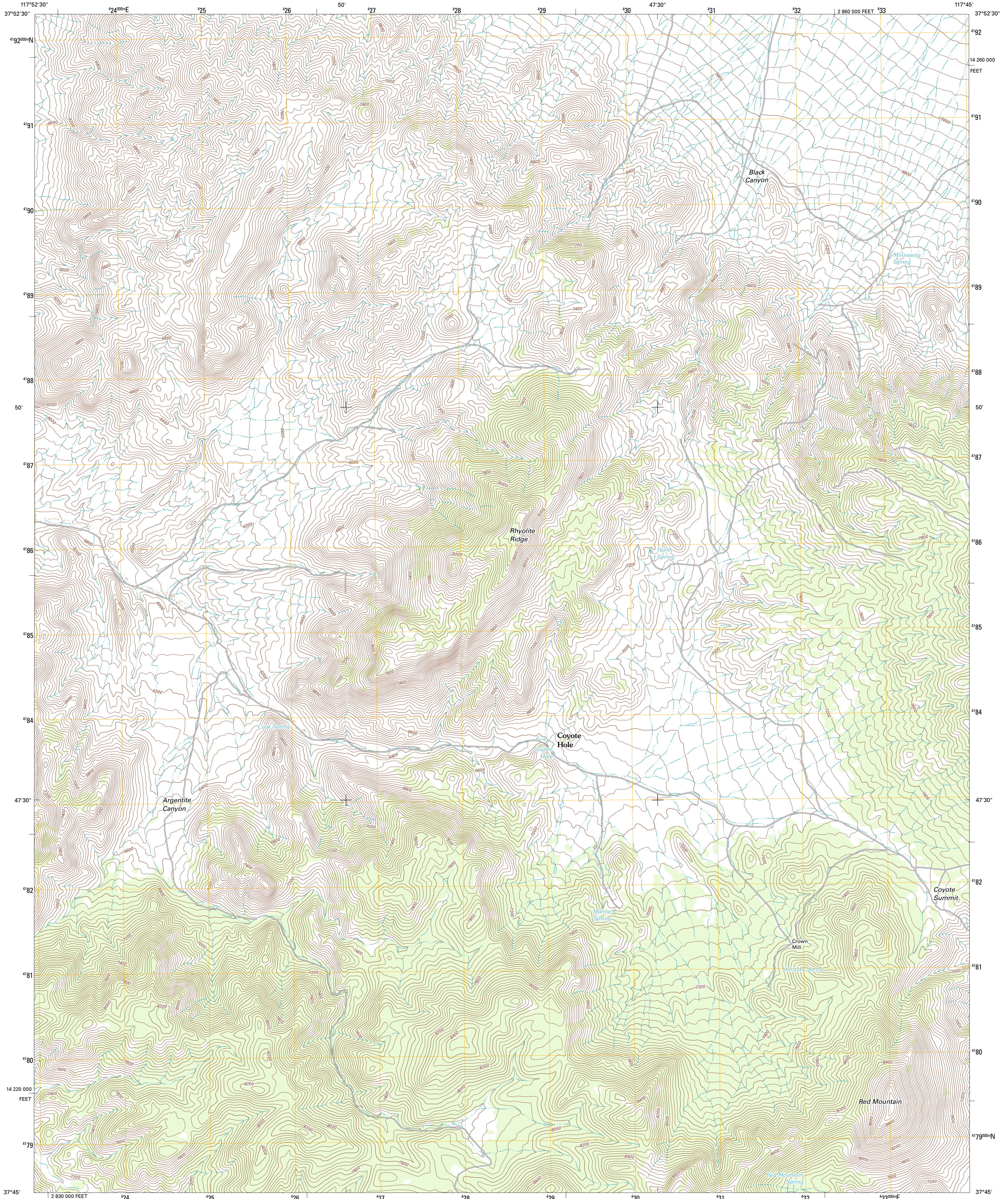




U.S. DEPARTMENT OF THE INTERIOR  
U. S. GEOLOGICAL SURVEY

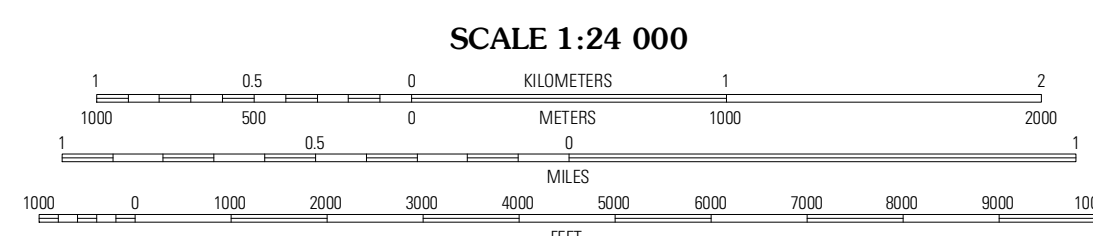
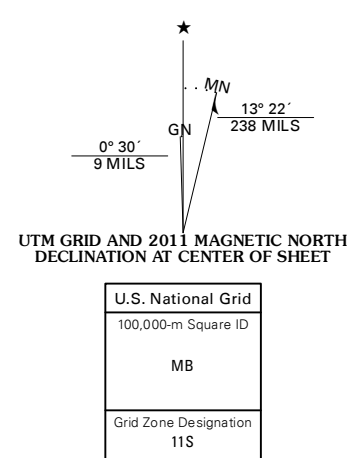


RHYOLITE RIDGE QUADRANGLE  
NEVADA-ESMERALDA CO.  
7.5-MINUTE SERIES



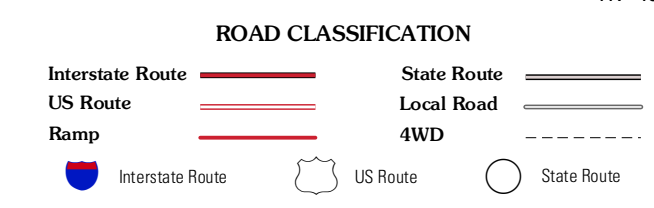
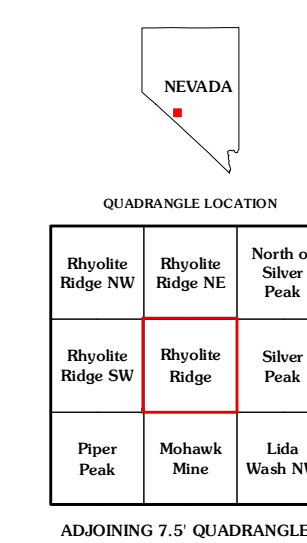
Produced by the United States Geological Survey  
North American Datum of 1983 (NAD83)  
World Geospatial System of 1984 (WGS84). Projection and  
1 000-meter grid: Universal Transverse Mercator, Zone 11S  
10 000-foot ticks: Nevada Coordinate System of 1983 (west  
zone)

Imagery:.....NAP, June 2010  
Roads:.....©2006-2011 TomTom  
Names:.....GNIS, 2011  
Hydrography:.....National Hydrography Dataset, 2010  
Contours:.....National Elevation Dataset, 2003  
Boundaries:.....Census, IBWC, IBC, USGS, 1972 - 2010



CONTOUR INTERVAL 40 FEET  
NORTH AMERICAN VERTICAL DATUM OF 1988

This map was produced to conform with the  
National Geospatial Program US Topo Product Standard, 2011.  
A metadata file associated with this product is draft version 0.6.1



RHYOLITE RIDGE, NV  
2011