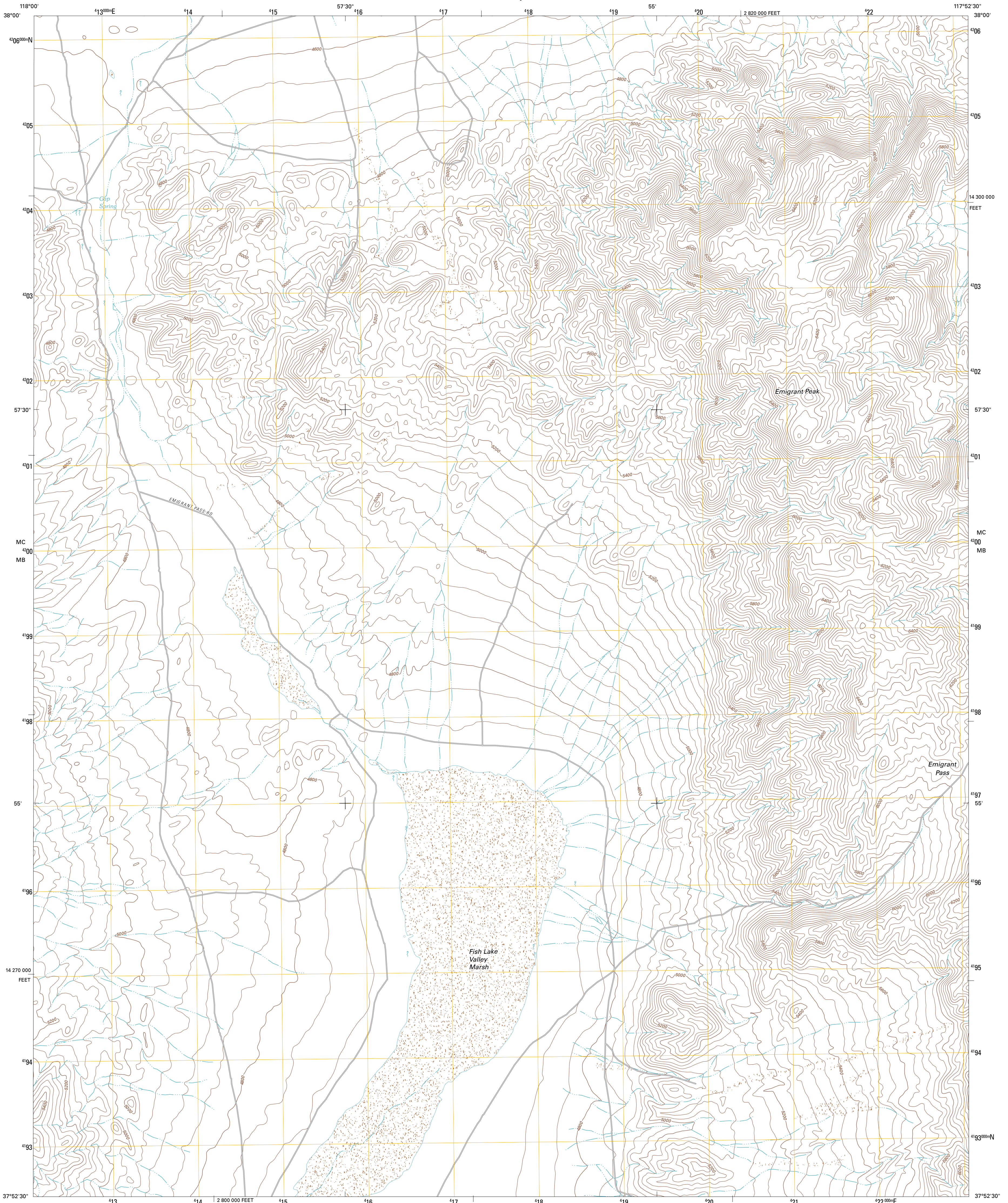




U.S. DEPARTMENT OF THE INTERIOR
U. S. GEOLOGICAL SURVEY

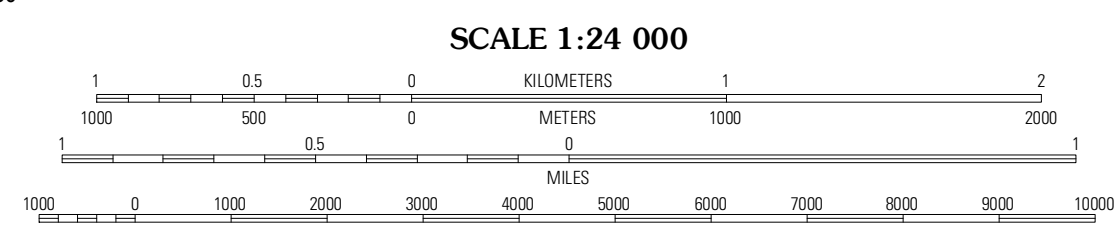
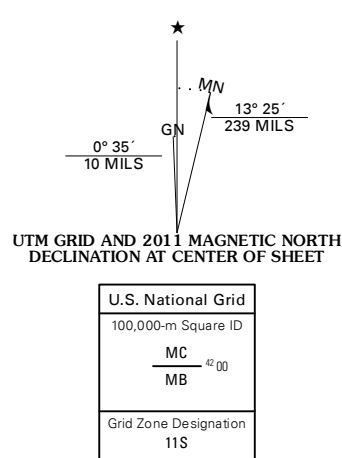


RHYOLITE RIDGE NW QUADRANGLE
NEVADA-ESMERALDA CO.
7.5-MINUTE SERIES



Produced by the United States Geological Survey
North American Datum of 1983 (NAD83)
World Geodetic System of 1984 (WGS84). Projection and
1 000-foot ticks: Nevada Coordinate System of 1983 (west
zone)

Imagery:.....NAIP, May 2010 - June 2010
Roads:.....©2006-2011 TomTom
Names:.....©2006-2011 GNSI, 2011
Hydrography:.....National Hydrography Dataset, 2010
Contours:.....National Elevation Dataset, 2003
Boundaries:.....Census, IBWC, IBC, USGS, 1972 - 2010



CONTOUR INTERVAL 40 FEET
NORTH AMERICAN VERTICAL DATUM OF 1988

This map was produced to conform with the
National Geospatial Program US Topo Product Standard, 2011.
A metadata file associated with this product is draft version 0.6.1

NEVADA

ROAD CLASSIFICATION

Interstate Route State Route

US Route Local Road

Ramp 4WD

Interstate Route US Route State Route

QUADRANGLE LOCATION

Columbus	Coaldale	Blair Junction
Volcanic Hills East	Rhyolite Ridge NW	Rhyolite Ridge NE
East of Davis Mountain	Rhyolite Ridge SW	Rhyolite Ridge

ADJOINING 7.5 QUADRANGLES

RHYOLITE RIDGE NW, NV
2011