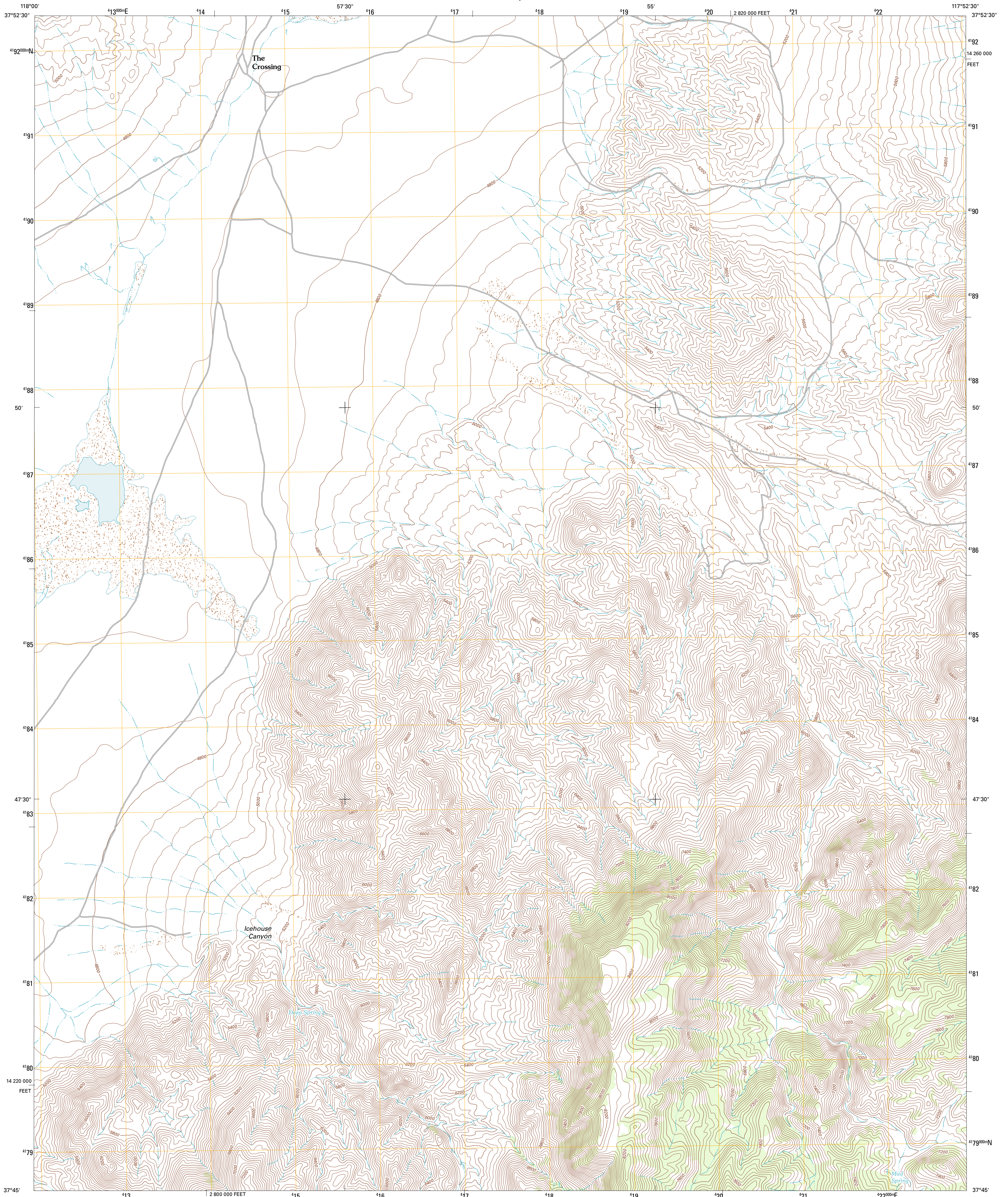




U.S. DEPARTMENT OF THE INTERIOR
U. S. GEOLOGICAL SURVEY

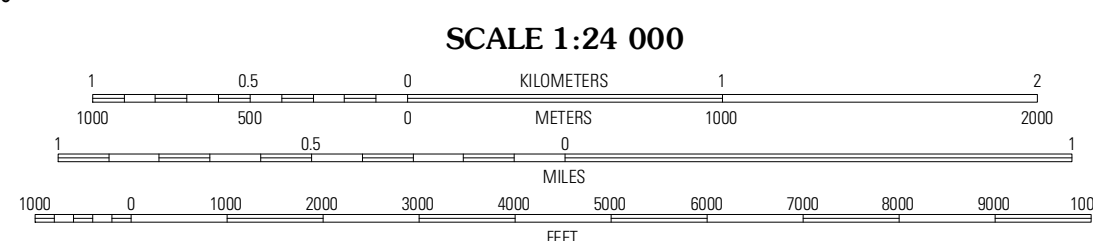
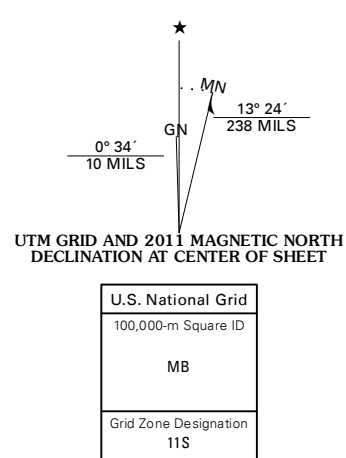


RHYOLITE RIDGE SW QUADRANGLE
NEVADA-ESMERALDA CO.
7.5-MINUTE SERIES



Produced by the United States Geological Survey
North American Datum of 1983 (NAD83)
World Geospatial System of 1984 (WGS84). Projection and
1 000-meter grid: Universal Transverse Mercator, Zone 11S
10 000-foot ticks: Nevada Coordinate System of 1983 (west
zone)

Imagery: N.A.P., June 2010
Roads: ©2006-2011 TomTom
Names: GNS, 2011
Hydrography: National Hydrography Dataset, 2010
Contours: National Elevation Dataset, 2003
Boundaries: Census, IBWC, IBC, USGS, 1972 - 2010



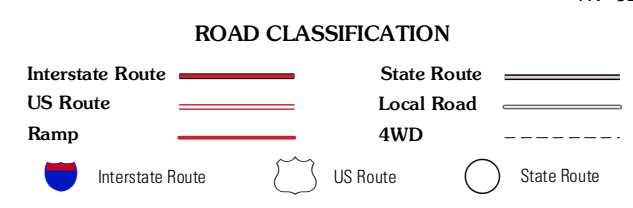
CONTOUR INTERVAL 40 FEET
NORTH AMERICAN VERTICAL DATUM OF 1988

This map was produced to conform with the
National Geospatial Program US Topo Product Standard, 2011.
A metadata file associated with this product is draft version 0.6.1



QUADRANGLE LOCATION

Volcanic Hills East	Rhyolite Ridge NW	Rhyolite Ridge NE
East of Davis Mountain	Rhyolite Ridge SW	Rhyolite Ridge
Dyer	Piper Peak	Mohawk Mine



RHYOLITE RIDGE SW, NV
2011

ADJOINING 7.5 QUADRANGLES