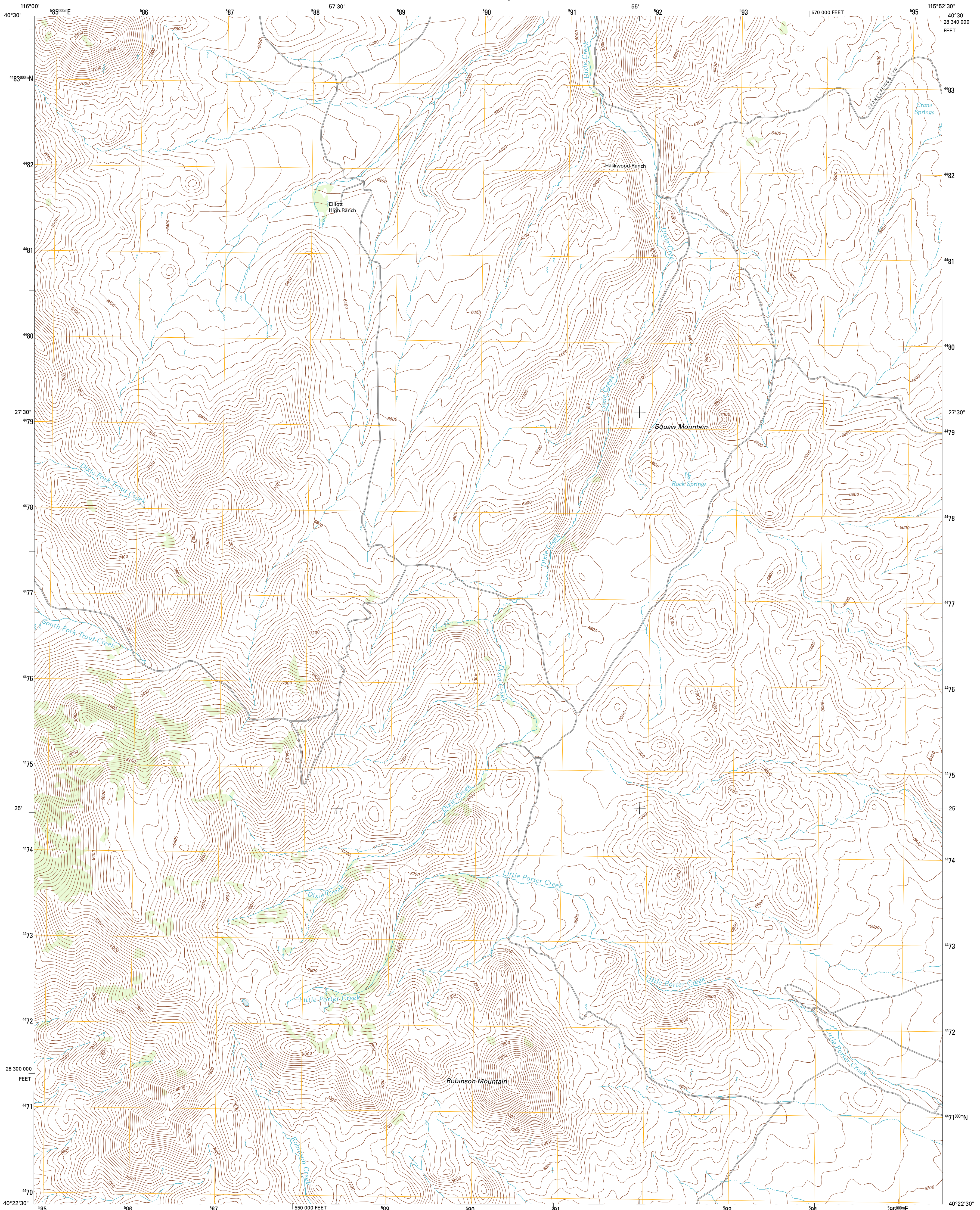




U.S. DEPARTMENT OF THE INTERIOR  
U. S. GEOLOGICAL SURVEY

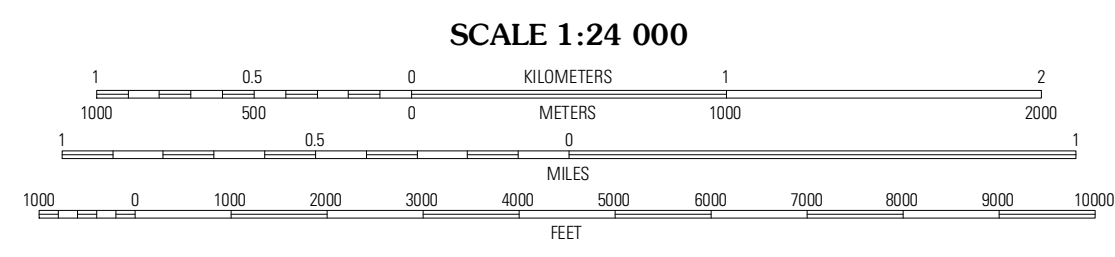
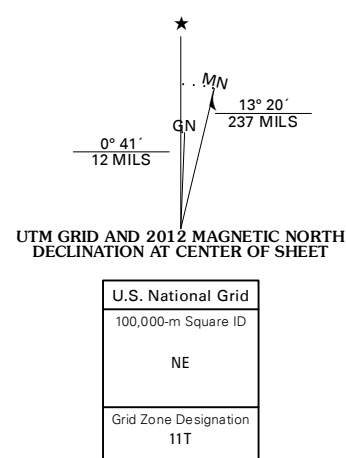


ROBINSON MOUNTAIN QUADRANGLE  
NEVADA-ELKO CO.  
7.5-MINUTE SERIES



Produced by the United States Geological Survey  
North American Datum of 1983 (NAD83)  
World Geodetic System of 1984 (WGS84). Projection and  
1 000-meter grid: Universal Transverse Mercator, Zone 11T  
10 000-foot ticks: Nevada Coordinate System of 1983 (east zone)

Imagery: N.A.P., June 2010  
Roads: ©2006-2011 TomTom  
Names: G.N.S., 2011  
Hydrography: National Hydrography Dataset, 2010  
Contours: National Elevation Dataset, 1999  
Boundaries: Census, IBWC, IBC, USGS, 1972 - 2010



CONTOUR INTERVAL 40 FEET  
NORTH AMERICAN VERTICAL DATUM OF 1988

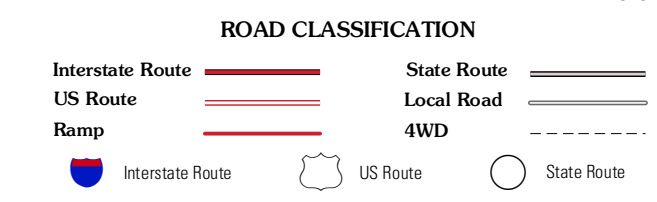
This map was produced to conform with the  
National Geospatial Program US Topo Product Standard, 2011.  
A metadata file associated with this product is draft version 0.6.1



QUADRANGLE LOCATION

Ravens Nest	Bullock	Red Spring
Popoese Canyon	Robinson Mountain	Cedar Ridge
Coffin Mountain	Bailey Mountain	East of Bailey Mountain

ADJOINING 7.5' QUADRANGLES



ROBINSON MOUNTAIN, NV  
2012