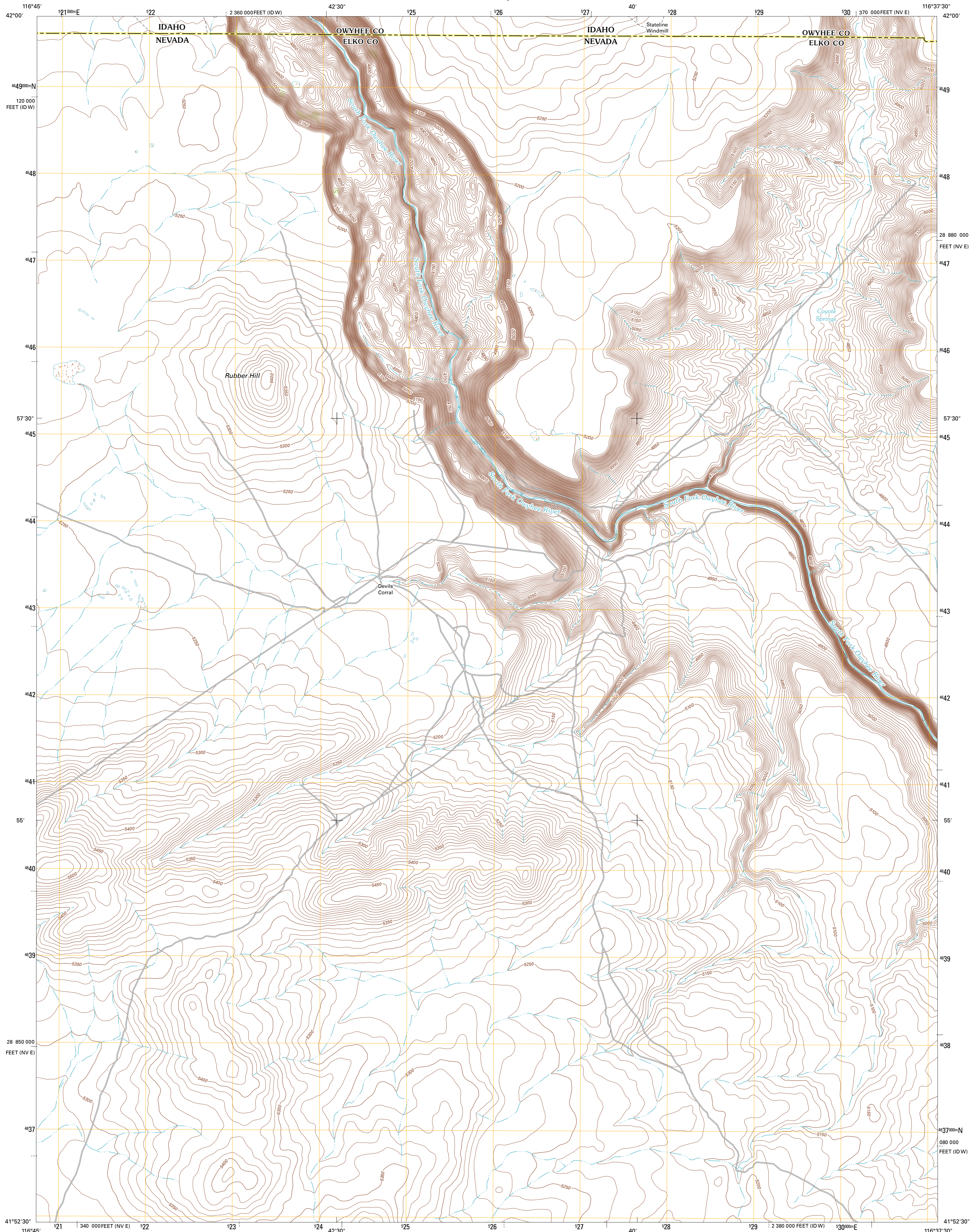




U.S. DEPARTMENT OF THE INTERIOR
U. S. GEOLOGICAL SURVEY

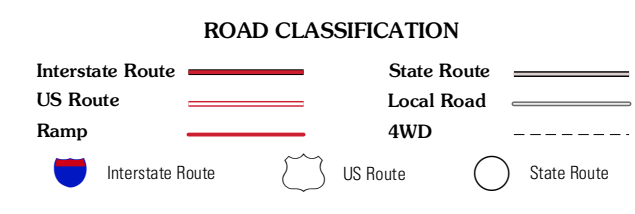
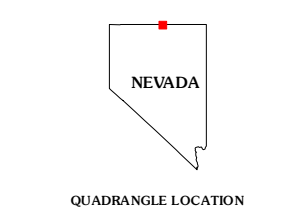
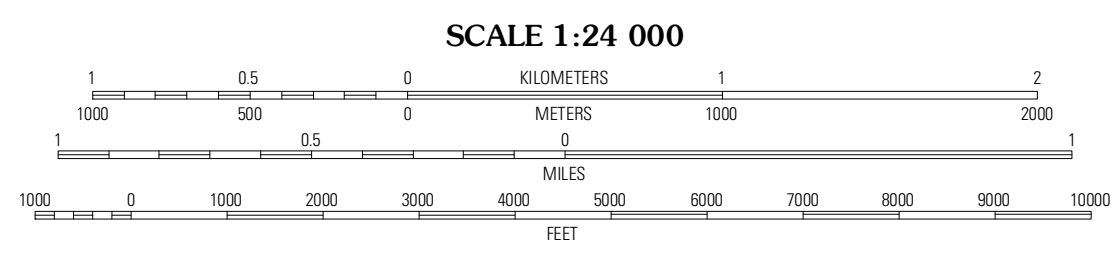
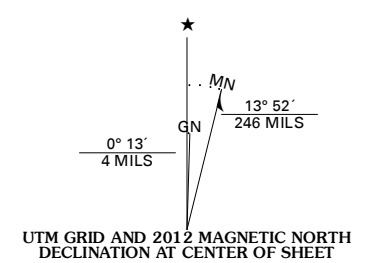


RUBBER HILL QUADRANGLE
NEVADA-IDAHO
7.5-MINUTE SERIES



Produced by the United States Geological Survey
North American Datum of 1983 (NAD83)
World Geodetic System of 1984 (WGS84). Projection and
1 000-meter grid: Universal Transverse Mercator, Zone 11T
10 000-foot ticks: Nevada Coordinate System of 1983 (east
zone), Idaho Coordinate System of 1983 (west zone)

Imagery.....N.A.I.P., July 2010
Roads.....©2006-2011 TomTom
Names.....G.N.S., 2011
Hydrography.....National Hydrography Dataset, 2010
Contours.....National Elevation Dataset, 2002
Boundaries.....Census, IBWC, IBC, USGS, 1972 - 2010



Coopie Hole	Bull Camp Butte	Four Corners
Star Valley Ridge East	Rubber Hill	State Law Camp
Star Valley Ridge SE	Twelvemile Flat	Peterson Table West

RUBBER HILL, NV-ID
2012

CONTOUR INTERVAL 10 FEET
NORTH AMERICAN VERTICAL DATUM OF 1988

This map was produced to conform with the
National Geospatial Program US Topo Product Standard, 2011.
A metadata file associated with this product is draft version 0.6.1