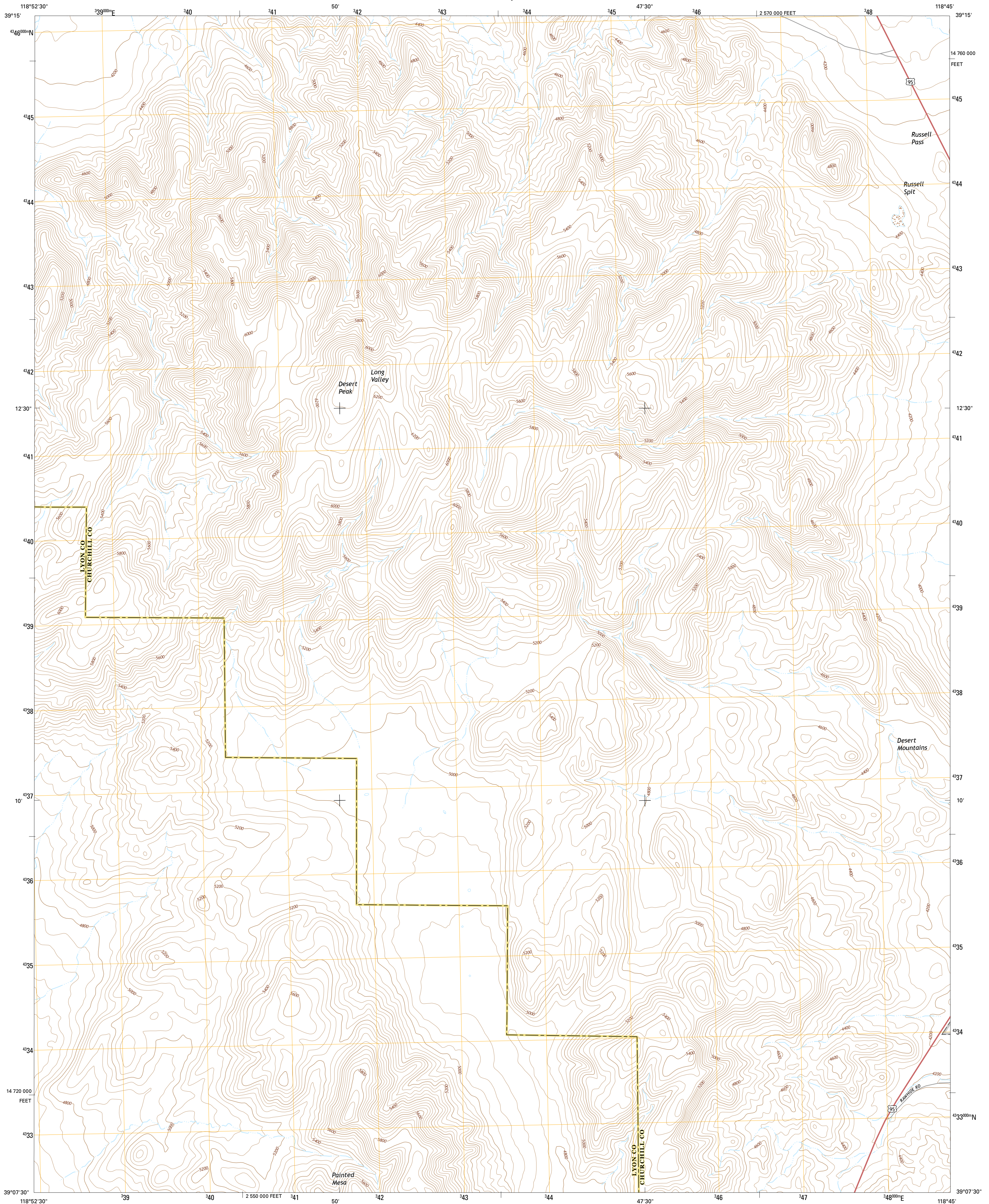




U.S. DEPARTMENT OF THE INTERIOR
U.S. GEOLOGICAL SURVEY



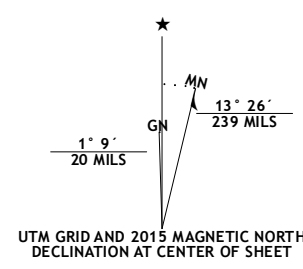
RUSSELL SPIT QUADRANGLE
NEVADA
7.5-MINUTE SERIES



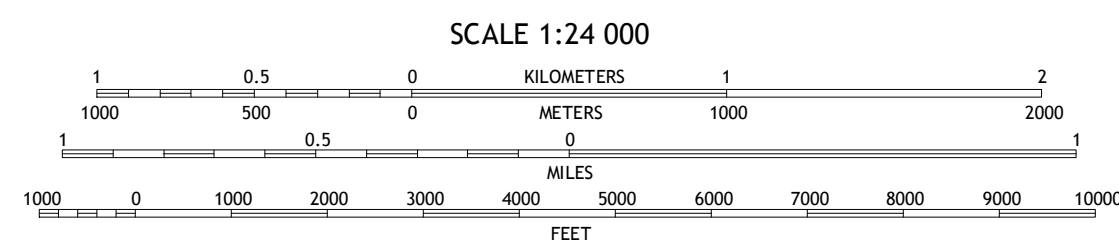
Produced by the United States Geological Survey
North American Datum of 1983 (NAD83)
World Geodetic System of 1984 (WGS84), Projection and
1 000-meter grid; Universal Transverse Mercator, Zone 11S
10 000-foot ticks; Nevada Coordinate System of 1983 (west
zone)

This map is not a legal document. Boundaries may be
generalized for this map scale. Private lands within government
reservations may not be shown. Obtain permission before
entering private lands.

Imagery.....NAIP, July 2013
Roads.....HERE, ©2013
Names.....GNIS, 2013
Hydrography.....National Hydrography Dataset, 2013
Contours.....National Elevation Dataset, 2001
Boundaries.....Multiple sources; see metadata file 1972 - 2014
Public Land Survey System.....BLM, 2011



U.S. National Grid
100,000 m Square ID
LD
Grid Zone Designation
11S



SCALE 1:24 000

CONTOUR INTERVAL 40 FEET
NORTH AMERICAN VERTICAL DATUM OF 1988

This map was produced to conform with the
National Geospatial Program US Topo Product Standard, 2011.
A metadata file associated with this product is draft version 0.6.18



QUADRANGLE LOCATION

ROAD CLASSIFICATION
Expressway ——— Local Connector ———
Secondary Hwy ——— Local Road ———
Ramp ——— 4WD ———
Interstate Route ——— US Route ———
State Route ———

1	2	3
4	5	6
7	8	

ADJOINING QUADRANGLES

- 1 Salt Cave
- 2 South of Fallon
- 3 Carson Lake
- 4 Wild Horse Basin
- 5 Allen Springs
- 6 Weber Reservoir
- 7 Weber Dam
- 8 Terrill Mountains

RUSSELL SPIT, NV
2015



NSN 7540-01-104-9997
NSA REF. NO. U.S.G.S.X.2.4.K.K.89.9