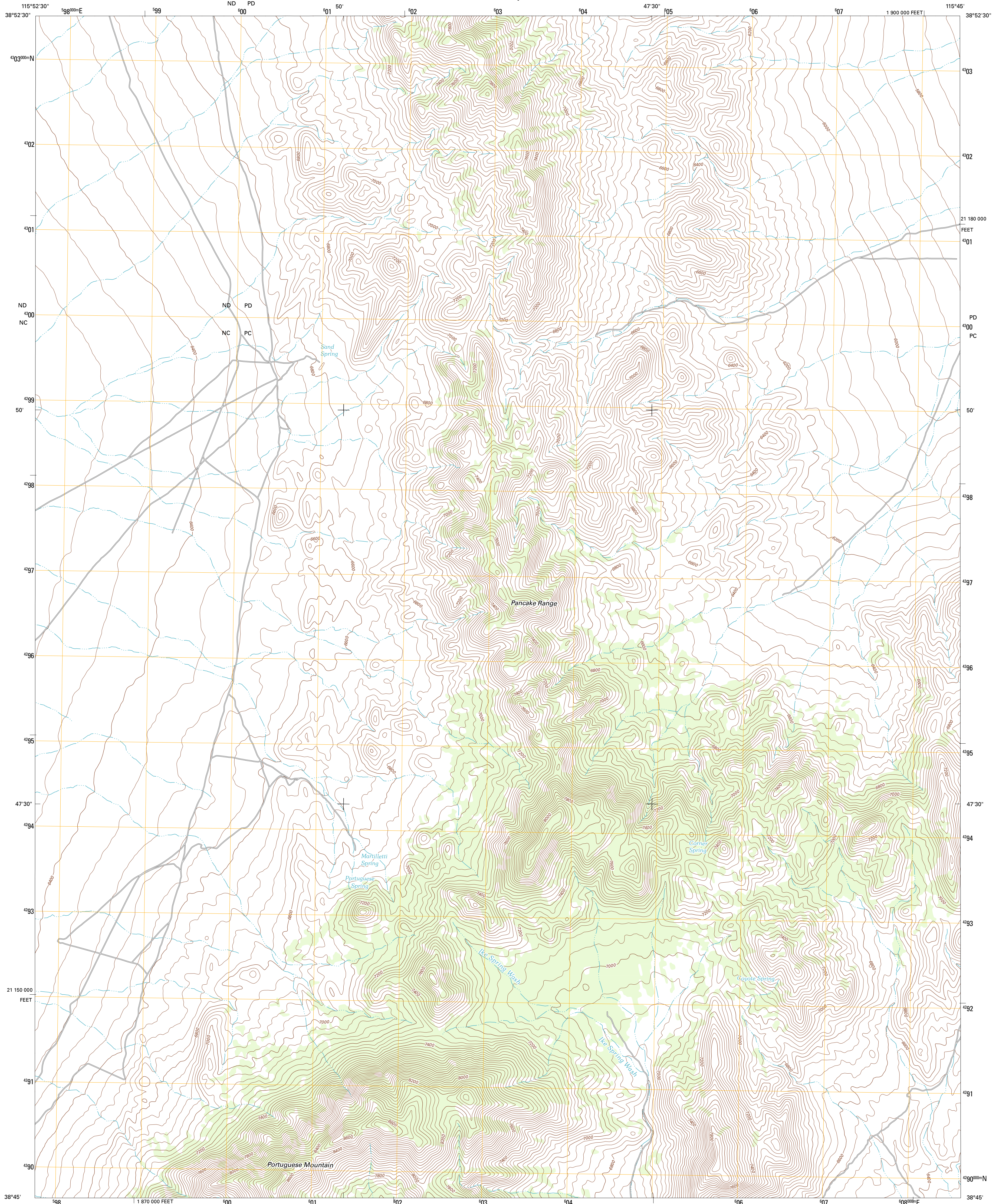




U.S. DEPARTMENT OF THE INTERIOR
U. S. GEOLOGICAL SURVEY

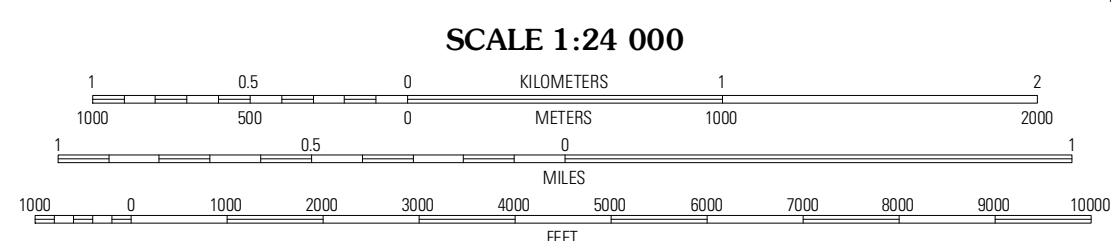
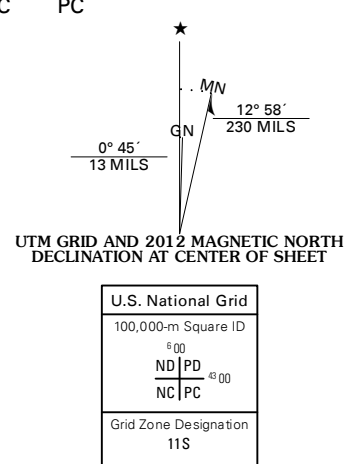


SAND SPRING QUADRANGLE
NEVADA-NYE CO.
7.5-MINUTE SERIES



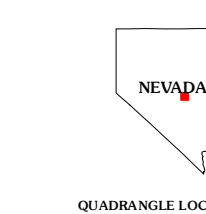
Produced by the United States Geological Survey
North American Datum of 1983 (NAD83)
World Geodetic System of 1984 (WGS84), Projection and
1 000-meter grid: Universal Transverse Mercator, Zone 11S
10 000-foot ticks: Nevada Coordinate System of 1983
(central zone)

Imagery.....NAIP, June 2010
Roads.....©2006-2011 TomTom
Names.....©2011 GNS
Hydrography.....National Hydrography Dataset, 2010
Contours.....National Elevation Dataset, 2001
Boundaries.....Census, IBWC, IBC, USGS, 1972 - 2010



CONTOUR INTERVAL 40 FEET
NORTH AMERICAN VERTICAL DATUM OF 1988

This map was produced to conform with the
National Geospatial Program US Topo Product Standard, 2011.
A metadata file associated with this product is draft version 0.6.1



QUADRANGLE LOCATION

Brown Summit NW	Brown Summit	Duckwater
Brown Summit SW	Sand Spring	Bradshaw Spring
Portuguese Mountain NW	Portuguese Mountain	Meteorite Crater

ROAD CLASSIFICATION

Interstate Route	State Route
US Route	Local Road
Ramp	4WD

SAND SPRING, NV
2012

ADJOINING 7.5' QUADRANGLES