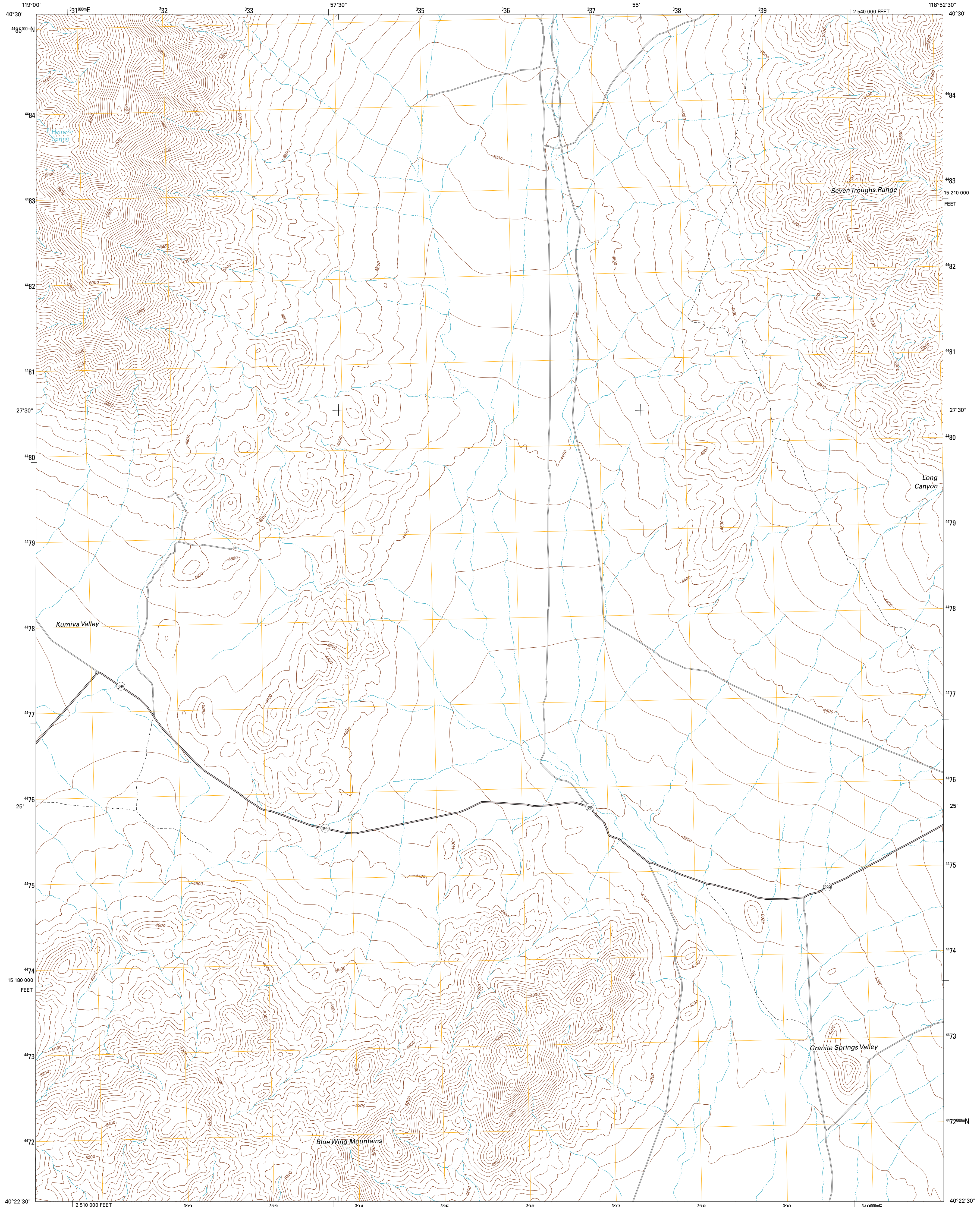




U.S. DEPARTMENT OF THE INTERIOR
U. S. GEOLOGICAL SURVEY

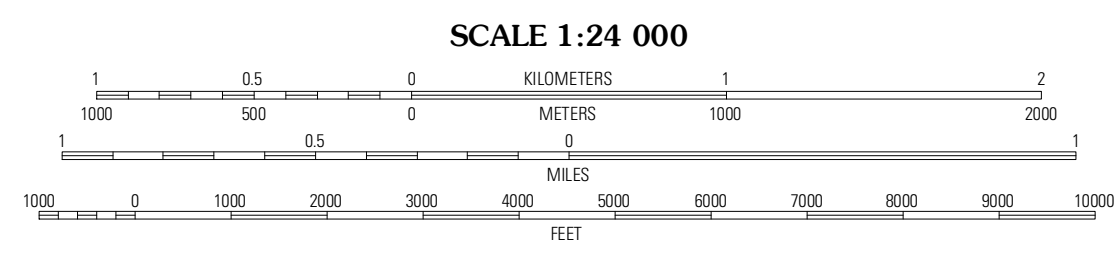
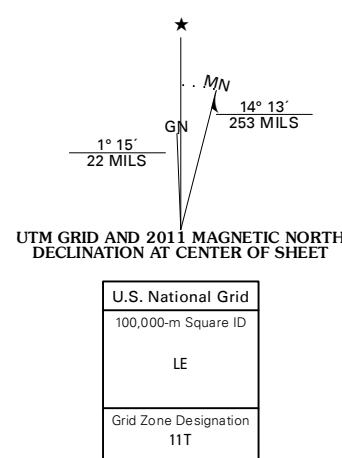


SEVEN TROUGHS NW QUADRANGLE
NEVADA-PERSHING CO.
7.5-MINUTE SERIES



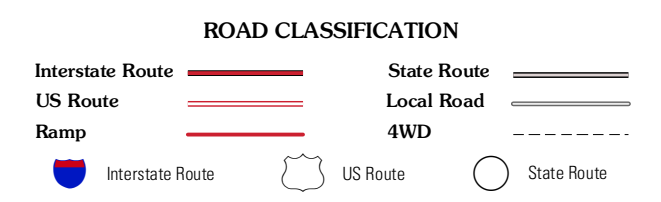
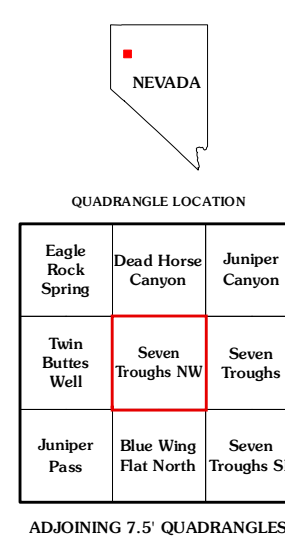
Produced by the United States Geological Survey
North American Datum of 1983 (NAD83)
World Geodetic System of 1984 (WGS84). Projection and
1 000-meter grid: Universal Transverse Mercator, Zone 11T
10 000-foot ticks: Nevada Coordinate System of 1983 (west
zone)

Imagery:.....N.A.P., June 2010
Roads:.....©2006-2011 TomTom
Names:.....GNS, 2011
Hydrography:.....National Elevation Dataset, 2010
Contours:.....National Elevation Dataset, 2004
Boundaries:.....Census, IBWC, IBC, USGS, 1972 - 2010



CONTOUR INTERVAL 40 FEET
NORTH AMERICAN VERTICAL DATUM OF 1988

This map was produced to conform with the
National Geospatial Program US Topo Product Standard, 2011.
A metadata file associated with this product is draft version 0.6.1



SEVEN TROUGHS NW, NV
2011

ADJOINING 7.5' QUADRANGLES		
Eagle Rock Spring	Dead Horse Canyon	Juniper Canyon
Twin Plateau Well	Seven Troughs NW	Seven Troughs
Juniper Pass	Blue Wing Flat North	Seven Troughs SE