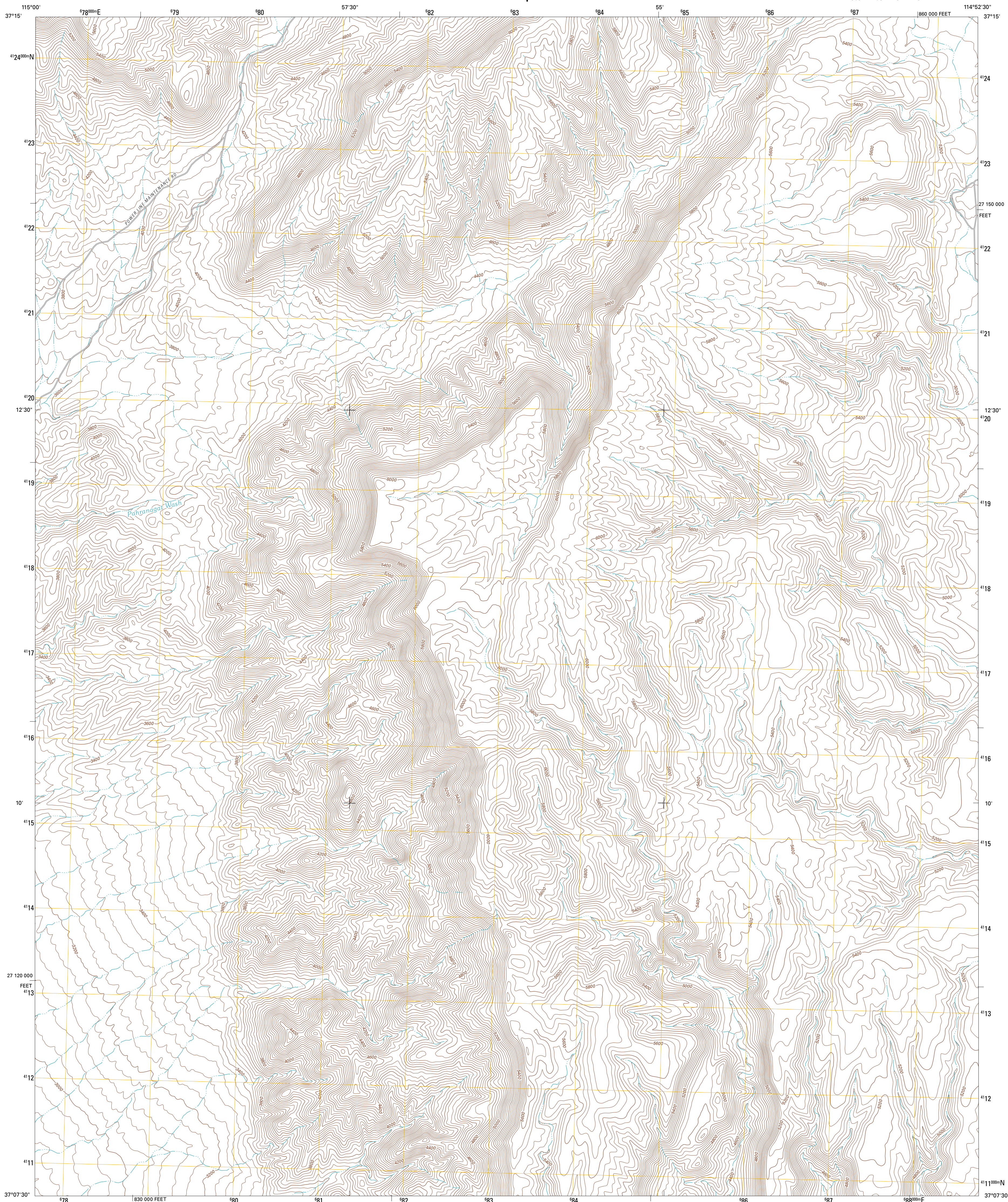




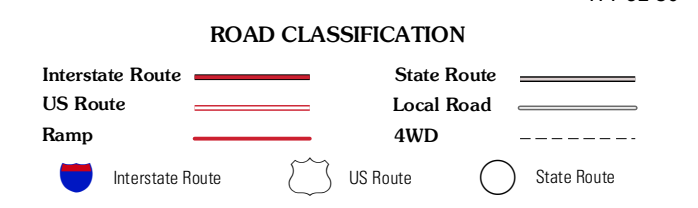
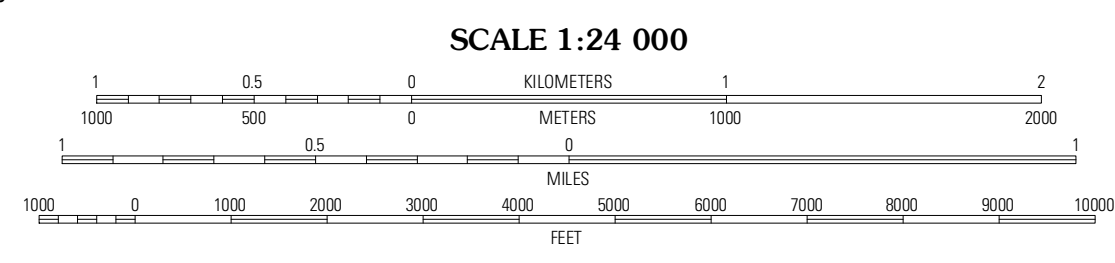
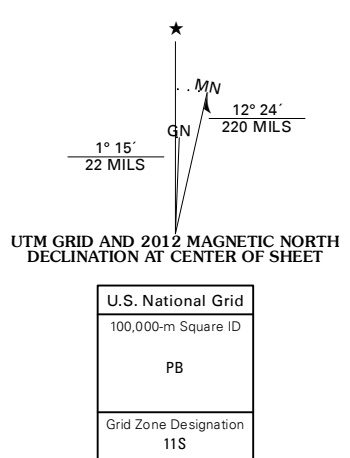
U.S. DEPARTMENT OF THE INTERIOR
U. S. GEOLOGICAL SURVEY



SOUTH OF DELAMAR LAKE QUADRANGLE
NEVADA-LINCOLN CO.
7.5-MINUTE SERIES



Produced by the United States Geological Survey
North American Datum of 1983 (NAD83)
World Geodetic System of 1984 (WGS84). Projection and
1 000-meter grid: Universal Transverse Mercator, Zone 11S
10 000-foot ticks: Nevada Coordinate System of 1983 (east
zone)



QUADRANGLE LOCATION

Alamo SE	Delamar Lake	Gegerson Basin
Lower Pahranaga Lake	South of Delamar Lake	South of Gegerson Basin
Lower Pahranaga Lake SE	Pahranaga Wash	Kane Springs Valley

CONTOUR INTERVAL 40 FEET
NORTH AMERICAN VERTICAL DATUM OF 1988

This map was produced to conform with the
National Geospatial Program US Topo Product Standard, 2011.
A metadata file associated with this product is draft version 0.6.1

SOUTH OF DELAMAR LAKE, NV
2012

ADJOINING 7.5 QUADRANGLES