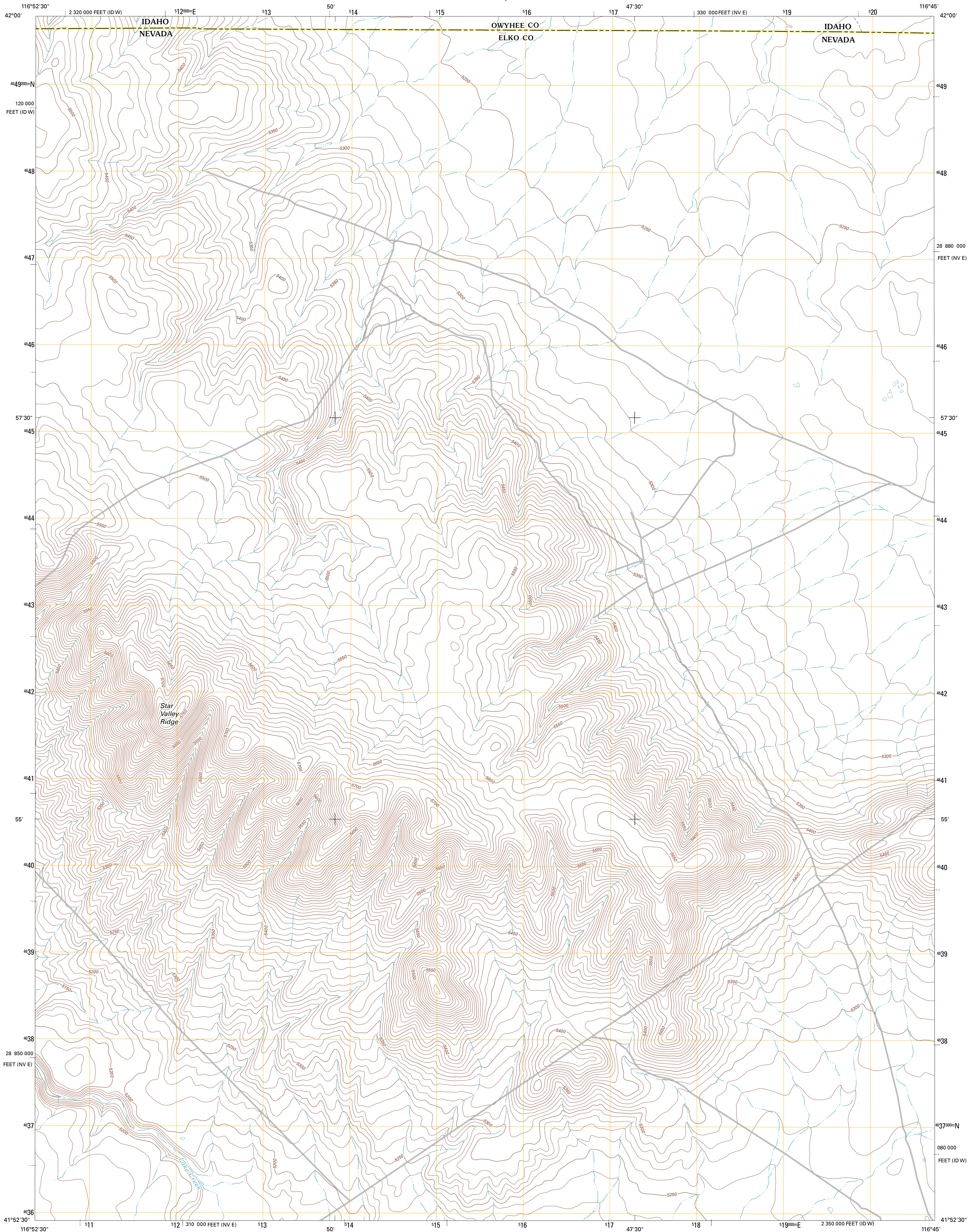




U.S. DEPARTMENT OF THE INTERIOR  
U. S. GEOLOGICAL SURVEY

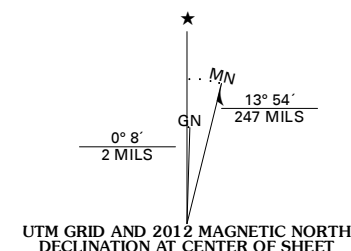


STAR VALLEY RIDGE EAST QUADRANGLE  
NEVADA-IDAHO  
7.5-MINUTE SERIES

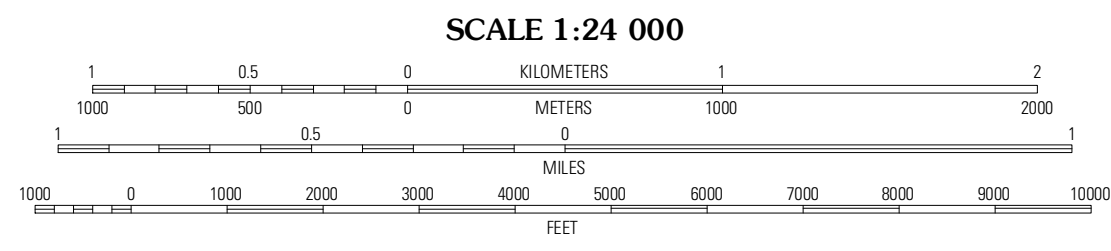


Produced by the United States Geological Survey  
North American Datum of 1983 (NAD83)  
World Geodetic System of 1984 (WGS84). Projection and  
1 000-meter grid: Universal Transverse Mercator, Zone 11T  
10 000-foot ticks: Nevada Coordinate System of 1983 (east  
zone), Idaho Coordinate System of 1983 (west zone)

Imagery.....NAIP, July 2010  
Roads.....©2006-2011 TomTom  
Names.....GNS, 2011  
Hydrography.....National Hydrography Dataset, 2010  
Contours.....National Elevation Dataset, 2002  
Boundaries.....Census, IBWC, IBC, USGS, 1972 - 2010



UTM GRID AND 2012 MAGNETIC NORTH DECLINATION AT CENTER OF SHEET
U.S. National Grid
100 000-ft Square ID
96
Grid Zone Designation
11T



CONTOUR INTERVAL 10 FEET  
NORTH AMERICAN VERTICAL DATUM OF 1988  
This map was produced to conform with the  
National Geospatial Program US Topo Product Standard, 2011.  
A metadata file associated with this product is draft version 0.6.1



Star Valley	Coyote Hole	Bull Camp Butte
Star Valley Ridge West	Star Valley Ridge East	Rubber Hill
Star Valley Ridge SW	Star Valley Ridge SE	Twelvemile Flat

ADJOINING 7.5' QUADRANGLES

ROAD CLASSIFICATION	
Interstate Route	State Route
US Route	Local Road
Ramp	4WD
Interstate Route	US Route
	State Route

STAR VALLEY RIDGE EAST, NV-ID  
2012