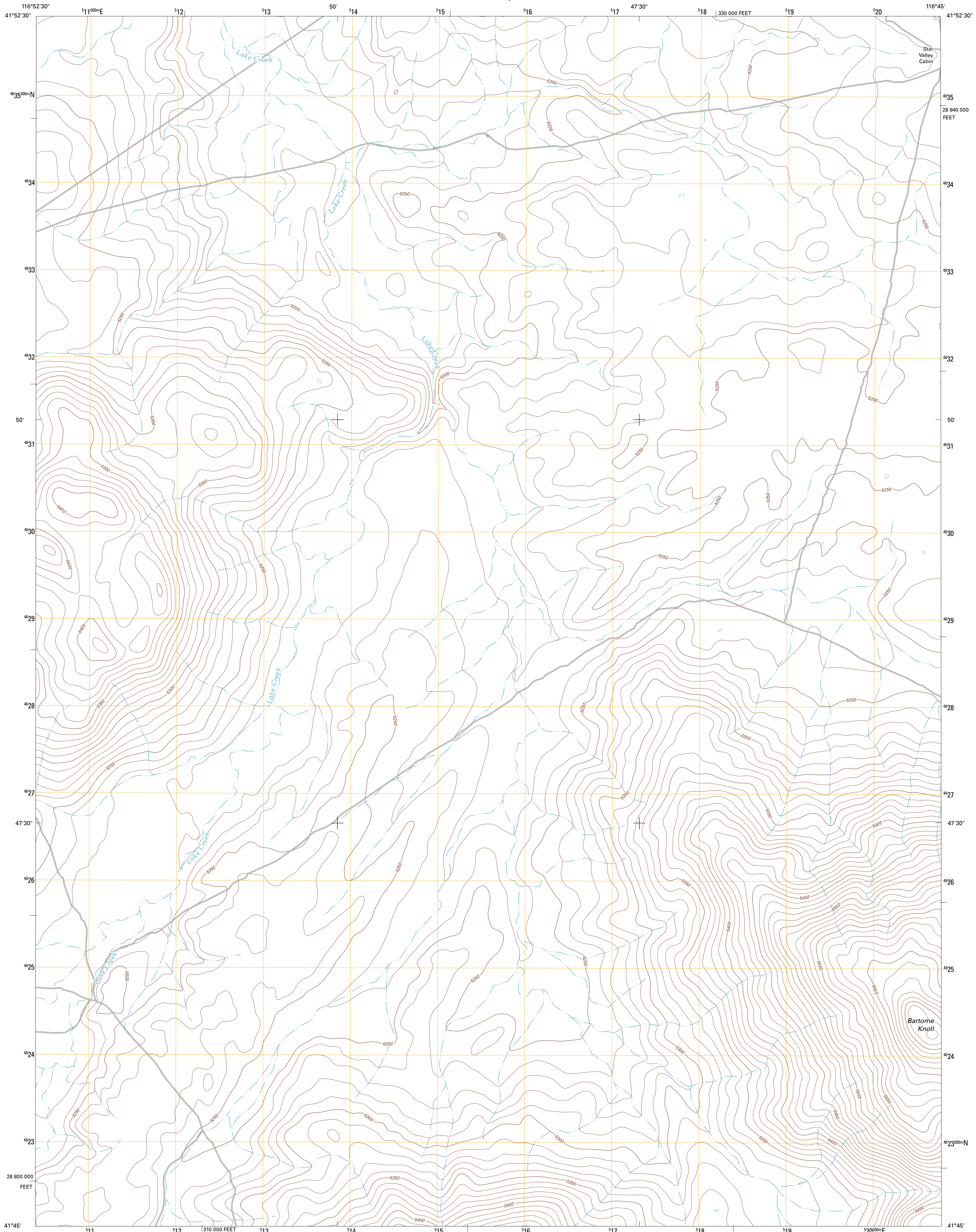




U.S. DEPARTMENT OF THE INTERIOR
U. S. GEOLOGICAL SURVEY

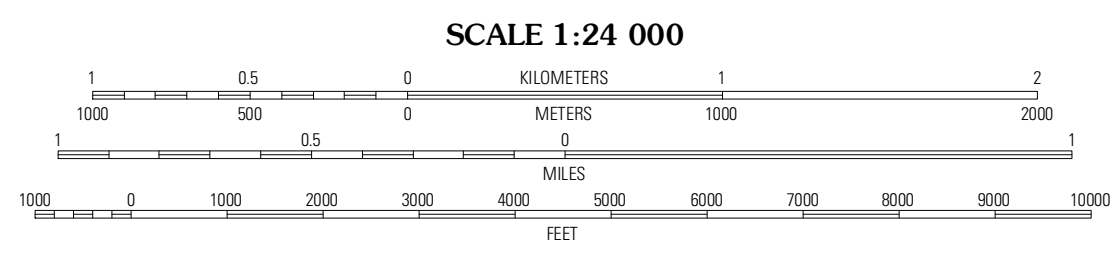
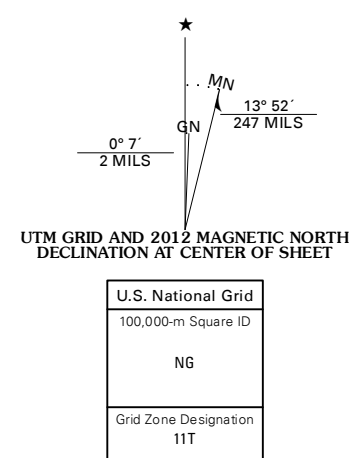


STAR VALLEY RIDGE SE QUADRANGLE
NEVADA-ELKO CO.
7.5-MINUTE SERIES

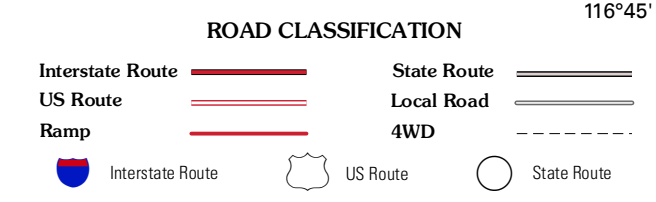


Produced by the United States Geological Survey
North American Datum of 1983 (NAD83)
World Geodetic System of 1984 (WGS84). Projection and
1 000-meter grid: Universal Transverse Mercator, Zone 11T
10 000-foot ticks: Nevada Coordinate System of 1983 (east
zone)

Imagery.....N.A.I.P., July 2010
Roads.....©2006-2011, TomTom
Names.....©2006-2011, TomTom
Hydrography.....National Hydrography Dataset, 2010
Contours.....National Elevation Dataset, 2002
Boundaries.....Census, IBWC, IBC, USGS, 1972 - 2010



SCALE 1:24 000
CONTOUR INTERVAL 10 FEET
NORTH AMERICAN VERTICAL DATUM OF 1988
This map was produced to conform with the
National Geospatial Program US Topo Product Standard, 2011.
A metadata file associated with this product is draft version 0.6.1



QUADRANGLE LOCATION

Star Valley Ridge West	Star Valley Ridge East	Robber Hill
Star Valley Ridge SW	Star Valley Ridge SE	Twelvemile Flat
Bottom Lake Well	Corral Lake	Silver Lake

STAR VALLEY RIDGE SE, NV
2012